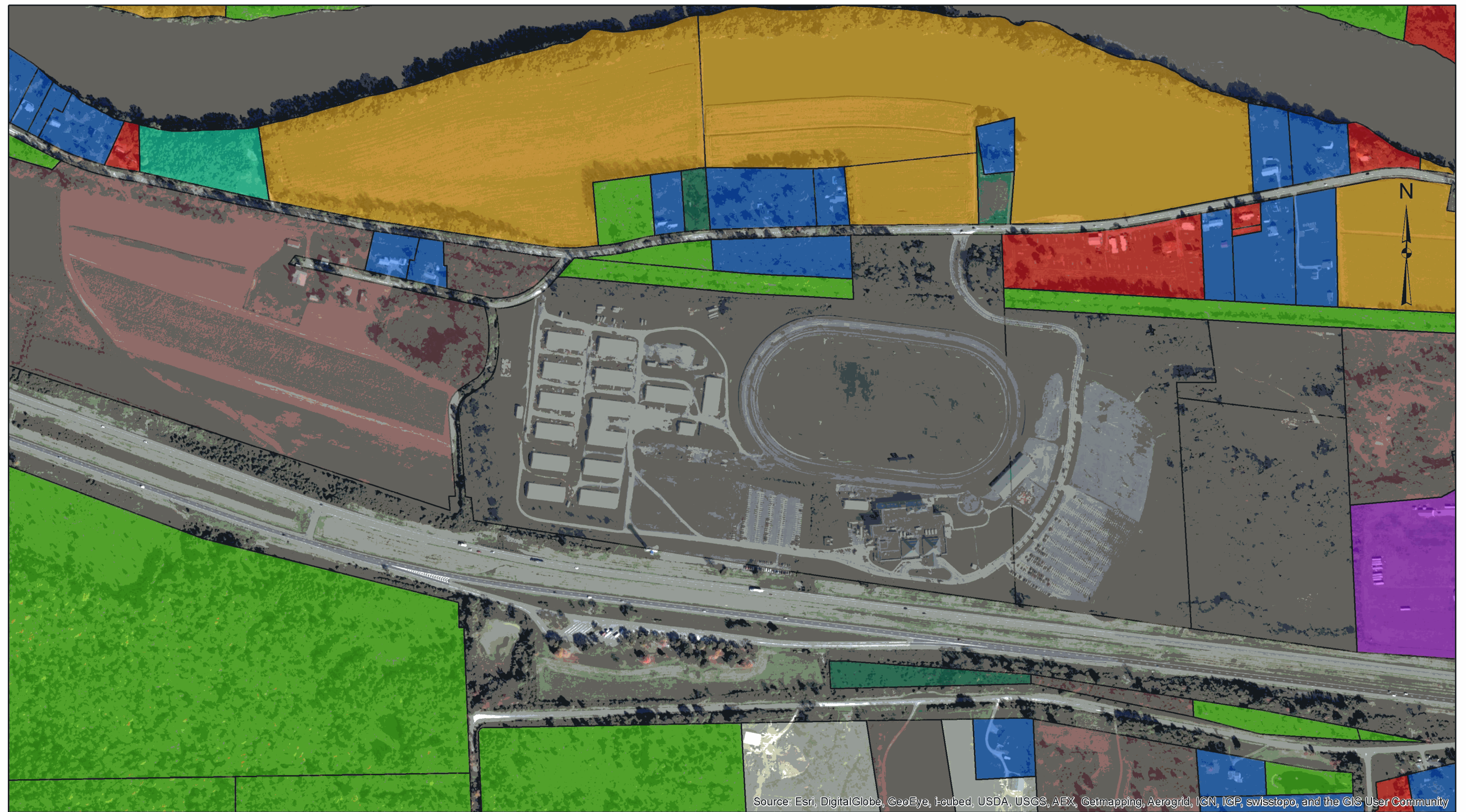




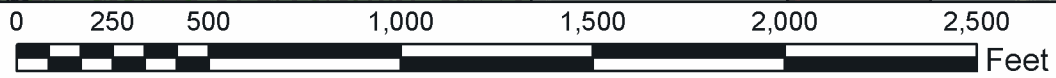
Exhibit VIII.C.1.c. – Description of Land

Submit as Exhibit VIII. C.1.c. a description of, and aerial and surface photography demonstrating, the salient topographic, geographic, and vegetative characteristics of the land for the proposed gaming facility as well as any significant existing facilities, improvements or infrastructure thereon. Provide schematics/maps of topographical, geographic and vegetative features and facilities, improvements and infrastructure. Describe and provide schematics/maps illustrating (in scale) the relationship to surrounding development and infrastructure.

See attached Land Use Map.



Source: Esri, DigitalGlobe, GeoEye, I-cubed, USDA, USGS, AEX, Getmapping, Aerogrid, IGN, IGP, swisstopo, and the GIS User Community



- | | | | | |
|--------------------------|--------------------|--------------------------|--------------|--------------|
| Auto Body Shop | Vacant Residential | Residential/Agricultural | Recreational | Vacant Rural |
| Vacant with Improvements | Manufacturing | 1 Family Residential | Agricultural | Tioga Downs |



Exhibit VIII.C.1.c: Surrounding Landuse
Nichols, NY

Tax parcel data provided by Tioga County GIS Department, 2010.

