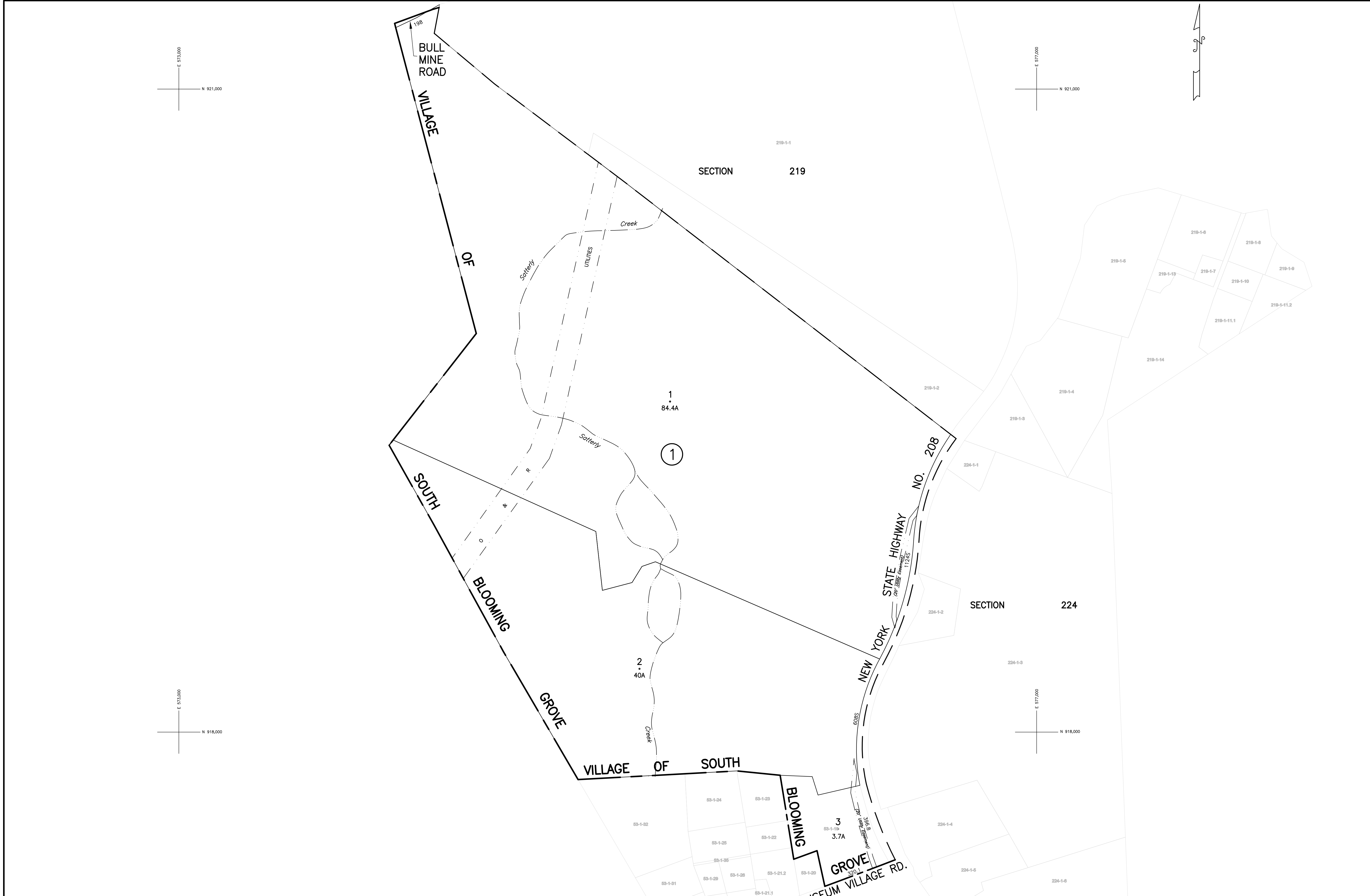


REVISION
12/01/06 L.R.
02/02/07 L.R.
03/01/07 L.R./MAW.TG
02/28/14 M.B.
03/25/14 L.R.



LEGEND

STATE OR COUNTY LINE	FILED PLAN LOT LINE	TAX MAP BLOCK NO. (4)	FILED PLAN BLOCK NO. (2) (4)
CITY TOWN OR VILLAGE	EASEMENT LINE	TAX MAP PARCEL NO. 32	FILED PLAN LOT NO. (3) or (P/o 2)
BLOCK OR SECTION LIMIT	MATCH LINE Z	AREAS (DEED) 11.1A or (CALCULATED) 11.6A(C)	STATE HIGHWAYS N.Y. STATE HWY NO 17
SPECIAL DISTRICT LINE	WATER FEATURES	DIMENSIONS (DEED) 66 or (CALCULATED) 755	COUNTY HIGHWAYS COUNTY ROAD NO 4
PROPERTY LINE	GRID COORDINATE/CENTROID	PORTION OF TAX LOT P/o 1-1-1	TOWN ROADS TOWN ROAD 1

ORANGE COUNTY—NEW YORK

Prepared by
Orange County Tax Map Department
124 Main Street, Goshen, N.Y. 10924
Phone 845.291.2498 Fax 845.291.2499

NOTICE
MAINTENANCE, ALTERATION, SALE OR DISTRIBUTION
OF ANY PORTION OF THE ORANGE COUNTY TAX
MAP IS PROHIBITED WITHOUT WRITTEN PERMISSION
OF THE O.C. REAL PROPERTY TAX SERVICE AGENCY



ADJOINING REFERENCE

332003
VILLAGE OF SOUTH BLOOMING GROVE

Scale 1" = 200' Section No. 223