

June 23, 2014

Mr. William Walsh  
Traditions Resort & Casino  
4101 Watson Boulevard  
Johnson City, NY 13790

**RE: Site Lighting Design**  
**Delta Project No.: 2014.181.001**

Dear Mr. Walsh:

Delta Engineers, Architects, & Land Surveyors, P.C. and Urda Engineering, PLLC considered the impact of additional lighting of proposed facilities. Delta is experienced in site lighting layout and design. Urda is experienced in site layout and accommodating site lighting for site safety. Quality Lighting Systems, Inc. (QLS) was consulted to provide the site lighting layout including schedule of luminaires, and site lighting levels. QLS represent many leading manufacturers of lighting systems, and provides design support to designers and specifiers. Delta and Urda reviewed the layout for electrical design and site layout (respectively). The Traditions Casino will be centrally located on a large site surrounded by a golf course and wooded and grassed lands. New lighting for driveways and parking will be provided using LED fixtures with exact directional control, limited light spillage, and zero up lighting (with the exception of building mounted accent lighting). The lighting of the Casino exterior will be subdued with the brightest element being beneath the porte cochere. Building corners and roof edges will be illuminated with LED linear and tight beam highlights. The Casino's location on a large undeveloped site will require minimal night lighting to make it adequately noticeable while not being a significant source of light pollution.

We have designed around the following foot candle values to provide safety for the patrons and not overlight the site: 10 fc at the main entry, 7 fc at the main drive, and 5 fc average for the parking.

Attached is the exhibit drawing showing the site lighting plan for your use.

Respectfully,

**DELTA ENGINEERS, ARCHITECTS, & LAND SURVEYORS, P.C.**



Donald P. Harris, PE  
Director of MEP Services

*Attachment*

top one inch to be trimmed

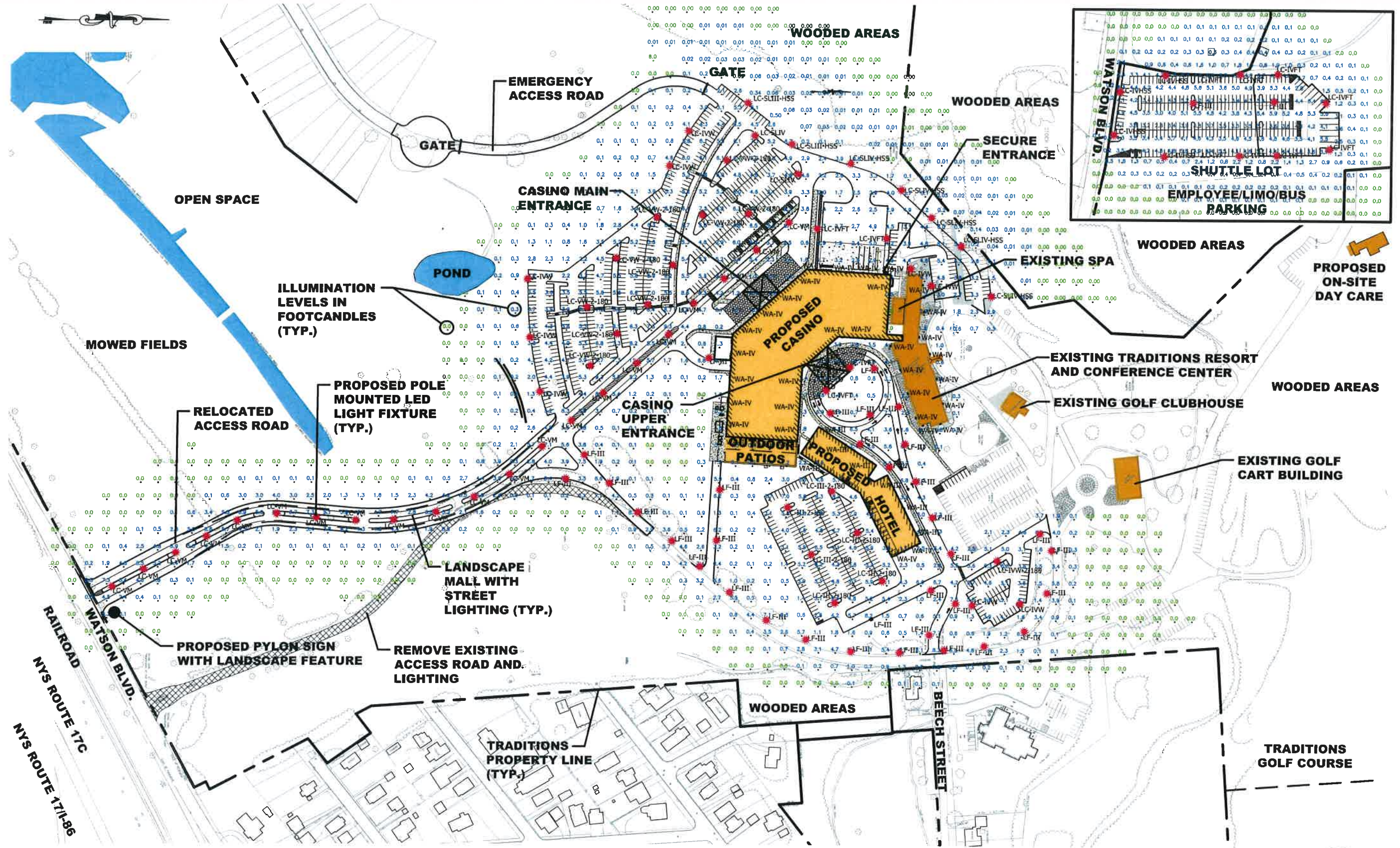


EXHIBIT: VIII.C.5.a.6.1  
EXTERIOR LIGHTING PLAN

SCALE: 1" = 200'  
JUNE 30, 2014 rev: x

