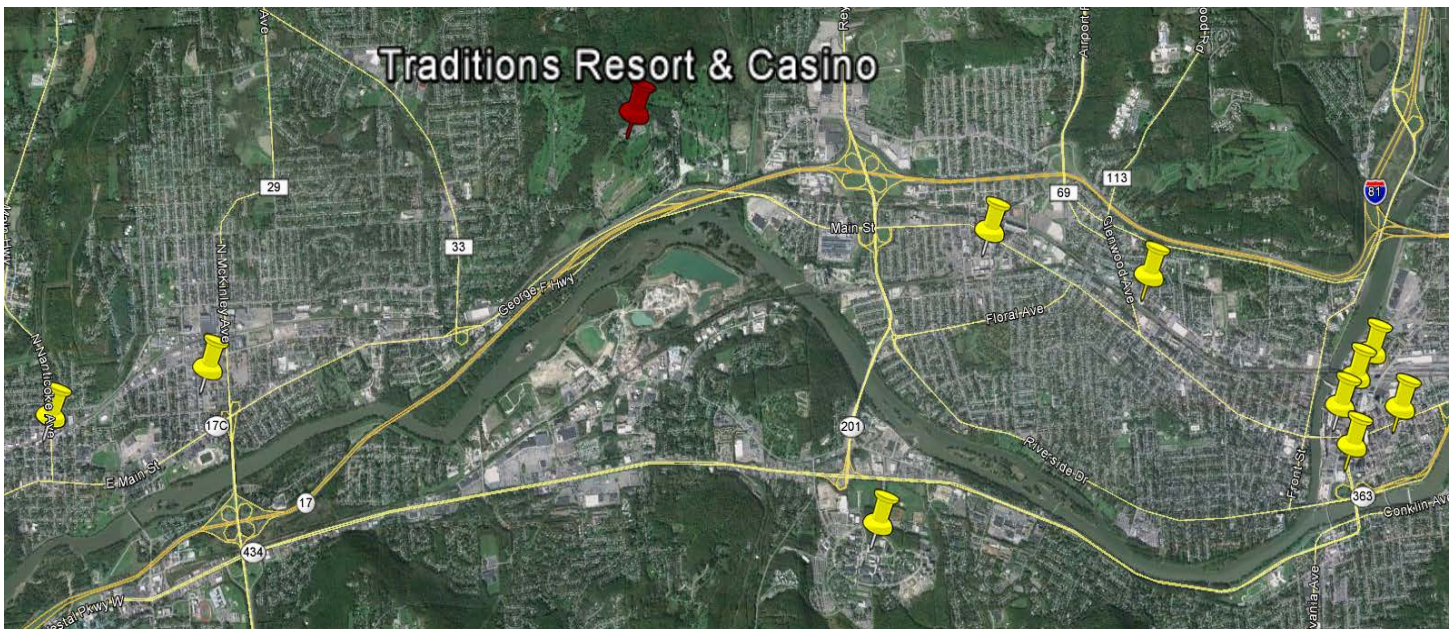


Exhibit VIII.C.9.b Complementing of entertainment venues

Traditions Resort & Casino will not have an indoor space dedicated to live entertainment. After analyzing the Broome County market, it has been decided that the existing community has a surplus of options for Arts and Theater. Within five miles of Traditions, there are ten entertainment venues that host a variety of entertainment. From the opera to Broadway shows, the community surrounding Traditions has plenty of options for resort and casino guests.

Theater Locations



- A. Endicott Performing Arts Center - 4 Miles
- B. The Cider Mill Playhouse - 3 Miles
- C. Anderson Center - 2.7 Miles
- D. Goodwill Theater - 2.25 Miles
- E. Tri Cities Opera - 3.25 Miles
- F. Binghamton Philharmonic - 4.6 Miles
- G. The Forum Theater - 4.6 Miles
- H. Art Mission Theater - 4.7 Miles
- I. Know Theater - 4.9 Miles
- J. Broome County Veterans Memorial Arena - 4.7 Miles

The Traditions team initially met with all local theater groups to discuss the offerings in the community and to see if they could be complemented. Broome County has a variety of venue space from small theaters like the Art Mission Theater to larger spaces like the Anderson Center and Broome County Arena (see map above). In lieu of competing with local venues, Traditions Resort & Casino has memorandums of understandings established with many of these venues. The intent is to allow resort and casino visitors to experience

Exhibit VIII.C.9.b

what Broome County has to offer. The relationships with the local venues will be reciprocal in nature where the venues will promote Traditions as well. The only way to economic revitalization is through promotion of the local community.

Although Traditions Resort & Casino will not have an indoor space dedicated to entertainment, there will be a variety of other options while on property. The sports bar has a large entertainment terrace that is partially covered. This space will be utilized for outdoor entertainment when it is not being used for private functions. The backdrop for the entertainment will be the views of the Susquehanna Valley.

Traditions at the Glen is already home to various forms of entertainment. Currently, there are two large tents on property that are used as function space. The Glen View tent has a 2,000 square foot patio attached to it with a waterfall and fire pit. Every Friday night during summer, this space is home to "Clammin' & Jammin'" where hundreds of loyal customers congregate for live music. The venue has become a mainstay for the community, as there are limited options for outdoor entertainment. The concerts will continue when the property transforms into Traditions Resort & Casino.

Traditions Resort & Casino will further expand tourism by offering a Summer Outdoor Concert Series that will bring some of the World's most talented artists. Currently, Broome County residents have to drive an hour and a half minimum to experience quality concerts. Many of the residents, travel to Toyota Pavilion at Montage Mountain in Scranton, PA for concerts. To keep spending in the local economy and bring in out-of-market customers, the Summer Concert Series will transform what Broome County knows as entertainment. A section of the golf course will be temporarily converted into a stage that can hold 15,000-30,000 attendees.

The Traditions team has partnered with Mountain Productions to plan, promote, construct and manage these events. After reviewing the site, Jim Evans from Mountain Productions was blown away with the potential the property possesses. Concert tickets will range from \$40 to \$80 and sometimes more for special packages. The concert series is anticipated for 4-8 shows throughout the year. This entertainment venue is the draw customers Broome County needs to increase tourism and revitalize the Southern Tier. A copy of the MOU can be found in exhibit VIII.C.9.b.1.

Traditions Resort & Casino will market the Summer Concert Series extending beyond the local market. The intent is to showcase the region as an entertainment destination. When out of market concert attendees visit the property, the local entertainment venues will be showcased within the property. This exposure will entice Traditions customers to visit other forms of entertainment within the community.

We also enlisted the assistance of the Broome County Sherriff's Department to evaluate our plans, determine feasibility from a public safety perspective and develop a proposal for

Exhibit VIII.C.9.b

traffic management. We obtained the support of the Sherriff's Union (Exhibit VIII.C.9.b.2) as well as a proposal for traffic management (Exhibit VIII.C.9.b.3).

