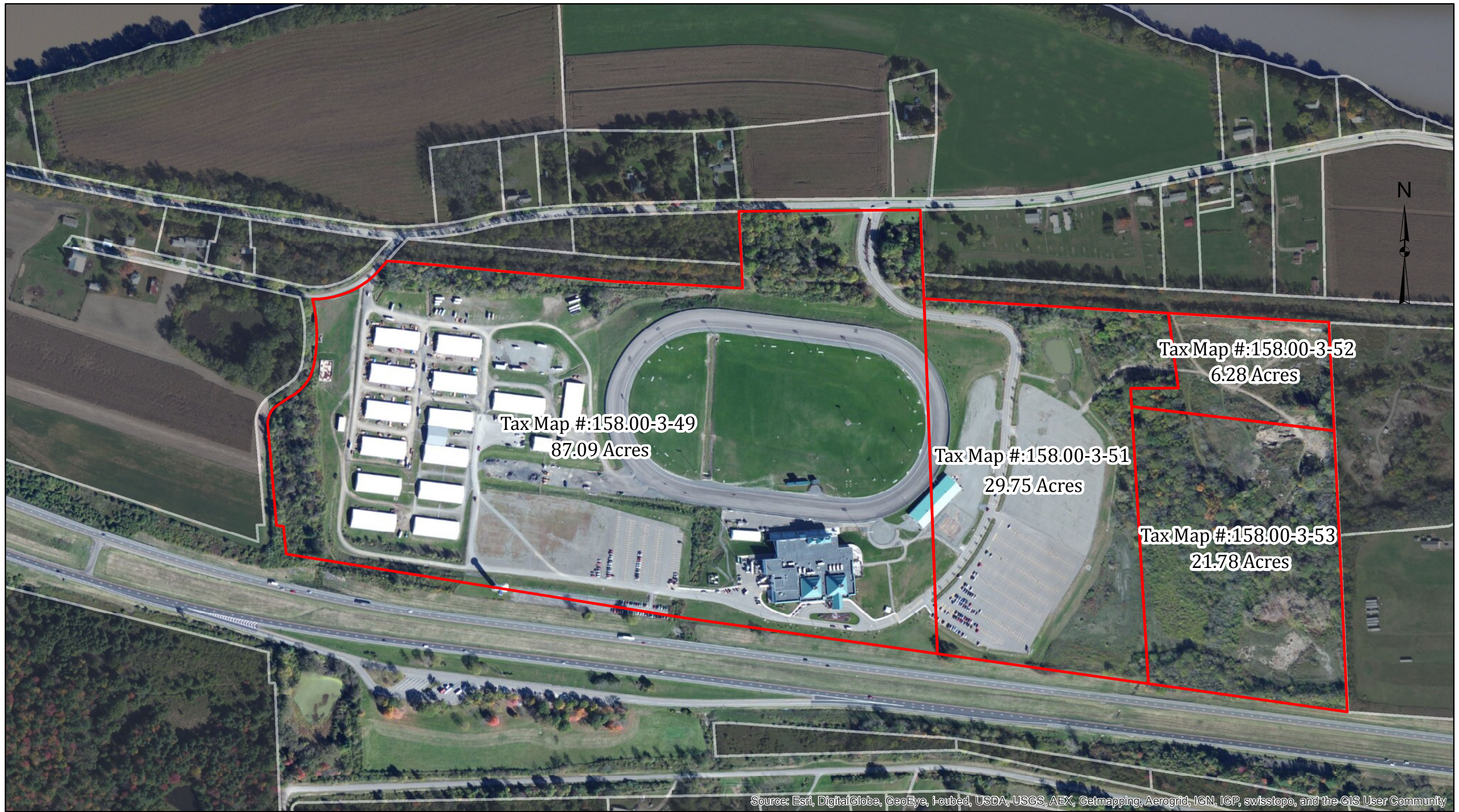


New York Gaming Facility Location Board
Response to Request for Applications to Develop and Operate a
Gaming Facility in New York State

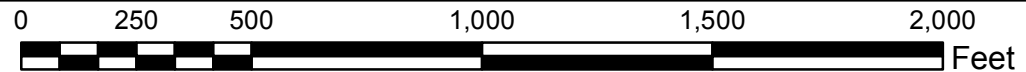
TIOGA DOWNS RACETRACK, LLC

Exhibit VIII.C.1.d.

Map of Project Site



Source: Esri, DigitalGlobe, GeoEye, Earthstar, USDA, USGS, AEX, Getmapping, Aerogrid, IGN, IGP, swisstopo, and the GIS User Community



Tioga Downs Tax Parcels Surrounding Tax Parcels



Exhibit VIII.C.1.d: Map of Project Site
Nichols, NY

Tax parcel data provided by Tioga County GIS Department, 2010.

