

LOCATIONS

UPSTATE NEW YORK OFFICE:

ALBANY, NY
5 Computer Drive West, Ste. 203
Albany, NY 12205
T: 518-438-9900

ADDITIONAL BOHLER OFFICE LOCATIONS

Bowie, Maryland
Center Valley, Pennsylvania
Chalfont, Pennsylvania
Charlotte, North Carolina
Hauppauge, New York
Philadelphia, Pennsylvania
Raleigh, North Carolina
Rehoboth Beach, Delaware
Southborough, MA
Sterling, Virginia
Towson, Maryland
Warren, New Jersey
Warrenton, Virginia
Washington, DC

Opening Soon:
New York, NY

SERVICES

CIVIL & CONSULTING ENGINEERING

- Due Diligence and Site Investigations
- Zoning and Land Development Site Plan Preparation
- Site Design and Construction Documents
- Site Grading and Drainage Plans with Utility Systems
- Stormwater Management Facility Design
- Soil Erosion and Sediment Control Plans
- Water and Sewer Systems Design
- Roadway and Highway Design
- Lighting Analysis and Design
- Regulatory Permit Approval Coordination
- Municipal Approval Coordination
- Municipal Consulting Support Services
- Land Planning
- Public Hearing Testimony
- Floodplain Revision and Mitigation

LEED AND LID DESIGN CONSULTING

- Stream Restoration
- Raingardens (Bioretention Cells)
- Planter Boxes
- Permeable/Porous Pavers
- Green Roofs
- Tree Box Filters

PROFESSIONAL LAND SURVEYING

- Boundary, Topographical, Utility, Location, ALTA and As-Builts
- Robotic Surveying and GPS Surveying

PROFESSIONAL LANDSCAPE ARCHITECTURAL SERVICES

- Open Space Planning
- Hardscape, Streetscape and Planting Design
- Tree Removal/Preservation/Replacement Plans
- As-Built Landscape Plans
- Digital/Hand Rendered Exhibits

SPECIALTY PERMITTING SERVICES

- Bond Release
- Wet/Dry Utility Coordination
- Permit Expediting
- Building Permits

WILLIAM D. GOEBEL, PE

PRINCIPAL

bgoebel@bohlereng.com

EDUCATION:

B.S. Civil & Environmental
Engineering, Clarkson University

PROFESSIONAL LICENSES:

Connecticut PE
Delaware PE
Florida PE
Maine PE
Massachusetts PE
New Hampshire PE
New Jersey PE
New York PE
Ohio PE
Rhode Island PE
Vermont PE

PROFESSIONAL AFFILIATIONS:

American Society of
Civil Engineers

National Society of
Professional Engineers

Bill has been with Bohler for over 20 years, beginning his career in New Jersey where he helped define the company's growth in both the New Jersey and New York markets, and later moving to Massachusetts as the Branch Manager of the Southborough office. Bill also led the opening of Bohler's Albany, NY and Fort Lauderdale, FL offices while in his position in New England. He continues to lead the development of Bohler's geographic reach.

His daily responsibilities include oversight and management of all operations in the Southborough and Albany offices and incorporating his extensive experience in all aspects of site planning, permitting, subdivision and development related engineering of projects including: institutional, municipal, commercial, multi-family, industrial, and residential. With a hands-on approach, Bill works directly with Bohler project managers and staff to achieve the goal of complete Client satisfaction.

His leadership and commitment to quality have made him a valuable partner and example of the Bohler tradition and Core Values we stand to uphold.

CHRIS E. BOYEA **BRANCH MANAGER**

cboyea@bohlereng.com

EDUCATION:

Hudson Valley Community College,
Civil Engineering, Technology

SUNY Institute of Technology Utica
Rome

Chris currently serves as Albany's Branch Manager and has been part of the Bohler team for 11 of his 15 years practicing civil engineering. He is responsible for day-to-day operations of the Albany office including: staff management and development, detailed design management, business development, and financial administration.

He has applied his extensive experience in site plan, subdivision and miscellaneous engineering projects throughout New England and New York including a variety of commercial, petroleum, industrial and residential projects. He is an expert in coordination and procurement of project approvals ranging from zoning and land development to building permits and has done so for over 150 projects in over 100 municipalities in New York, Massachusetts, Connecticut and Vermont.

Specific design experience includes site planning, conceptual layouts and traffic circulation, storm sewer design, sanitary sewer design including gravity mains and force mains, stormwater management including retention and detention systems, horizontal and vertical roadway alignments, grading, preparation of construction details, earthwork analysis, lighting and landscaping design, preparation of soil erosion and sediment control plans, and other miscellaneous related engineering design fields.

ROBERT W. OSTERHOUDT, PE **PROJECT MANAGER**

rosterhoudt@bohlereng.com

EDUCATION:

B.S. Civil Engineering,
Rensselaer Polytechnic Institute

A.S. Engineering Science,
Hudson Valley Community
College

A.A.S. Architectural Technology,
SUNY Delhi

PROFESSIONAL LICENSES:

New York PE

PROFESSIONAL AFFILIATIONS:

American Public Works
Association

National Society of
Professional Engineers

American Society of
Civil Engineers

Rob has over 20 years of management and design experience and is currently a Project Manager at Bohler's Albany office. Rob has effectively lead consultant teams performing due diligence, design, permitting, SEQR, and construction management on a wide variety of development projects in various market sectors including retail, office, residential, education and industrial.

His specific design experience includes site planning, conceptual layout including pedestrian and vehicle circulation, sanitary sewer design, storm water management analysis and design, water supply distribution, grading, earthwork analysis, lighting and landscaping design, soil erosion and sediment control design and other miscellaneous engineering design.

Rob continuously offers excellence in the design, regulatory permitting, scheduling and construction aspects of his position while maintaining a high level of client satisfaction on projects varying in size and scope.

Selected Project Experience:

**Mansion Square
Niskayuna, NY**

- Approximately 12 acres
- 80,000 SF of mixed-use including: retail, food market, a bank and restaurants
- Relocation of a historic building which was repurposed as a bank in the new Shopping Center
- Services Provided: Site Civil and Consulting Engineering, Surveying, Landscape Architecture
- Project completed in 2014



Winners Bayonne
Bayonne, NJ

- Approximately 25,000 SF
- Off-track wagering facility operated by developer
- Services Provided: site civil engineering and consulting services, permitting, and construction phase services
- Project completed in July 2012



**Mixed-Use Project
Colonie, NY**

- Approximately 361,000 SF
- 3 Story 45,000 SF Office Building & 7 Story 153,000 SF Hotel
- New ground up retail development located at high profile intersection on main commercial corridor in the Town of Colonie
- Services Provided: Site Civil and Consulting Engineering, Permitting, Landscape Architecture
- Project scheduled to be completed in 2016



**CarMax
Colonie, NY**

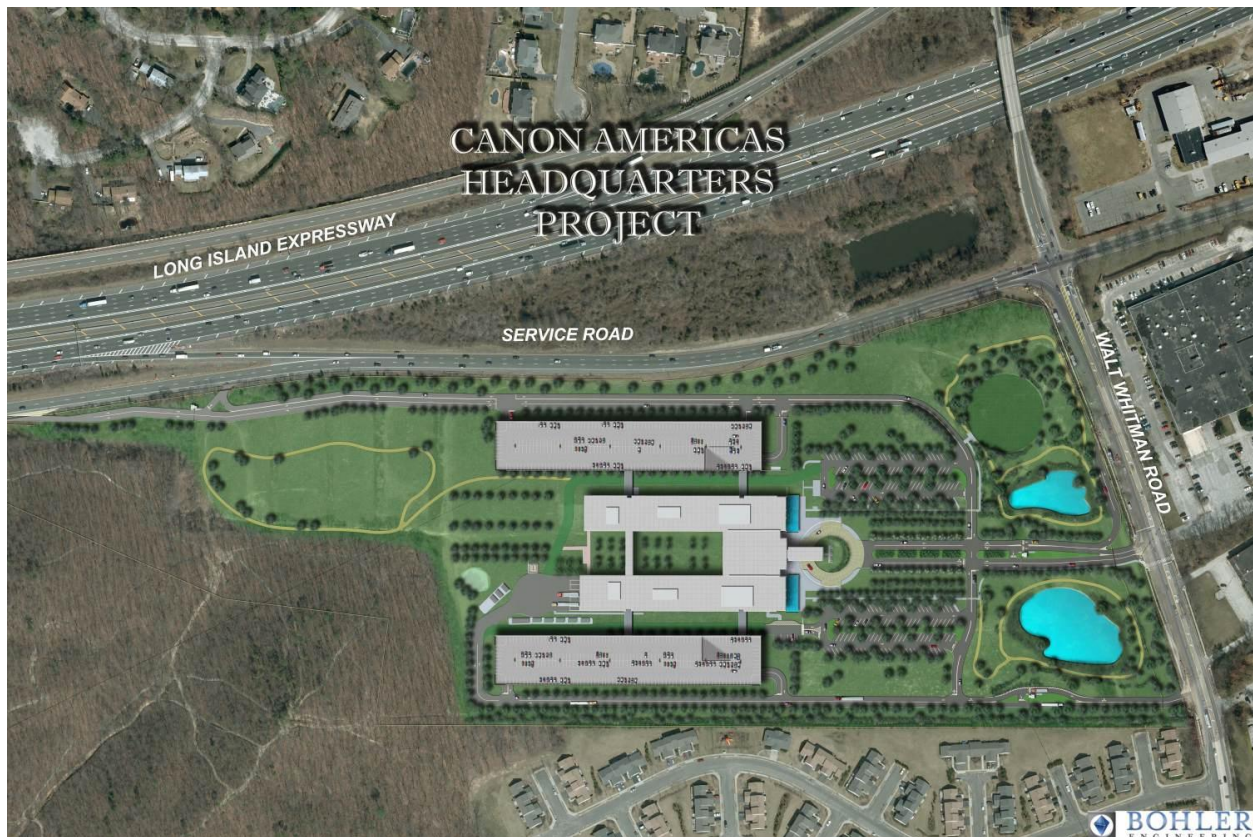
- 42,000 SF on 12+ acres
- Automotive dealership, fueling facility, car wash, and approximately 980 parking spaces
- Services Provided: Site Civil and Consulting Engineering, Surveying
- Project currently under construction



Canon USA Corporate Headquarters

Melville, NY

- 690,000 SF corporate headquarters on 52 acres
- Sustainable design elements
- Two, 800-car parking garages to conserve open space
- Services Provided: Site Civil and Consulting Engineering, Surveying, Permitting, Landscape Architecture
- LEED Gold Certification
- Project completed in 2013



Anheuser Busch Distribution Warehouse

Bronx, NY

- Design/ Build project, 13.5 acre brownfield site
- Development of a cold storage warehouse, distribution center, recycling center, and office building
- Services Provided: Site Civil and Consulting Engineering, Surveying, Permitting, Landscape Architecture
- Project completed in 2008

