

**Exhibit VIII. C.20.a**

ID	Task Mode	Task Name	Duration	Start	Finish	May 1 3/9	6/22	December 1 10/5	1/18	July 1 5/3	8/16	February 1 11/29	3/13	September 1 6/26	10/9	April 1 1/22	5/7
1		<b>Preconstruction</b>	<b>294 days</b>	<b>Tue 7/1/14</b>	<b>Fri 8/14/15</b>												
2		Notice to Proceed to Master Planner	0 days	Tue 7/1/14	Tue 7/1/14												
3		Secure Financing	22 wks	Tue 7/1/14	Mon 12/1/14												
4		Finalize Responsibility Matrix	1 wk	Tue 7/1/14	Mon 7/7/14												
5		Issue RFP for Architect and Engineer	3 wks	Tue 7/1/14	Mon 7/21/14												
6		Schematics and Background by Master Planner	5 wks	Tue 7/1/14	Mon 8/4/14												
7		RFP Review and Award	3 wks	Tue 7/22/14	Mon 8/11/14												
8		Architect and Engineer Released	0 days	Mon 8/11/14	Mon 8/11/14												
9		Architectural Drawings Civil / Structural / Utilities	12 wks	Tue 8/12/14	Mon 11/3/14												
10		Architectural Drawings Architectural	16 wks	Tue 8/12/14	Mon 12/1/14												
11		Architectural Drawings MEPs	16 wks	Tue 8/12/14	Mon 12/1/14												
12		Owner Design Review	2 wks	Tue 12/2/14	Mon 12/15/14												
13		Finalize Design	2 wks	Tue 12/16/14	Mon 12/29/14												
14		File for Permits Civil / Structural / Utilities	5 wks	Tue 11/4/14	Mon 12/8/14												
15		File for Permits Architectural	5 wks	Tue 12/2/14	Mon 1/5/15												
16		File for Permits MEP	5 wks	Tue 12/2/14	Mon 1/5/15												
17		License is Issued	1 day	Fri 1/2/15	Fri 1/2/15												
18		Full Property Secured	1 wk	Mon 1/5/15	Fri 1/9/15												
19		<b>Bidding and Buyout</b>	<b>59 days</b>	<b>Tue 12/2/14</b>	<b>Fri 2/20/15</b>												
20		Create Bid Packages	2 wks	Tue 12/2/14	Mon 12/15/14												
21		Send out for Bids	3 wks	Mon 1/5/15	Fri 1/23/15												
22		Receive and Level Bids	2 wks	Mon 1/26/15	Fri 2/6/15												
23		Negotiate with Selected Contractors	2 wks	Mon 2/9/15	Fri 2/20/15												
24		Finalize Awards and Contracts	0 days	Fri 2/20/15	Fri 2/20/15												
25		<b>General Conditions</b>	<b>11 days</b>	<b>Mon 2/23/15</b>	<b>Mon 3/9/15</b>												
26		Subcontractors Notice to Proceed	1 day	Mon 2/23/15	Mon 2/23/15												
27		Submit insurance documents	1 wk	Tue 2/24/15	Mon 3/2/15												
28		Prepare and submit final project schedule	2 wks	Tue 2/24/15	Mon 3/9/15												
29		Prepare and submit schedule of values	1 wk	Tue 2/24/15	Mon 3/2/15												
30		Submit preliminary shop drawings	2 wks	Tue 2/24/15	Mon 3/9/15												
31		Final Budget and Schedule of Values GC	1 wk	Tue 3/3/15	Mon 3/9/15												
32		<b>Long Lead Procurement</b>	<b>160 days</b>	<b>Mon 1/5/15</b>	<b>Fri 8/14/15</b>												
33		Order pumps and water reclamation equipment	16 wks	Mon 1/5/15	Fri 4/24/15												
34		Order steel	16 wks	Mon 1/5/15	Fri 4/24/15												
35		Order elevator equipment	28 wks	Mon 1/5/15	Fri 7/17/15												
36		Order HVAC units	24 wks	Mon 1/5/15	Fri 6/19/15												
37		Order substation equipment	16 wks	Mon 1/5/15	Fri 4/24/15												

Resorts World Hudson Valley	Task		Project Summary		Manual Task		Start-only		Deadline	
	Split		Inactive Task		Duration-only		Finish-only		Progress	
	Milestone		Inactive Milestone		Manual Summary Rollup		External Tasks		Manual Progress	
	Summary		Inactive Summary		Manual Summary		External Milestone			

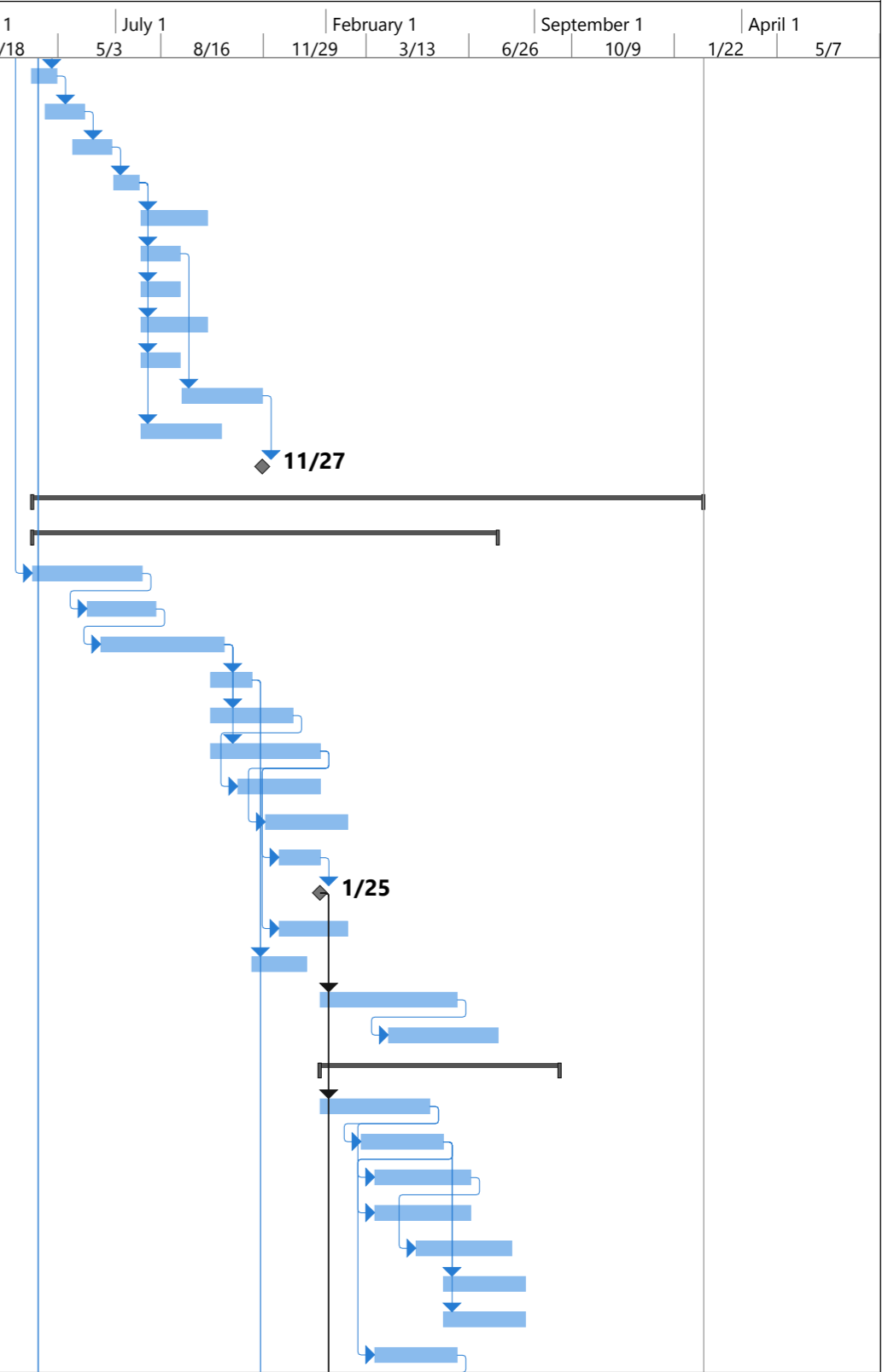
**Exhibit VIII. C.20.a**

ID	Task Mode	Task Name	Duration	Start	Finish	May 1 3/9	6/22	10/5	December 1 1/18	July 1 5/3	8/16	February 1 11/29	3/13	September 1 6/26	10/9	April 1 1/22	5/7
38		Order generators	16 wks	Mon 4/27/15	Fri 8/14/15												
39		Order UPS equipment	16 wks	Mon 4/27/15	Fri 8/14/15												
40		<b>Mobilize on Site</b>	<b>20 days</b>	<b>Mon 1/5/15</b>	<b>Fri 1/30/15</b>												
41		Groundbreaking	1 day	Mon 1/5/15	Mon 1/5/15												
42		Mobilize	2 wks	Mon 1/5/15	Fri 1/16/15												
43		Install temporary power service	2 wks	Mon 1/5/15	Fri 1/16/15												
44		Install temporary water service	3 wks	Mon 1/5/15	Fri 1/23/15												
45		Install temporary sewer connection	4 wks	Mon 1/5/15	Fri 1/30/15												
46		Set up site office	2 wks	Mon 1/19/15	Fri 1/30/15												
47		Set line and grade benchmarks	2 wks	Mon 1/5/15	Fri 1/16/15												
48		Prepare site - lay down yard and temporary fencing	3 wks	Mon 1/5/15	Fri 1/23/15												
49		<b>Roadwork</b>	<b>260 days</b>	<b>Tue 2/24/15</b>	<b>Mon 2/22/16</b>												
50		Interstate 87 Interchange / Flyover	52 wks	Tue 2/24/15	Mon 2/22/16												
51		State Route 17K Connection	26 wks	Tue 2/24/15	Mon 8/24/15												
52		Site Access Improvements	20 wks	Tue 2/24/15	Mon 7/13/15												
53		<b>Offsite Utility Improvements &amp; Connections</b>	<b>120 days</b>	<b>Tue 2/24/15</b>	<b>Mon 8/10/15</b>												
54		Water	20 wks	Tue 2/24/15	Mon 7/13/15												
55		Gas	20 wks	Tue 2/24/15	Mon 7/13/15												
56		Sewer	20 wks	Tue 2/24/15	Mon 7/13/15												
57		Electric	20 wks	Tue 2/24/15	Mon 7/13/15												
58		Grading / Road Patching & Repair	4 wks	Tue 7/14/15	Mon 8/10/15												
59		<b>Sitework</b>	<b>136 days</b>	<b>Mon 1/5/15</b>	<b>Mon 7/13/15</b>												
60		Clear & Grub site	8 wks	Mon 1/5/15	Fri 2/27/15												
61		Stone contractor access & temp parking area	3 wks	Mon 1/5/15	Fri 1/23/15												
62		Excavate for foundations	16 wks	Tue 2/24/15	Mon 6/15/15												
63		Wetland relocation	20 wks	Tue 2/24/15	Mon 7/13/15												
64		Grade site roadway for contractor use	4 wks	Mon 1/26/15	Fri 2/20/15												
65		Install storm drainage & silt protection	4 wks	Tue 2/24/15	Mon 3/23/15												
66		Excavate for utility connections	8 wks	Mon 1/5/15	Fri 2/27/15												
67		Set domestic water feed	4 wks	Mon 2/2/15	Fri 2/27/15												
68		Set sewer connection	4 wks	Mon 2/2/15	Fri 2/27/15												
69		Set electrical duct bank	6 wks	Mon 1/19/15	Fri 2/27/15												
70		Set gas line	4 wks	Mon 2/2/15	Fri 2/27/15												
71		Backfill & grade	4 wks	Mon 3/2/15	Fri 3/27/15												
72		Set benchmark & layout buildings	1 wk	Mon 3/30/15	Fri 4/3/15												
73		<b>Water Reclamation Facility</b>	<b>170 days</b>	<b>Mon 4/6/15</b>	<b>Fri 11/27/15</b>												
74		Excavate foundations	2 wks	Mon 4/6/15	Fri 4/17/15												

Resorts World Hudson Valley	Task		Project Summary		Manual Task		Start-only		Deadline	
	Split		Inactive Task		Duration-only		Finish-only		Progress	
	Milestone		Inactive Milestone		Manual Summary Rollup		External Tasks		Manual Progress	
	Summary		Inactive Summary		Manual Summary		External Milestone			

**Exhibit VIII. C.20.a**

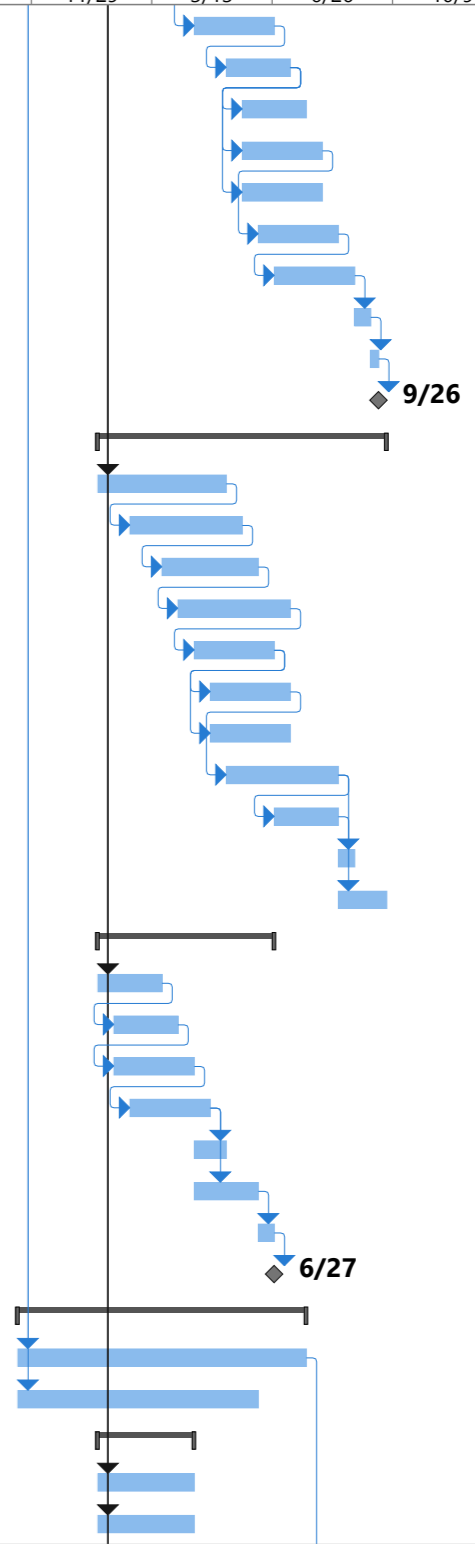
ID	Task Mode	Task Name	Duration	Start	Finish	Gantt Chart Timeline															
						May 1	6/22	10/5	December 1	1/18	July 1	8/16	February 1	3/13	September 1	10/9	April 1	1/22	5/7		
75		Underground work	4 wks	Mon 4/6/15	Fri 5/1/15																
76		Concrete	6 wks	Mon 4/20/15	Fri 5/29/15																
77		CMU walls	6 wks	Mon 5/18/15	Fri 6/26/15																
78		Set Roof	4 wks	Mon 6/29/15	Fri 7/24/15																
79		Finishes	10 wks	Mon 7/27/15	Fri 10/2/15																
80		Mechanical rough	6 wks	Mon 7/27/15	Fri 9/4/15																
81		Electrical rough	6 wks	Mon 7/27/15	Fri 9/4/15																
82		Plumbing rough	10 wks	Mon 7/27/15	Fri 10/2/15																
83		Sprinkler rough	6 wks	Mon 7/27/15	Fri 9/4/15																
84		MEPS Finishes	12 wks	Mon 9/7/15	Fri 11/27/15																
85		Set equipment	12 wks	Mon 7/27/15	Fri 10/16/15																
86		Power up facility	0 days	Fri 11/27/15	Fri 11/27/15																
87		<b>Casino</b>	<b>490 days</b>	<b>Tue 4/7/15</b>	<b>Mon 2/20/17</b>																
88		<b>Core &amp; Shell</b>	<b>340 days</b>	<b>Tue 4/7/15</b>	<b>Mon 7/25/16</b>																
89		Foundations and Piers	16 wks	Tue 4/7/15	Mon 7/27/15																
90		Slab on Grade	10 wks	Tue 6/2/15	Mon 8/10/15																
91		Structural Steel	18 wks	Tue 6/16/15	Mon 10/19/15																
92		Cast-in-place Shafts	6 wks	Tue 10/6/15	Mon 11/16/15																
93		Set Trusses and Roof Deck	12 wks	Tue 10/6/15	Mon 12/28/15																
94		Frame Exterior Wall and Sheath	16 wks	Tue 10/6/15	Mon 1/25/16																
95		Set Roof Insulation & Covering	12 wks	Tue 11/3/15	Mon 1/25/16																
96		Install Windows	12 wks	Tue 12/1/15	Mon 2/22/16																
97		Exterior Doors & Storefronts	6 wks	Tue 12/15/15	Mon 1/25/16																
98		Casino is Water Tight	0 days	Mon 1/25/16	Mon 1/25/16																
99		EIFS	10 wks	Tue 12/15/15	Mon 2/22/16																
100		Install Stair Towers	8 wks	Tue 11/17/15	Mon 1/11/16																
101		Interior Framing & Doors	20 wks	Tue 1/26/16	Mon 6/13/16																
102		Ceiling Grid & Framing	16 wks	Tue 4/5/16	Mon 7/25/16																
103		<b>Casino Floor</b>	<b>175 days</b>	<b>Tue 1/26/16</b>	<b>Mon 9/26/16</b>																
104		Frame Columns & Soffits	16 wks	Tue 1/26/16	Mon 5/16/16																
105		Ceiling Grid	12 wks	Tue 3/8/16	Mon 5/30/16																
106		Pull Lighting Power	14 wks	Tue 3/22/16	Mon 6/27/16																
107		Pull Overhead LV, Security & AV	14 wks	Tue 3/22/16	Mon 6/27/16																
108		Ceiling Finishes	14 wks	Tue 5/3/16	Mon 8/8/16																
109		Wall Finishes	12 wks	Tue 5/31/16	Mon 8/22/16																
110		Column Finishes	12 wks	Tue 5/31/16	Mon 8/22/16																
111		Access Floor	12 wks	Tue 3/22/16	Mon 6/13/16																



Resorts World Hudson Valley	Task		Project Summary		Manual Task		Start-only		Deadline	
	Split		Inactive Task		Duration-only		Finish-only		Progress	
	Milestone		Inactive Milestone		Manual Summary Rollup		External Tasks		Manual Progress	
	Summary		Inactive Summary		Manual Summary		External Milestone			

**Exhibit VIII. C.20.a**

ID	Task Mode	Task Name	Duration	Start	Finish	May 1		December 1		July 1		February 1		September 1		April 1	
						3/9	6/22	10/5	1/18	5/3	8/16	11/29	3/13	6/26	10/9	1/22	5/7
112		Carpet	10 wks	Tue 4/19/16	Mon 6/27/16												
113		Gaming Layout	8 wks	Tue 5/17/16	Mon 7/11/16												
114		Coredrill	8 wks	Tue 5/31/16	Mon 7/25/16												
115		Pull Game Power	10 wks	Tue 5/31/16	Mon 8/8/16												
116		Pull Game LV	10 wks	Tue 5/31/16	Mon 8/8/16												
117		Set Bases	10 wks	Tue 6/14/16	Mon 8/22/16												
118		Install Machines	10 wks	Tue 6/28/16	Mon 9/5/16												
119		Test Machines	2 wks	Tue 9/6/16	Mon 9/19/16												
120		Set Chairs	1 wk	Tue 9/20/16	Mon 9/26/16												
121		Gaming Floor Complete	0 days	Mon 9/26/16	Mon 9/26/16												
122		<b>Restaurants &amp; FOH</b>	<b>180 days</b>	<b>Tue 1/26/16</b>	<b>Mon 10/3/16</b>												
123		Frame Columns & Soffits	16 wks	Tue 1/26/16	Mon 5/16/16												
124		Ceiling Grid	14 wks	Tue 2/23/16	Mon 5/30/16												
125		Ceiling Finishes	12 wks	Tue 3/22/16	Mon 6/13/16												
126		Wall Finishes	14 wks	Tue 4/5/16	Mon 7/11/16												
127		Column Finishes	10 wks	Tue 4/19/16	Mon 6/27/16												
128		Access Floor	10 wks	Tue 5/3/16	Mon 7/11/16												
129		Built-up Flooring	10 wks	Tue 5/3/16	Mon 7/11/16												
130		Flooring Finishes	14 wks	Tue 5/17/16	Mon 8/22/16												
131		Set Equipment	8 wks	Tue 6/28/16	Mon 8/22/16												
132		Testing & Inspections	2 wks	Tue 8/23/16	Mon 9/5/16												
133		Place Furniture	6 wks	Tue 8/23/16	Mon 10/3/16												
134		<b>BOH</b>	<b>110 days</b>	<b>Tue 1/26/16</b>	<b>Mon 6/27/16</b>												
135		Ceiling Grid	8 wks	Tue 1/26/16	Mon 3/21/16												
136		Ceiling Finishes	8 wks	Tue 2/9/16	Mon 4/4/16												
137		Wall Finishes	10 wks	Tue 2/9/16	Mon 4/18/16												
138		Floor Finishes	10 wks	Tue 2/23/16	Mon 5/2/16												
139		Office Furniture	4 wks	Tue 4/19/16	Mon 5/16/16												
140		Cubicles	8 wks	Tue 4/19/16	Mon 6/13/16												
141		Inspections	2 wks	Tue 6/14/16	Mon 6/27/16												
142		Temporary Approval to Occupy	0 days	Mon 6/27/16	Mon 6/27/16												
143		<b>Convenience</b>	<b>180 days</b>	<b>Tue 11/17/15</b>	<b>Mon 7/25/16</b>												
144		Elevators	36 wks	Tue 11/17/15	Mon 7/25/16												
145		Escalators	30 wks	Tue 11/17/15	Mon 6/13/16												
146		<b>Central Plant</b>	<b>60 days</b>	<b>Tue 1/26/16</b>	<b>Mon 4/18/16</b>												
147		Set Substation Equipment	12 wks	Tue 1/26/16	Mon 4/18/16												
148		Set HVAC Chillers & Heaters	12 wks	Tue 1/26/16	Mon 4/18/16												



Resorts World Hudson Valley	Task		Project Summary		Manual Task		Start-only		Deadline	
	Split		Inactive Task		Duration-only		Finish-only		Progress	
	Milestone		Inactive Milestone		Manual Summary Rollup		External Tasks		Manual Progress	
	Summary		Inactive Summary		Manual Summary		External Milestone			

**Exhibit VIII. C.20.a**

ID	Task Mode	Task Name	Duration	Start	Finish	May 1 3/9	6/22	December 1 10/5	1/18	July 1 5/3	8/16	February 1 11/29	3/13	September 1 6/26	10/9	April 1 1/22	5/7
149		Set Plumbing & Fire Protection Pumps	12 wks	Tue 1/26/16	Mon 4/18/16												
150		<b>Mechanical</b>	<b>220 days</b>	<b>Tue 1/26/16</b>	<b>Mon 11/28/16</b>												
151		Mechanical rough	20 wks	Tue 1/26/16	Mon 6/13/16												
152		Mechanical Unit Feeds & Returns from Central Plant	20 wks	Tue 1/26/16	Mon 6/13/16												
153		Mechanical Finishes	20 wks	Tue 6/14/16	Mon 10/31/16												
154		Testing & Balancing	4 wks	Tue 11/1/16	Mon 11/28/16												
155		<b>Plumbing</b>	<b>220 days</b>	<b>Tue 1/26/16</b>	<b>Mon 11/28/16</b>												
156		Reclaimed Water Lines	20 wks	Tue 1/26/16	Mon 6/13/16												
157		Domestic Water Lines	20 wks	Tue 1/26/16	Mon 6/13/16												
158		Gas Lines	16 wks	Tue 1/26/16	Mon 5/16/16												
159		Sprinkler System	24 wks	Tue 1/26/16	Mon 7/11/16												
160		Fixtures & Finishes	20 wks	Tue 6/14/16	Mon 10/31/16												
161		System Flush & Testing	4 wks	Tue 11/1/16	Mon 11/28/16												
162		<b>Electrical</b>	<b>220 days</b>	<b>Tue 1/26/16</b>	<b>Mon 11/28/16</b>												
163		Electrical Rough	20 wks	Tue 1/26/16	Mon 6/13/16												
164		Low Voltage Rough	20 wks	Tue 1/26/16	Mon 6/13/16												
165		Fire Alarm Rough	20 wks	Tue 1/26/16	Mon 6/13/16												
166		Electrical Finishes	24 wks	Tue 6/14/16	Mon 11/28/16												
167		Low Voltage Finishes	24 wks	Tue 6/14/16	Mon 11/28/16												
168		Fire Alarm Finishes	20 wks	Tue 6/14/16	Mon 10/31/16												
169		Fire Alarm Testing	4 wks	Tue 11/1/16	Mon 11/28/16												
170		<b>Final Clean-up and Occupancy</b>	<b>5 days</b>	<b>Tue 11/29/16</b>	<b>Mon 12/5/16</b>												
171		Remove debris from building and do final clean-up	1 wk	Tue 11/29/16	Mon 12/5/16												
172		Substantial completion date	0 days	Mon 12/5/16	Mon 12/5/16												
173		Temporary Approval of Occupancy	0 days	Mon 12/5/16	Mon 12/5/16												
174		<b>Complete Final Inspections</b>	<b>105 days</b>	<b>Tue 7/26/16</b>	<b>Mon 12/19/16</b>												
175		Complete elevator inspection and certification	8 wks	Tue 7/26/16	Mon 9/19/16												
176		Perform architect's inspection	2 wks	Tue 11/29/16	Mon 12/12/16												
177		Perform local building agency inspection	2 wks	Tue 12/6/16	Mon 12/19/16												
178		Perform Fire Marshal's inspection	2 wks	Tue 12/6/16	Mon 12/19/16												
179		<b>Operations</b>	<b>17.5 days</b>	<b>Tue 12/6/16</b>	<b>Thu 12/29/16</b>												
180		Training	2.5 wks	Tue 12/6/16	Thu 12/22/16												
181		Soft Opening	1 wk	Thu 12/22/16	Thu 12/29/16												
182		Grand Opening	0 days	Thu 12/29/16	Thu 12/29/16												
183		<b>Closeout</b>	<b>50 days</b>	<b>Tue 12/13/16</b>	<b>Mon 2/20/17</b>												
184		Complete punch list items from all inspections	2 wks	Tue 12/13/16	Mon 12/26/16												
185		Obtain certificate of occupancy	0 days	Mon 12/26/16	Mon 12/26/16												

Resorts World Hudson Valley	Task		Project Summary		Manual Task		Start-only		Deadline	
	Split		Inactive Task		Duration-only		Finish-only		Progress	
	Milestone		Inactive Milestone		Manual Summary Rollup		External Tasks		Manual Progress	
	Summary		Inactive Summary		Manual Summary		External Milestone			

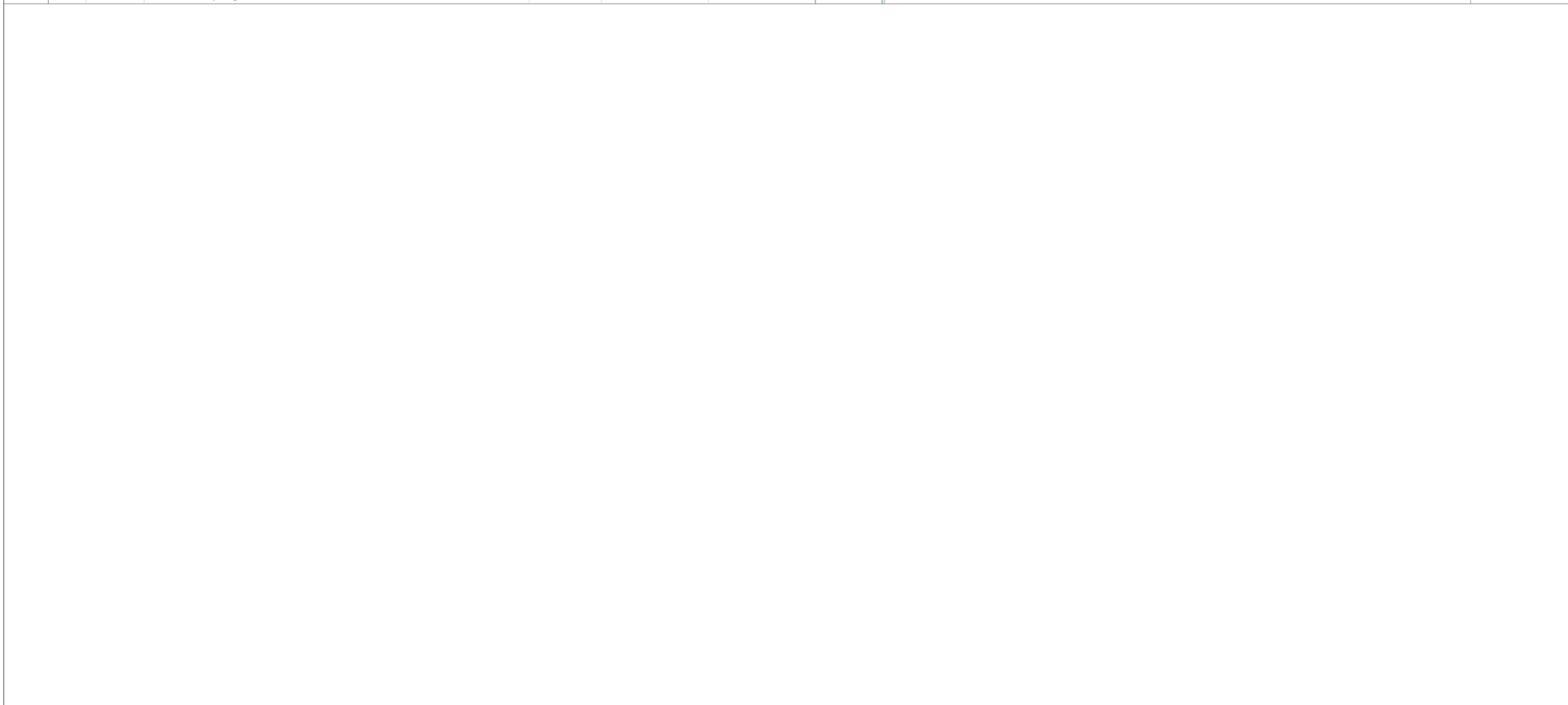
**Exhibit VIII. C.20.a**

ID	Task Mode	Task Name	Duration	Start	Finish	May 1 3/9	6/22	December 1 10/5	1/18	July 1 5/3	8/16	February 1 11/29	3/13	September 1 6/26	10/9	1/22	April 1 5/7
186		Issue final completion documents including warrant	8 wks	Tue 12/27/16	Mon 2/20/17												
187		Issue final request for payment	0 days	Mon 2/20/17	Mon 2/20/17												
188		Permanent Operations Financing Secured	4 wks	Thu 12/29/16	Thu 1/26/17												
189		<b>Hotel</b>	<b>455 days</b>	<b>Mon 4/6/15</b>	<b>Fri 12/30/16</b>												
190		Foundations and Piers	12 wks	Mon 4/6/15	Fri 6/26/15												
191		Slab on Grade	10 wks	Mon 5/4/15	Fri 7/10/15												
192		Structural Steel	30 wks	Mon 6/15/15	Fri 1/8/16												
193		Hollowcore Planks	24 wks	Mon 7/27/15	Fri 1/8/16												
194		CMU Shafts	20 wks	Mon 11/16/15	Fri 4/1/16												
195		Set Trusses and Roof Deck	8 wks	Mon 1/11/16	Fri 3/4/16												
196		Frame Exterior Wall and Sheath	20 wks	Mon 1/11/16	Fri 5/27/16												
197		Set Roof Insulation & Covering	8 wks	Mon 3/7/16	Fri 4/29/16												
198		Install Windows	10 wks	Mon 4/18/16	Fri 6/24/16												
199		Exterior Doors & Storefronts	6 wks	Mon 5/30/16	Fri 7/8/16												
200		EIFS	16 wks	Mon 3/21/16	Fri 7/8/16												
201		Install Stair Towers	12 wks	Mon 3/7/16	Fri 5/27/16												
202		Install Elevators	24 wks	Mon 1/11/16	Fri 6/24/16												
203		Interior Framing & Doors	20 wks	Mon 5/30/16	Fri 10/14/16												
204		Ceiling Grid & Framing	20 wks	Mon 6/13/16	Fri 10/28/16												
205		Interior Finishes	20 wks	Mon 8/8/16	Fri 12/23/16												
206		Mechanical	30 wks	Mon 5/30/16	Fri 12/23/16												
207		Plumbing	30 wks	Mon 5/30/16	Fri 12/23/16												
208		Sprinkler	24 wks	Mon 5/30/16	Fri 11/11/16												
209		Electrical	30 wks	Mon 5/30/16	Fri 12/23/16												
210		Low Voltage	30 wks	Mon 5/30/16	Fri 12/23/16												
211		Fire Alarm	24 wks	Mon 5/30/16	Fri 11/11/16												
212		Testing & Inspections	1 wk	Mon 12/26/16	Fri 12/30/16												
213		Occupancy	0 days	Fri 12/30/16	Fri 12/30/16												
214		<b>Garage</b>	<b>280 days</b>	<b>Mon 4/6/15</b>	<b>Fri 4/29/16</b>												
215		Foundations & Piers	12 wks	Mon 4/6/15	Fri 6/26/15												
216		Slab on Grade	8 wks	Mon 5/18/15	Fri 7/10/15												
217		Precast Construction	30 wks	Mon 7/13/15	Fri 2/5/16												
218		Photovoltaic Structure & System	12 wks	Mon 2/8/16	Fri 4/29/16												
219		Bus Depot Sprinkler	6 wks	Mon 2/8/16	Fri 3/18/16												
220		Fire Risers	8 wks	Mon 2/8/16	Fri 4/1/16												
221		Lighting & Power	12 wks	Mon 2/8/16	Fri 4/29/16												
222		Surveillance	12 wks	Mon 2/8/16	Fri 4/29/16												

Resorts World Hudson Valley	Task		Project Summary		Manual Task		Start-only		Deadline	
	Split		Inactive Task		Duration-only		Finish-only		Progress	
	Milestone		Inactive Milestone		Manual Summary Rollup		External Tasks		Manual Progress	
	Summary		Inactive Summary		Manual Summary		External Milestone			

**Exhibit VIII. C.20.a**

ID	Task Mode	Task Name	Duration	Start	Finish	May 1 3/9	6/22	December 1 10/5	1/18	July 1 5/3	8/16	February 1 11/29	3/13	September 1 6/26	10/9	April 1 1/22	5/7
223		Painting & Stripping	6 wks	Mon 2/8/16	Fri 3/18/16												
224		<b>Site Finishes</b>	<b>120 days</b>	<b>Mon 3/21/16</b>	<b>Fri 9/2/16</b>												
225		Final Grading	12 wks	Mon 3/21/16	Fri 6/10/16												
226		Curbs & Walks	16 wks	Mon 3/21/16	Fri 7/8/16												
227		Paving & Stripping	12 wks	Mon 5/16/16	Fri 8/5/16												
228		Landscaping	8 wks	Mon 7/11/16	Fri 9/2/16												



Resorts World Hudson Valley	Task		Project Summary		Manual Task		Start-only		Deadline	
	Split		Inactive Task		Duration-only		Finish-only		Progress	
	Milestone		Inactive Milestone		Manual Summary Rollup		External Tasks		Manual Progress	
	Summary		Inactive Summary		Manual Summary		External Milestone			