

SLOT COUNT = 2150
TABLE COUNT = 61

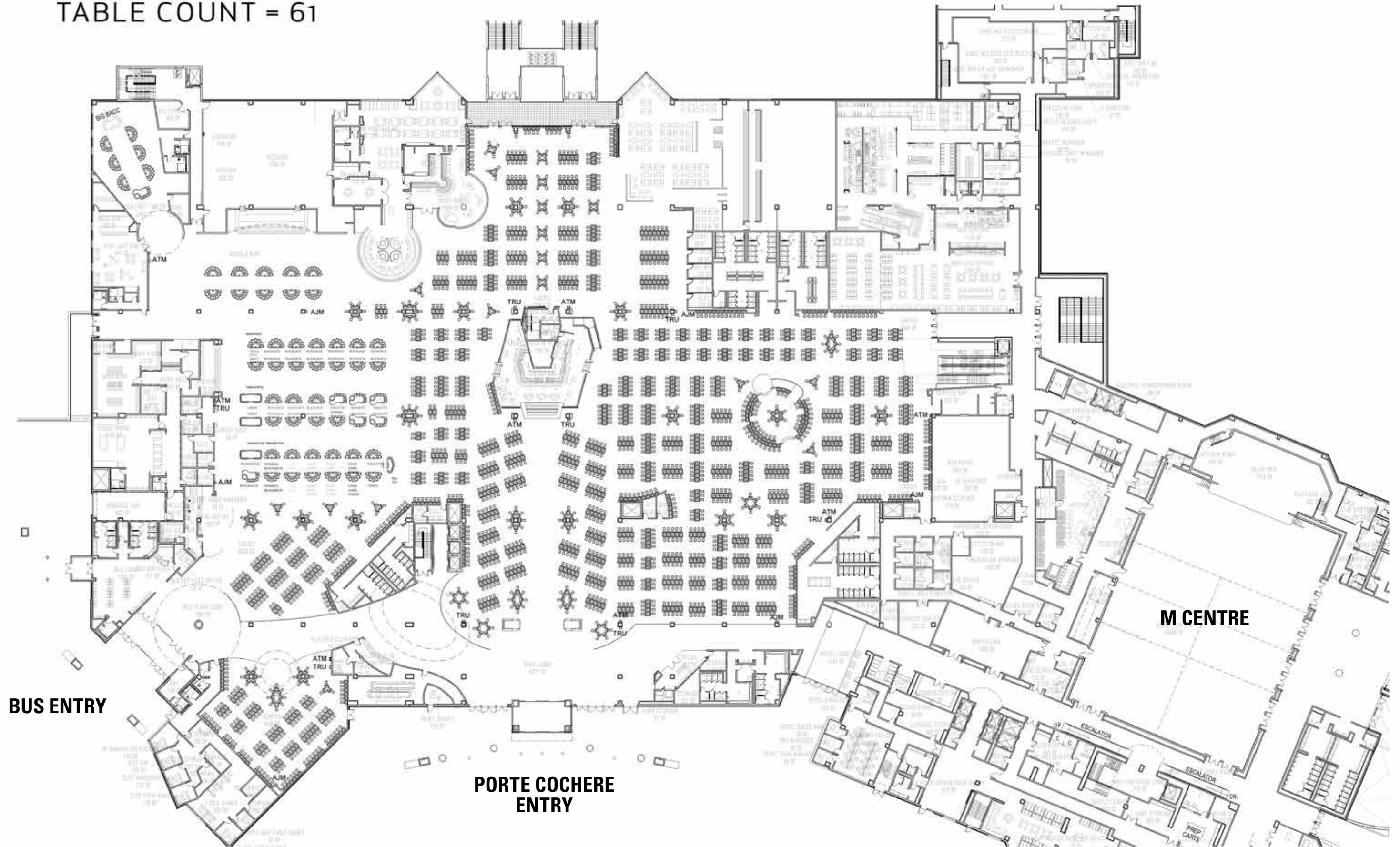
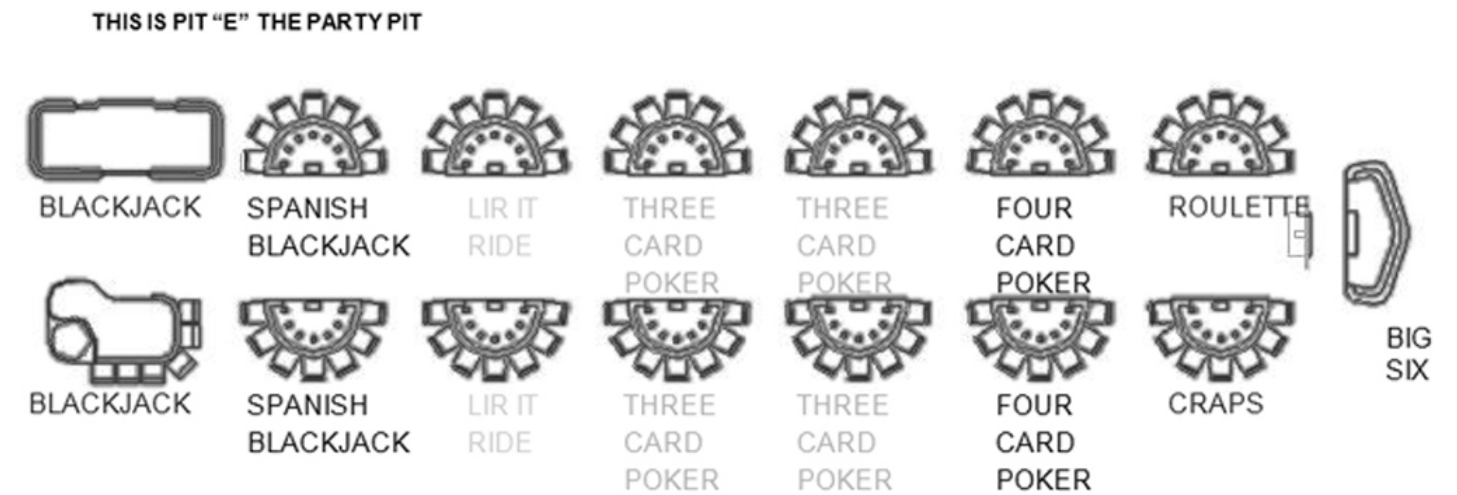
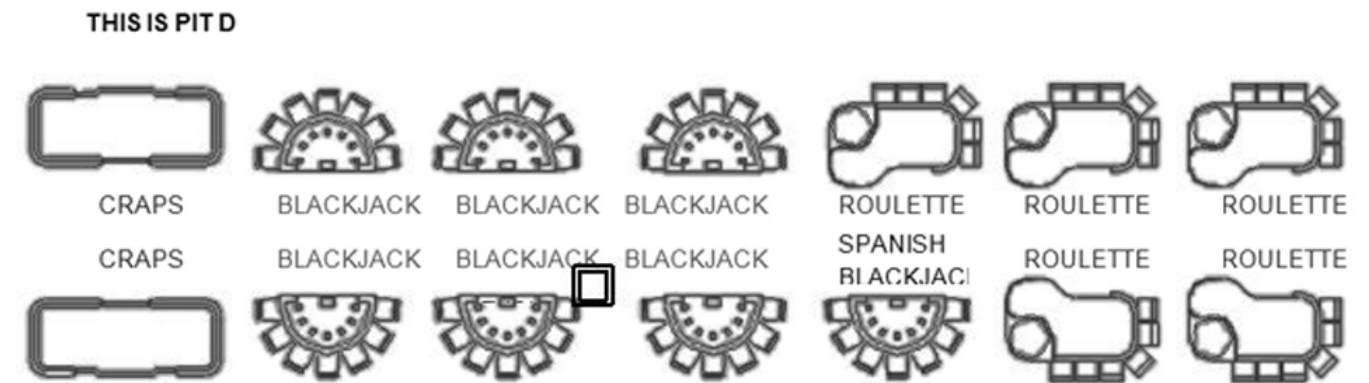
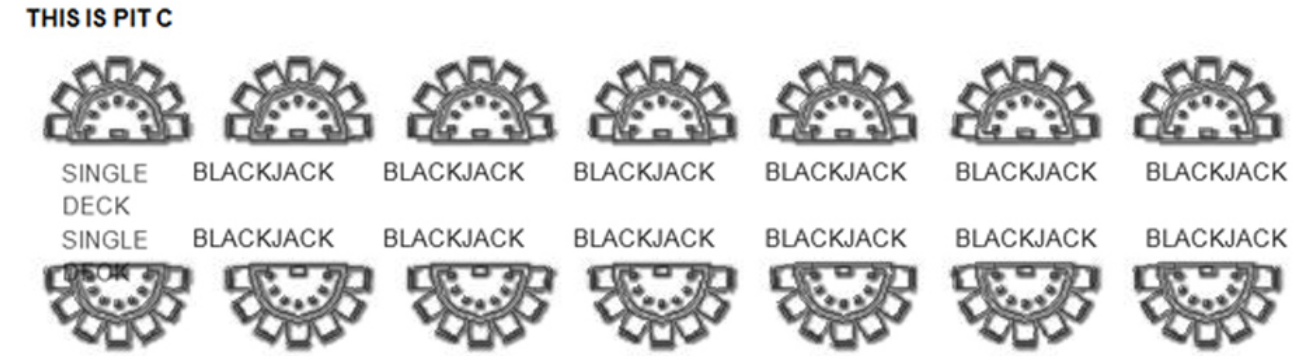
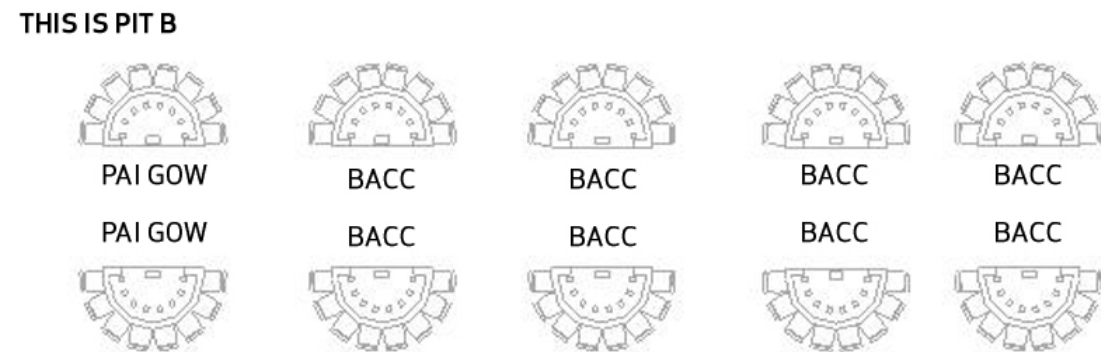
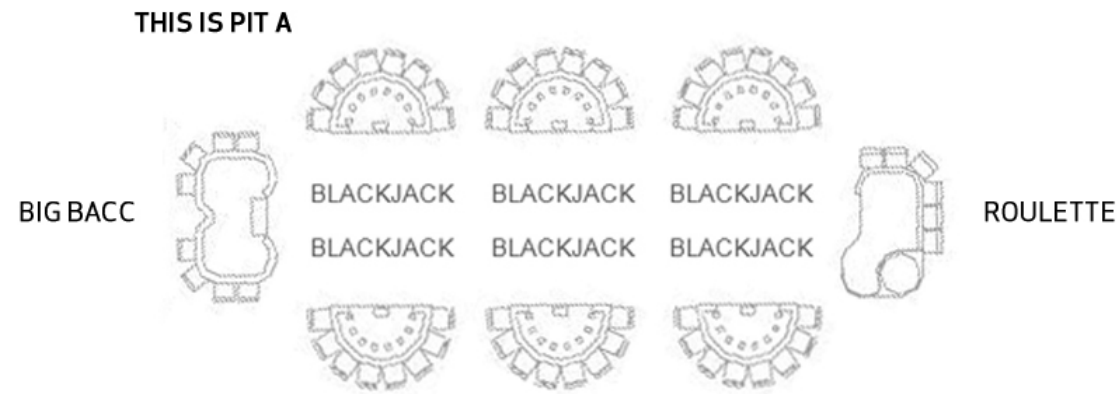


Table Games Diagram



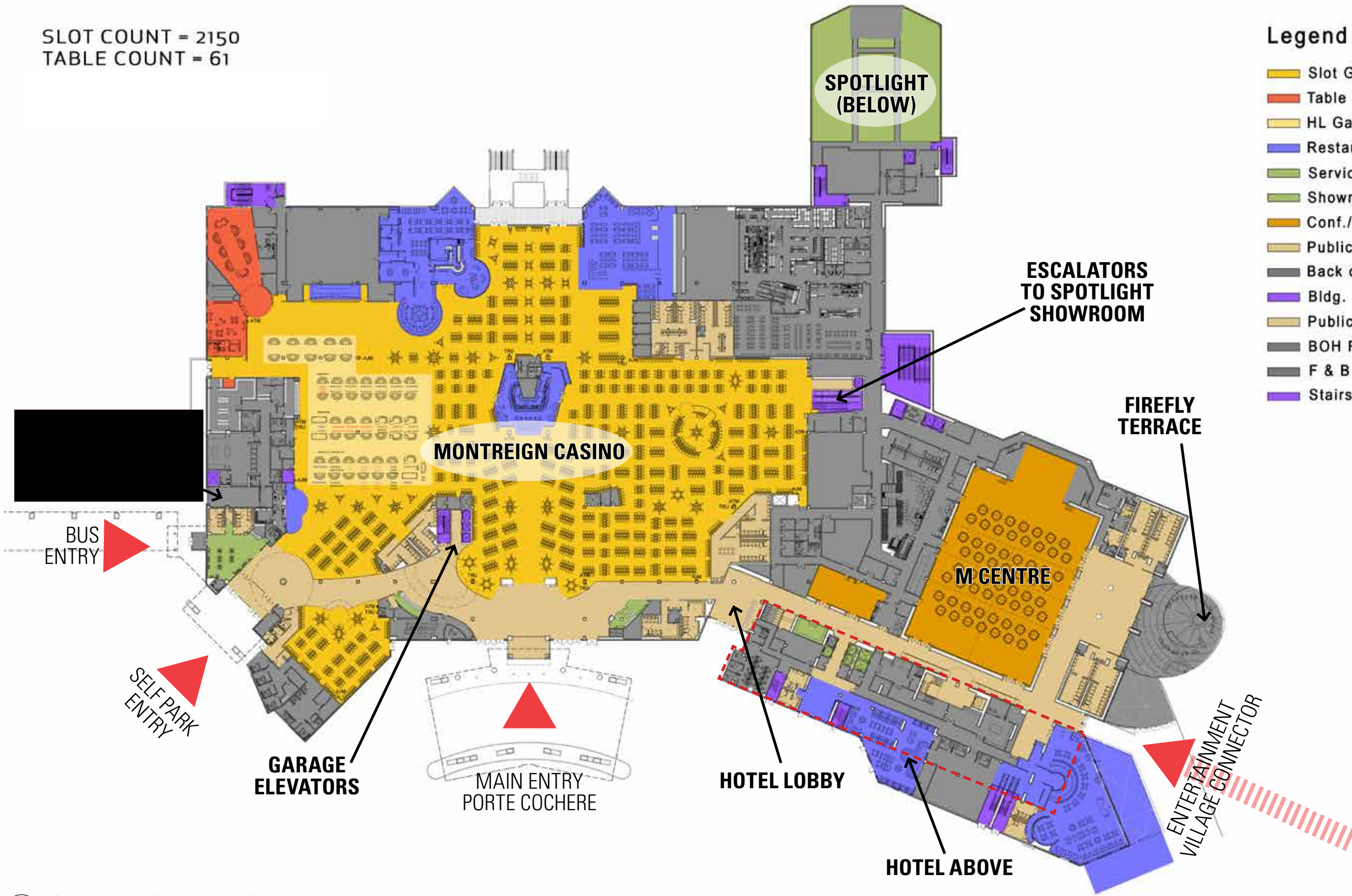
LEGEND

1. **PIT A** - BACCARAT PIT 8 GAMES with SIX BLACKJACK GAMES, ONE SINGLE ZERO ROULETTE, and ONE BIG BACCARAT
2. **PIT B** - ASIAN PIT 10 GAMES with SIX MINI/BACCARAT, ONE PAI GOW POKER, and ONE PAI GOW TILES
3. **PIT C** - 14 GAMES with TWELVE BLACKJACK GAMES, and TWO SINGLE DECK BLACKJACK GAMES
4. **PIT D** - 14 GAMES with TWO CRAPS, SIX BLACKJACK, ONE SPANISH BLACKJACK, and FIVE ROULETTE
5. **PIT E** - PARTY PIT 15 GAMES with TWO BLACKJACK, TWO SPANISH BLACKJACK, TWO LET IT RIDE, FOUR THREE CARD POKER, TWO FOUR CARD POKER, ONE ROULETTE, ONE CRAPS, and ONE BIG SIX WHEEL

SLOT COUNT = 2150
TABLE COUNT = 61

Legend and Area Summary

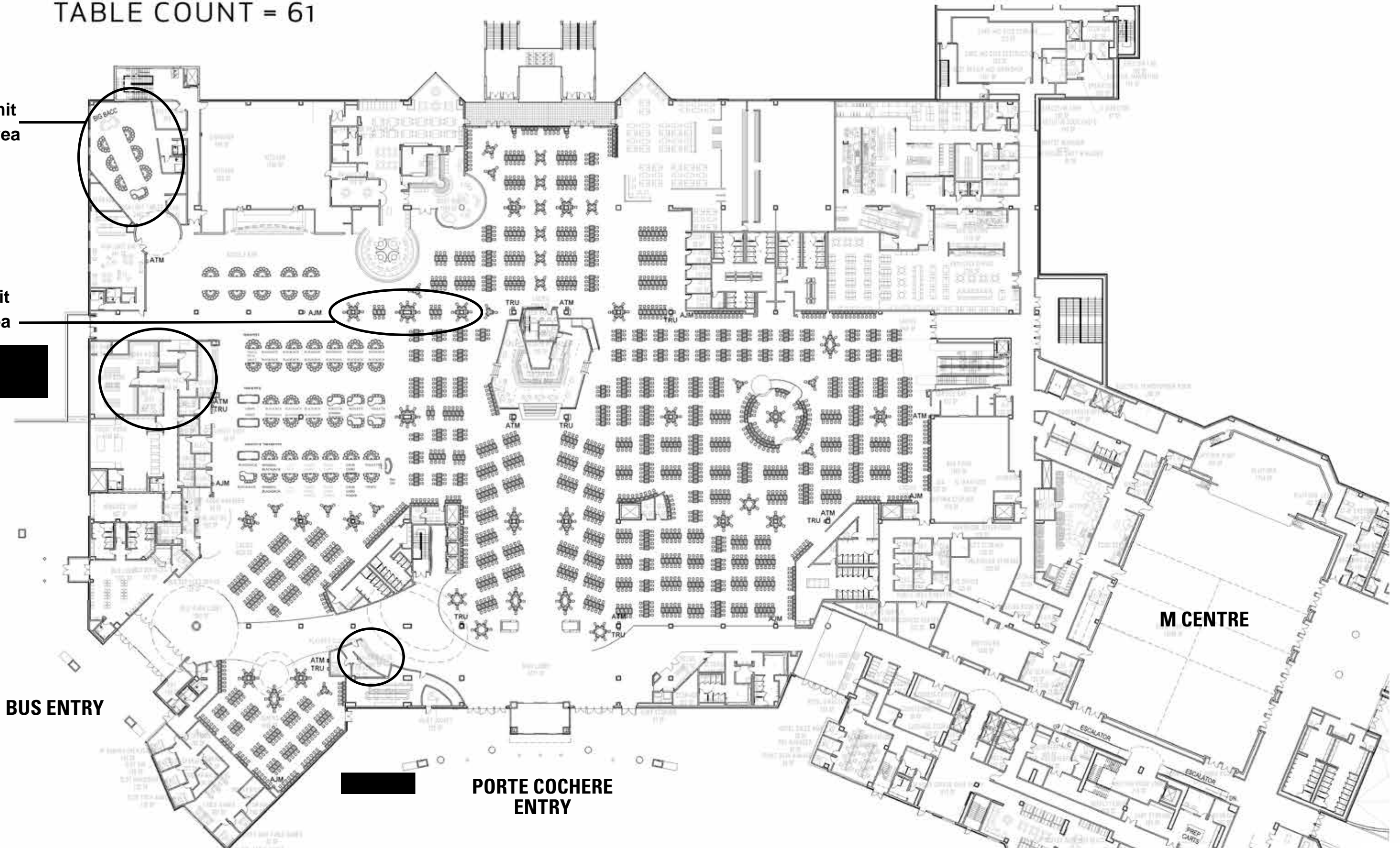
Slot Gaming Area:	71,800 SF
Table Gaming Area:	13,400 SF
HL Gaming Area:	1,100 SF
Restaurant/Bar:	48,300 SF
Services:	200 SF
Showroom:	8,600 SF
Conf./Meeting:	32,780 SF
Public Access:	16,120 SF
Back of House:	35,155 SF
Bldg. Support:	15,820 SF
Public Restrooms:	11,000 SF
BOH Restrooms:	1,730 SF
F & B Support:	13,500 SF
Stairs (Egress):	5,000 SF

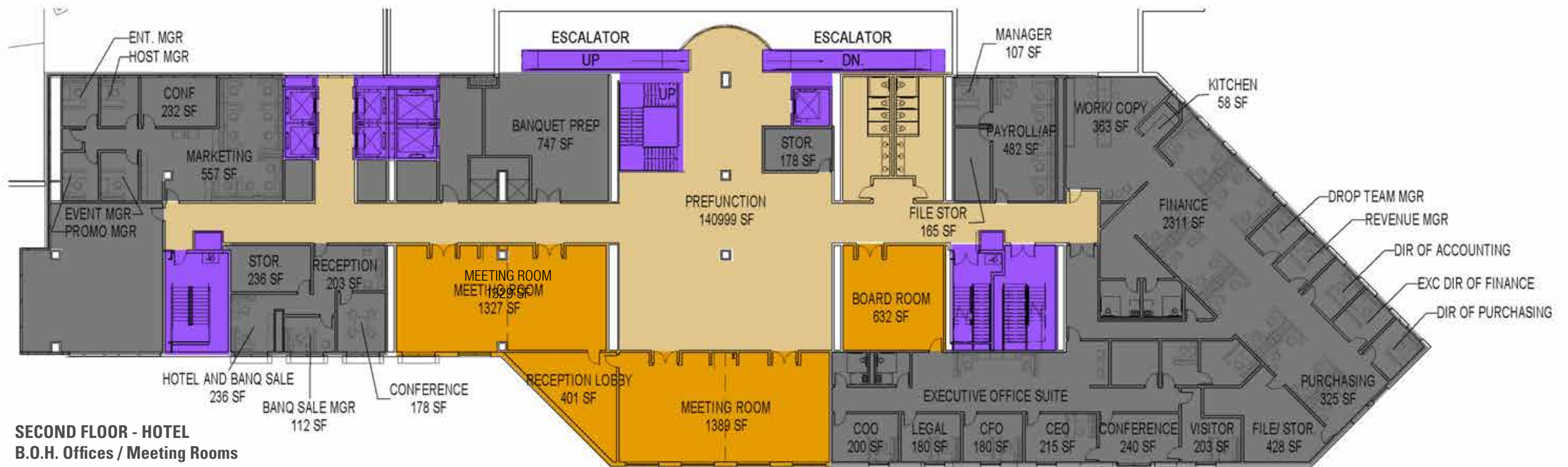


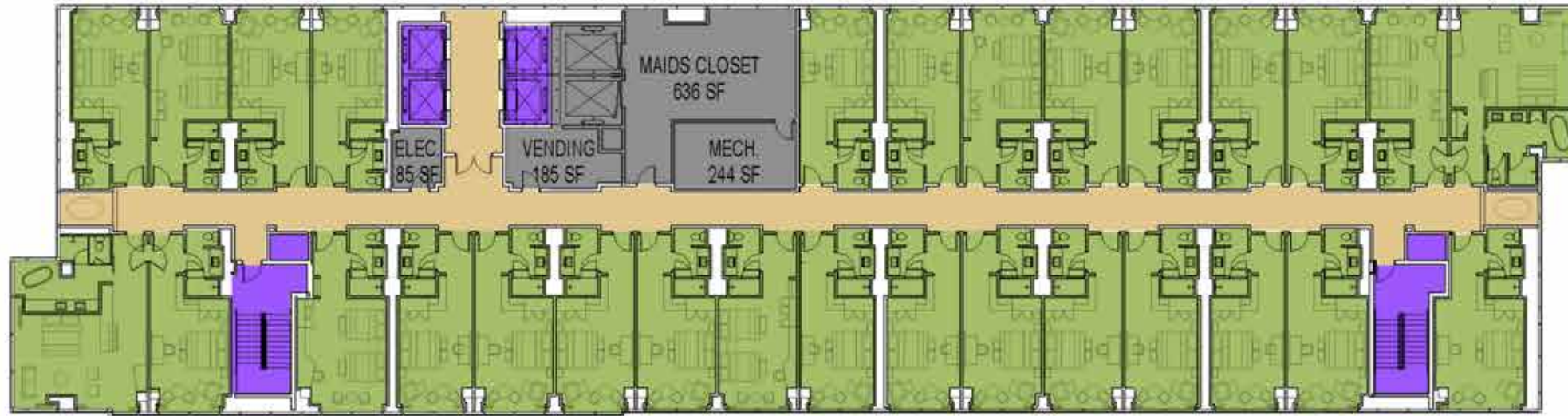
SLOT COUNT = 2150
TABLE COUNT = 61

High Limit
Table Area

High Limit
Slots Area





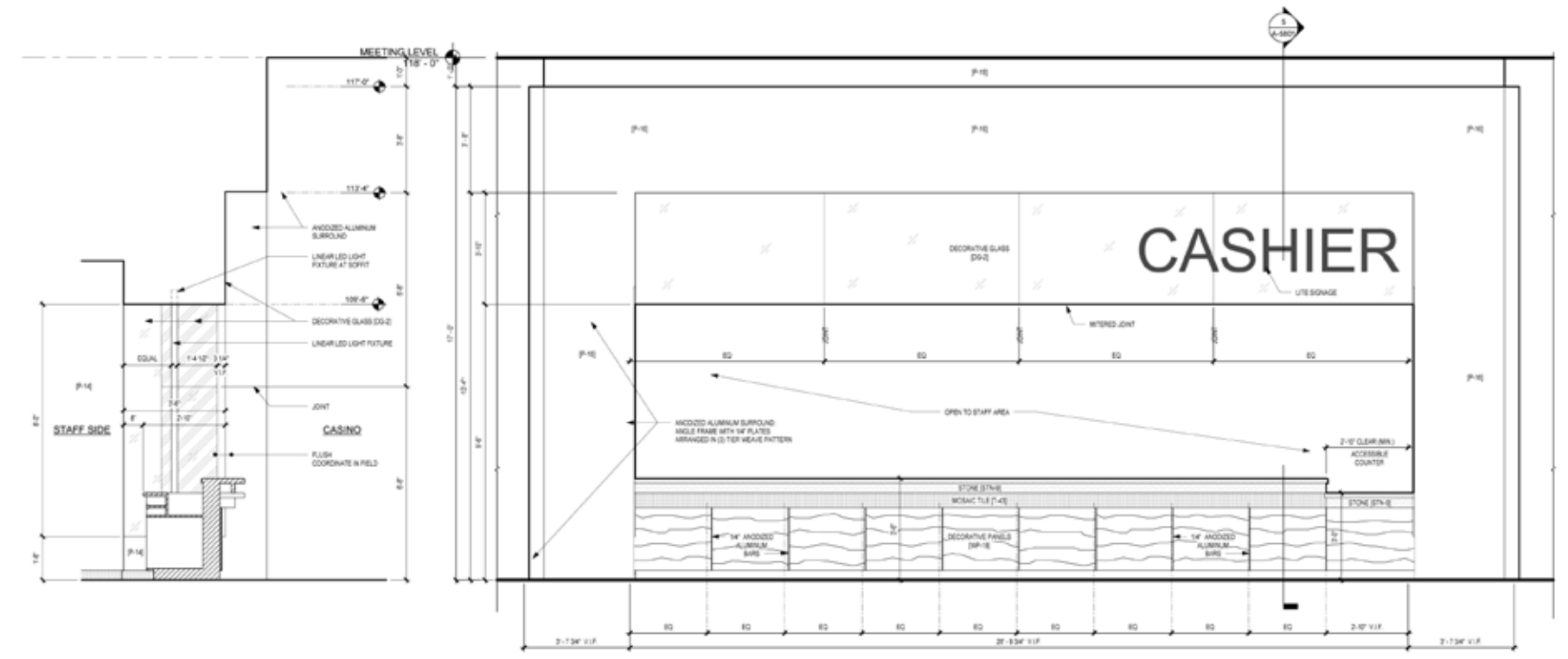


2 TYPICAL HOTEL ROOM FLOOR
3/32" = 1'-0"



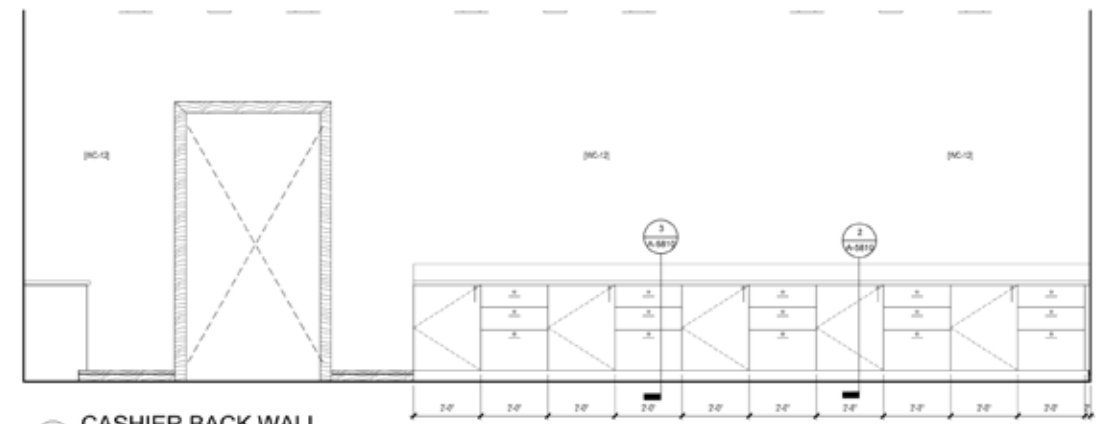
1 HOTEL POOL AND SPA LEVEL
3/32" = 1'-0"



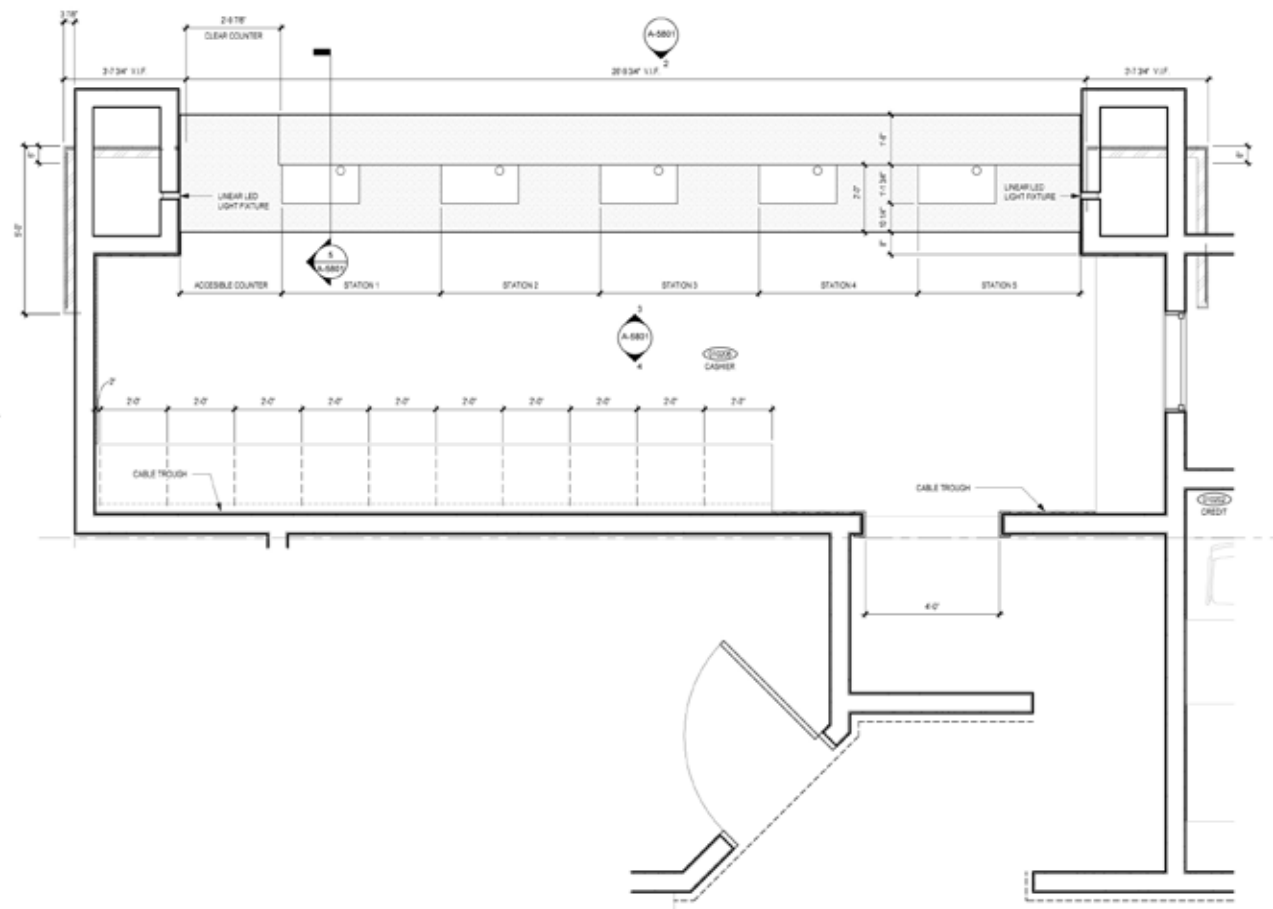


5 CASHIER SECTION / WEST ELEVATION
1/2" = 1'-0" (EAST ELEVATION OPPOSITE END)

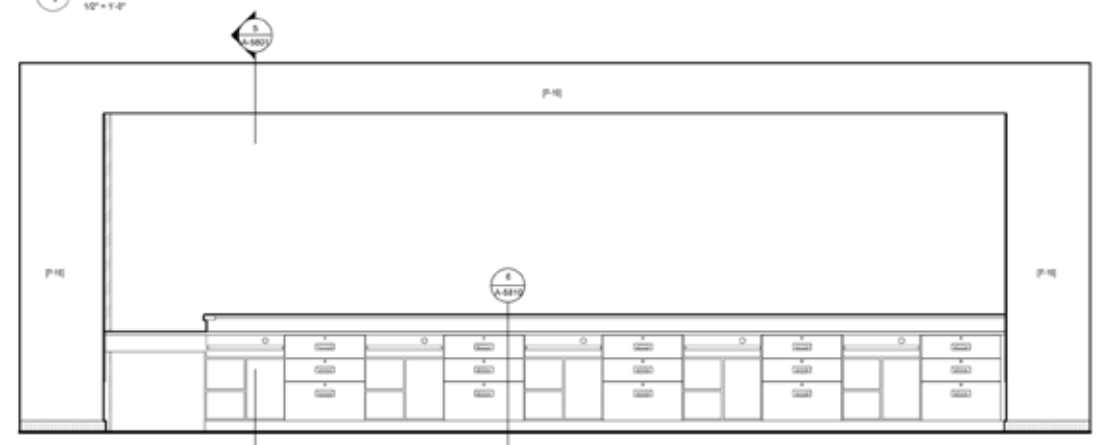
2 CASHIER SERVICE COUNTER - PUBLIC SIDE
1/2" = 1'-0"



4 CASHIER BACK WALL
1/2" = 1'-0"

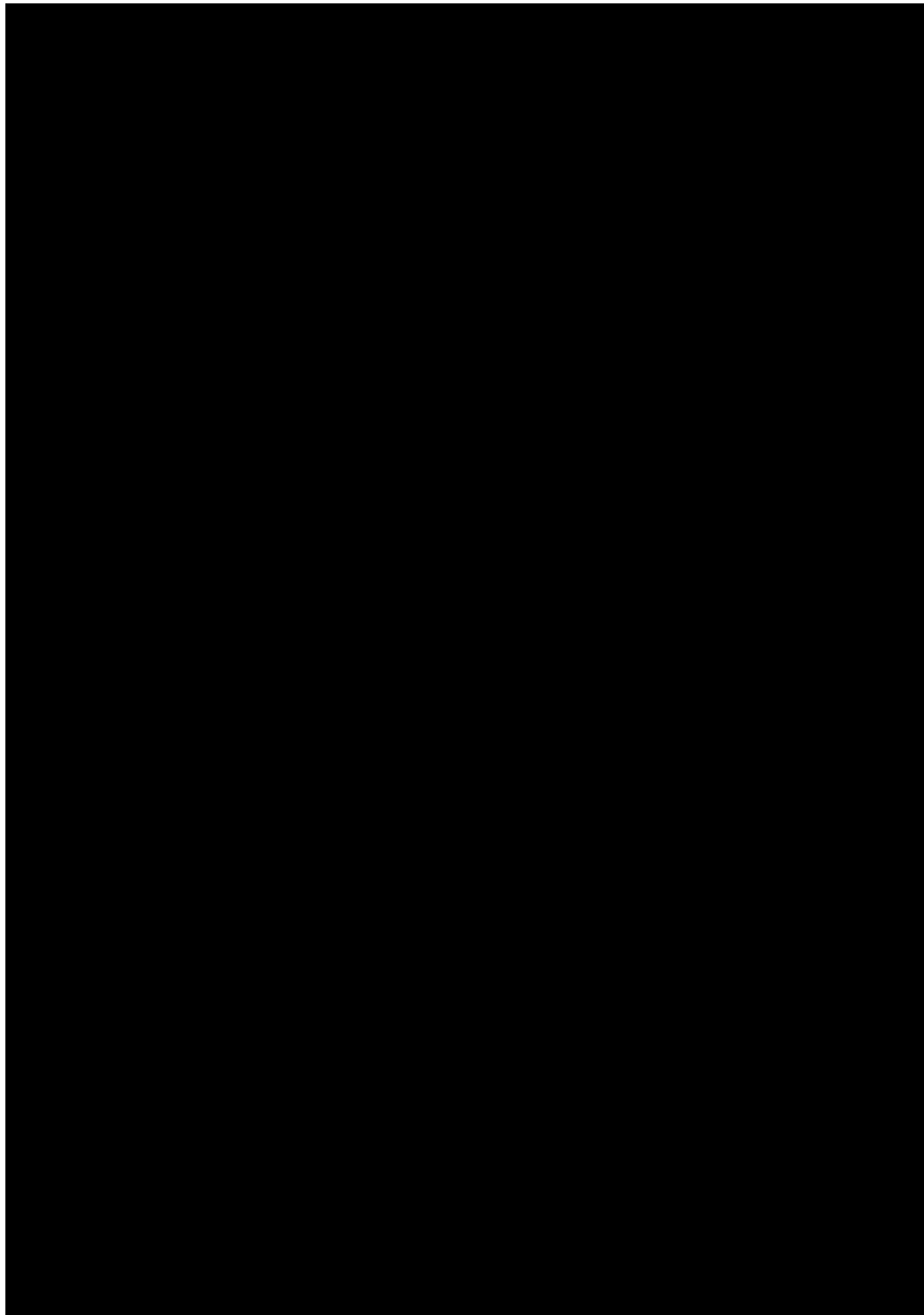


1 CASHIER ENLARGED PLAN
1/2" = 1'-0"



3 CASHIER SERVICE COUNTER - STAFF SIDE
1/2" = 1'-0"

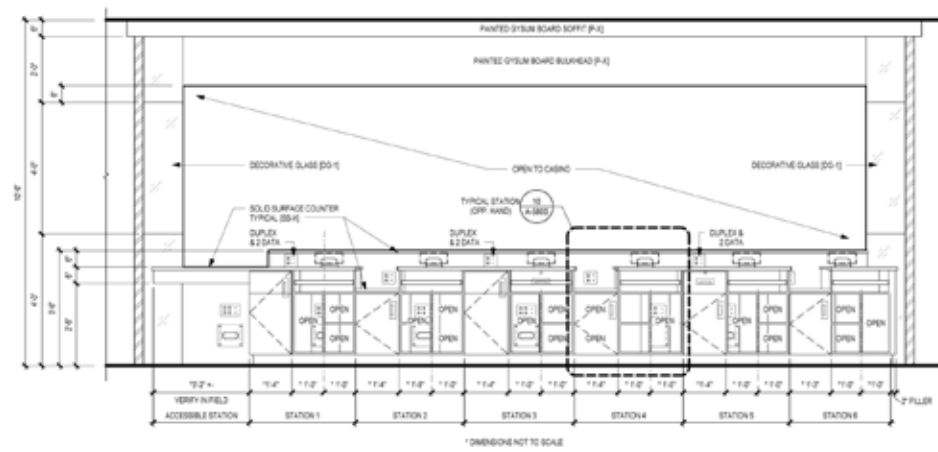
© 2012 KJLJ Architects, PC



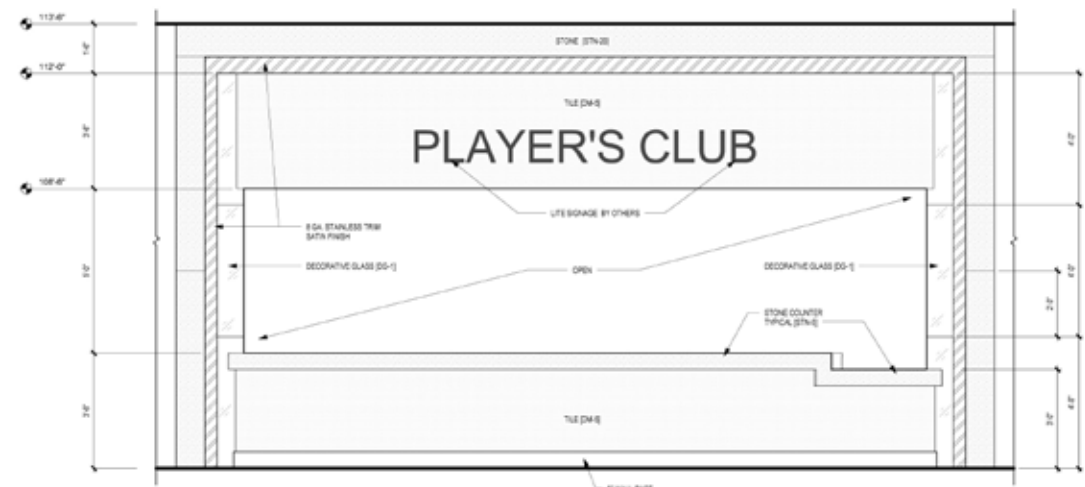
5 CASHIER STATIONS

TY
M

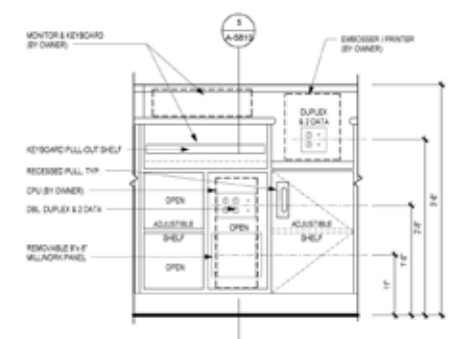




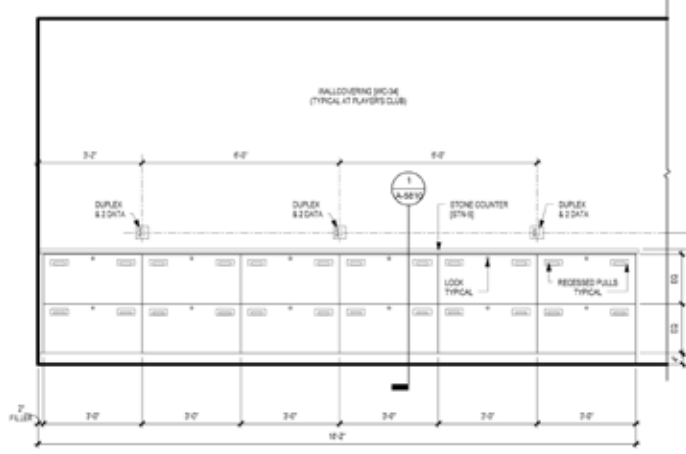
8 PLAYER'S CLUB SERVICE COUNTER ELEVATION - STAFF SIDE
1/2" = 1'-0"



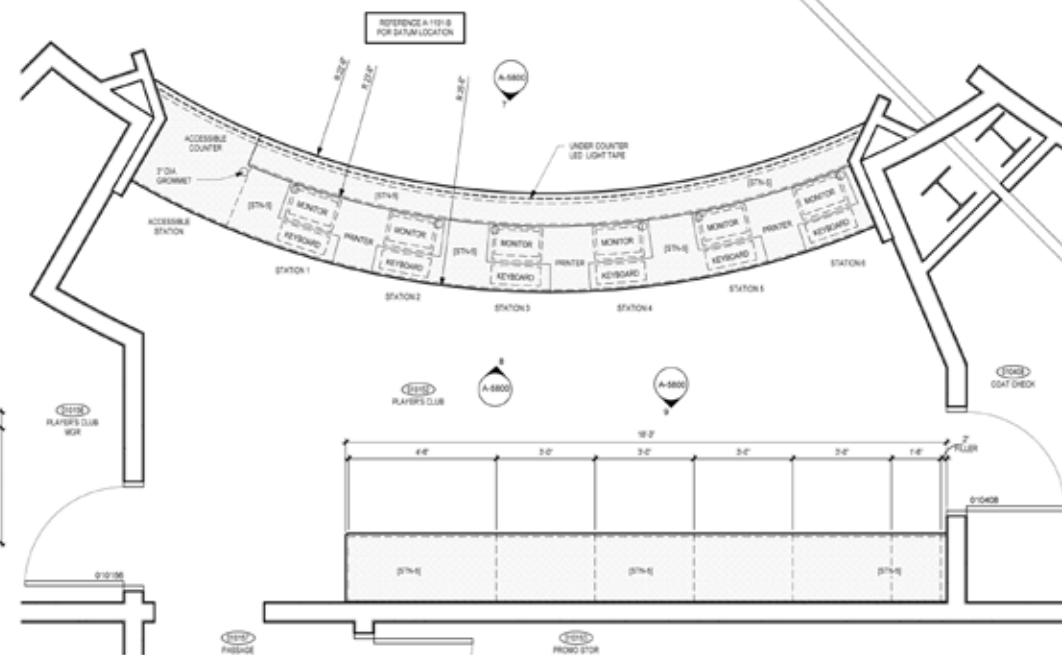
7 PLAYERS CLUB SERVICE COUNTER ELEVATION - PUBLIC SIDE
1/2" = 1'-0"



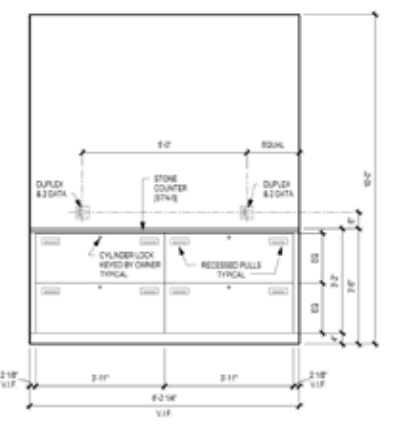
10 TYPICAL SERVICE STATION ELEVATION AT PRINTER
1" = 1'-0"



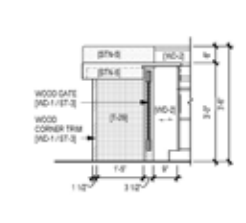
9 PLAYER'S CLUB BACK COUNTER
1/2" = 1'-0"



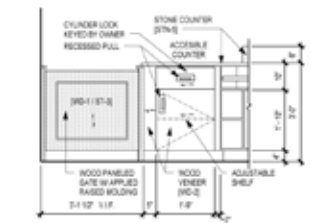
6 PLAYERS CLUB ENLARGED PLAN
1/2" = 1'-0"



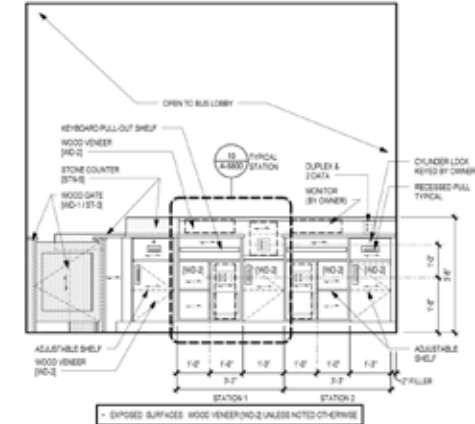
5 BUS SERVICES BACK COUNTER ELEVATION
1/2" = 1'-0"



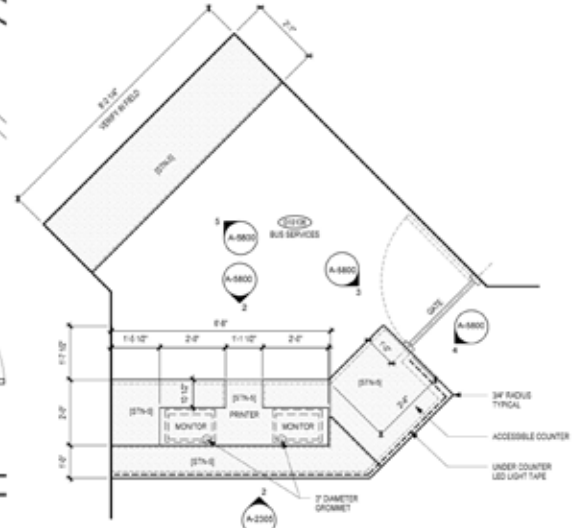
4 BUS SERVICES SIDE COUNTER ELEV.
1/2" = 1'-0"



3 BUS SERVICES COUNTER ELEVATION
1/2" = 1'-0"



2 BUS SERVICES COUNTER ELEVATION
1/2" = 1'-0"



1 BUS SERVICES ENLARGED PLAN
1/2" = 1'-0"