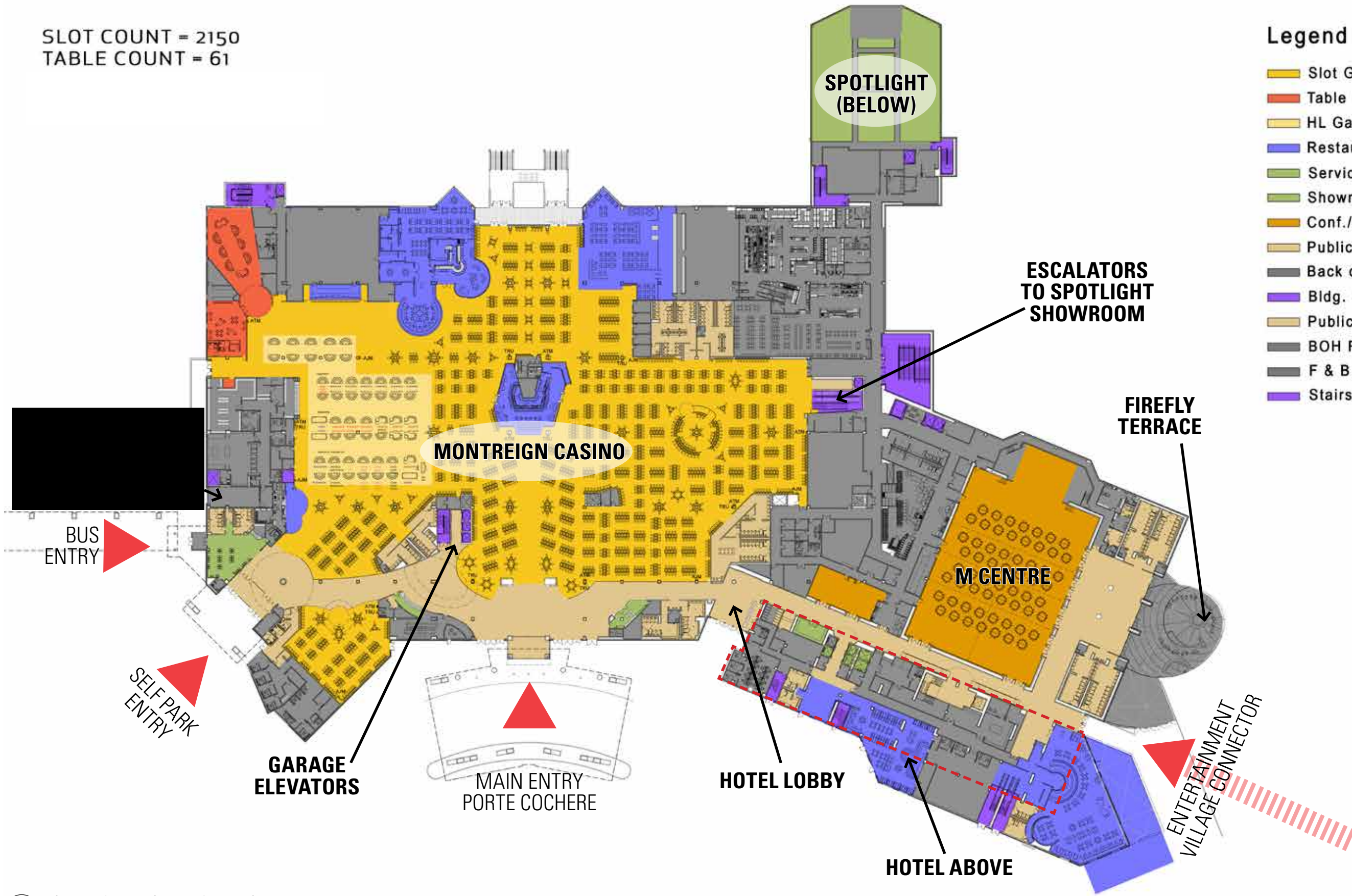
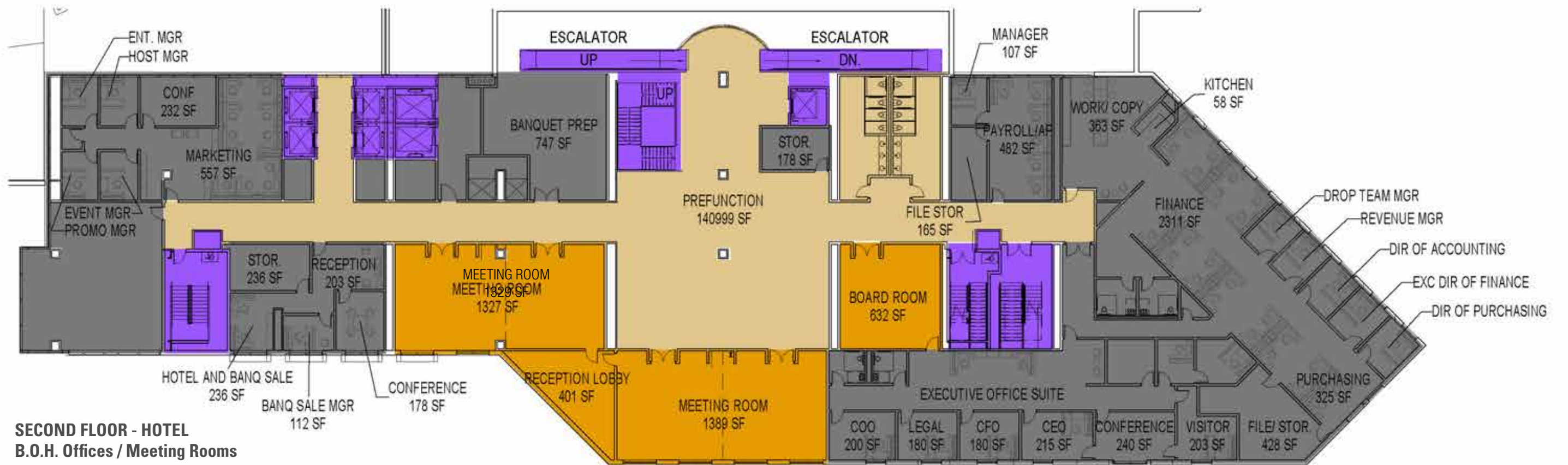


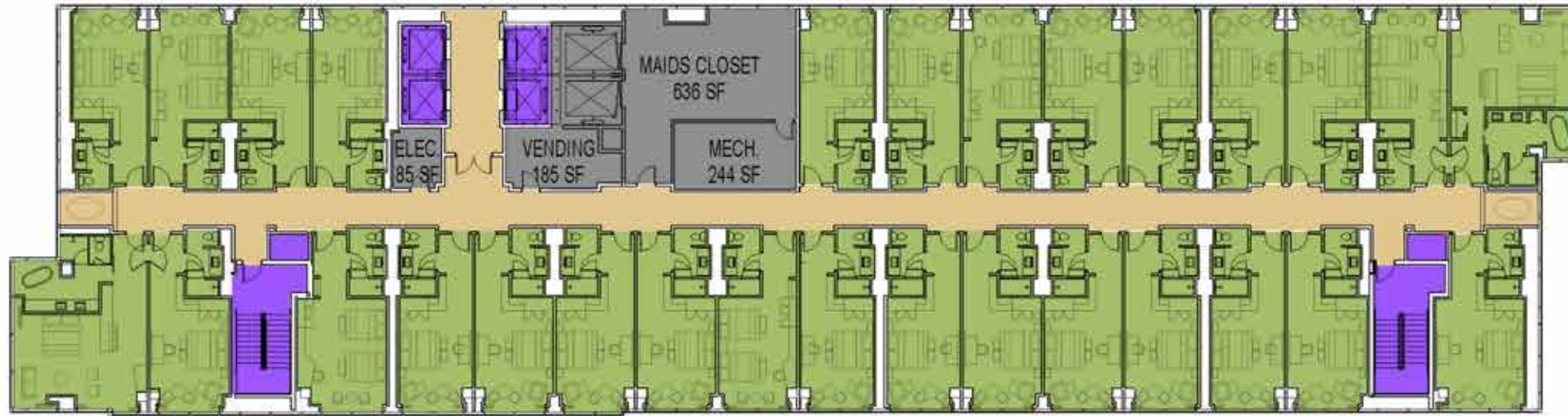
SLOT COUNT = 2150
TABLE COUNT = 61

Legend and Area Summary

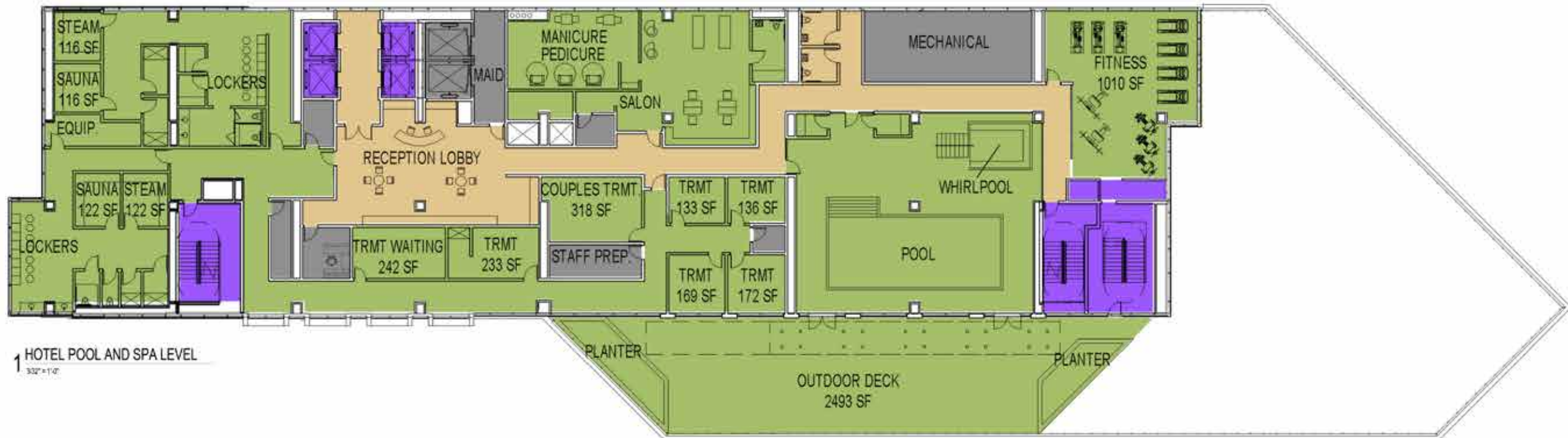
Slot Gaming Area:	71,800 SF
Table Gaming Area:	13,400 SF
HL Gaming Area:	1,100 SF
Restaurant/Bar:	48,300 SF
Services:	200 SF
Showroom:	8,600 SF
Conf./Meeting:	32,780 SF
Public Access:	16,120 SF
Back of House:	35,155 SF
Bldg. Support:	15,820 SF
Public Restrooms:	11,000 SF
BOH Restrooms:	1,730 SF
F & B Support:	13,500 SF
Stairs (Egress):	5,000 SF





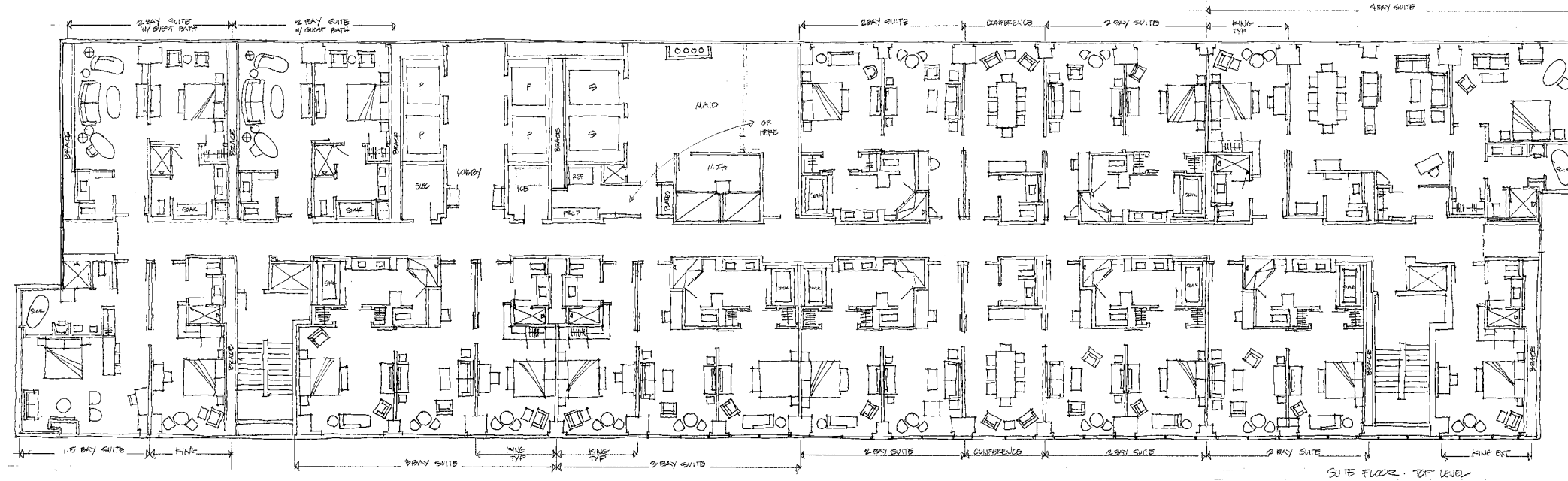


2 TYPICAL HOTEL ROOM FLOOR
3/32" = 1'-0"



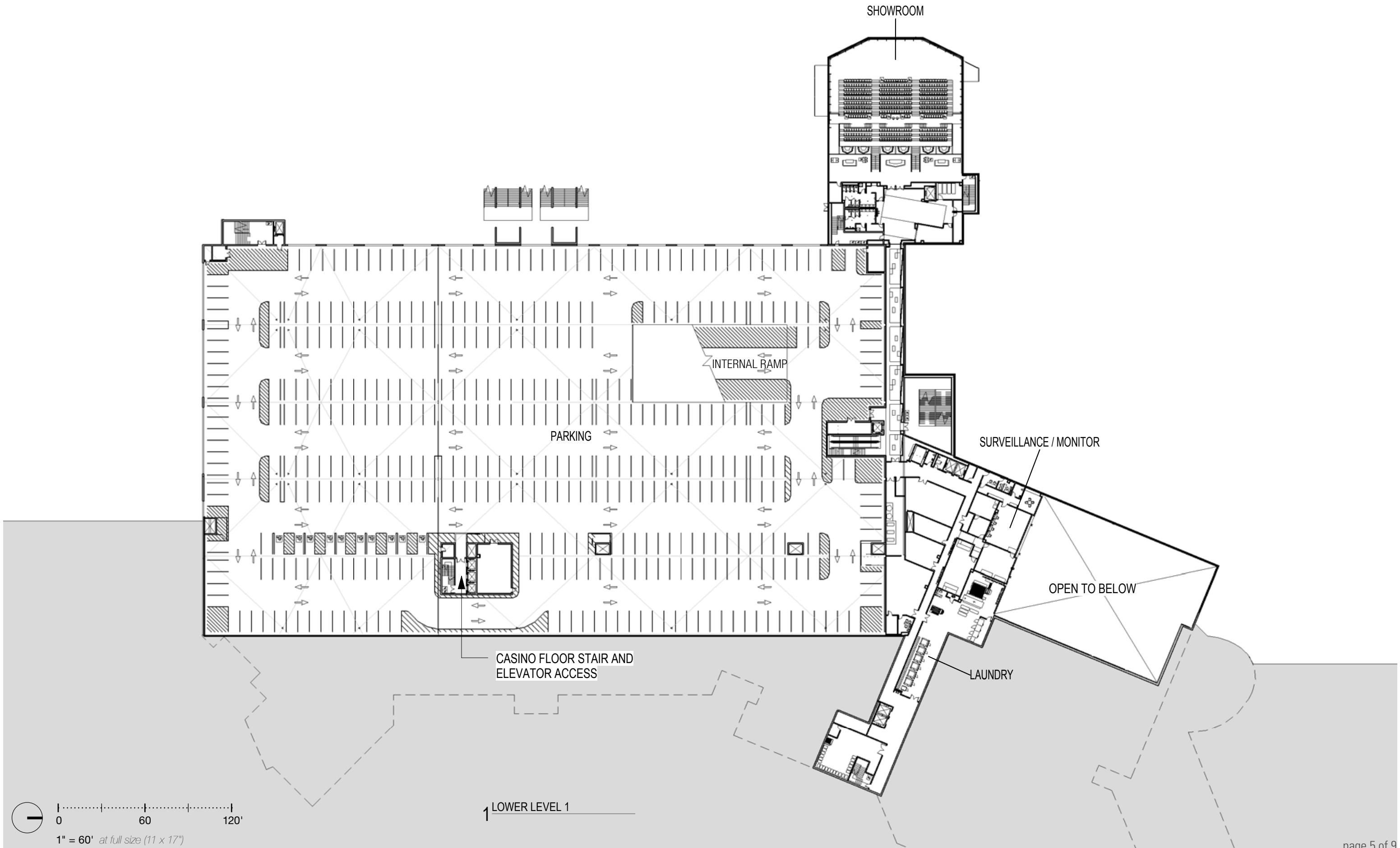
1 HOTEL POOL AND SPA LEVEL
3/32" = 1'-0"





1 PENTHOUSE FLOOR





SHOWROOM

INTERNAL RAMP

PARKING

SURVEILLANCE / MONITOR

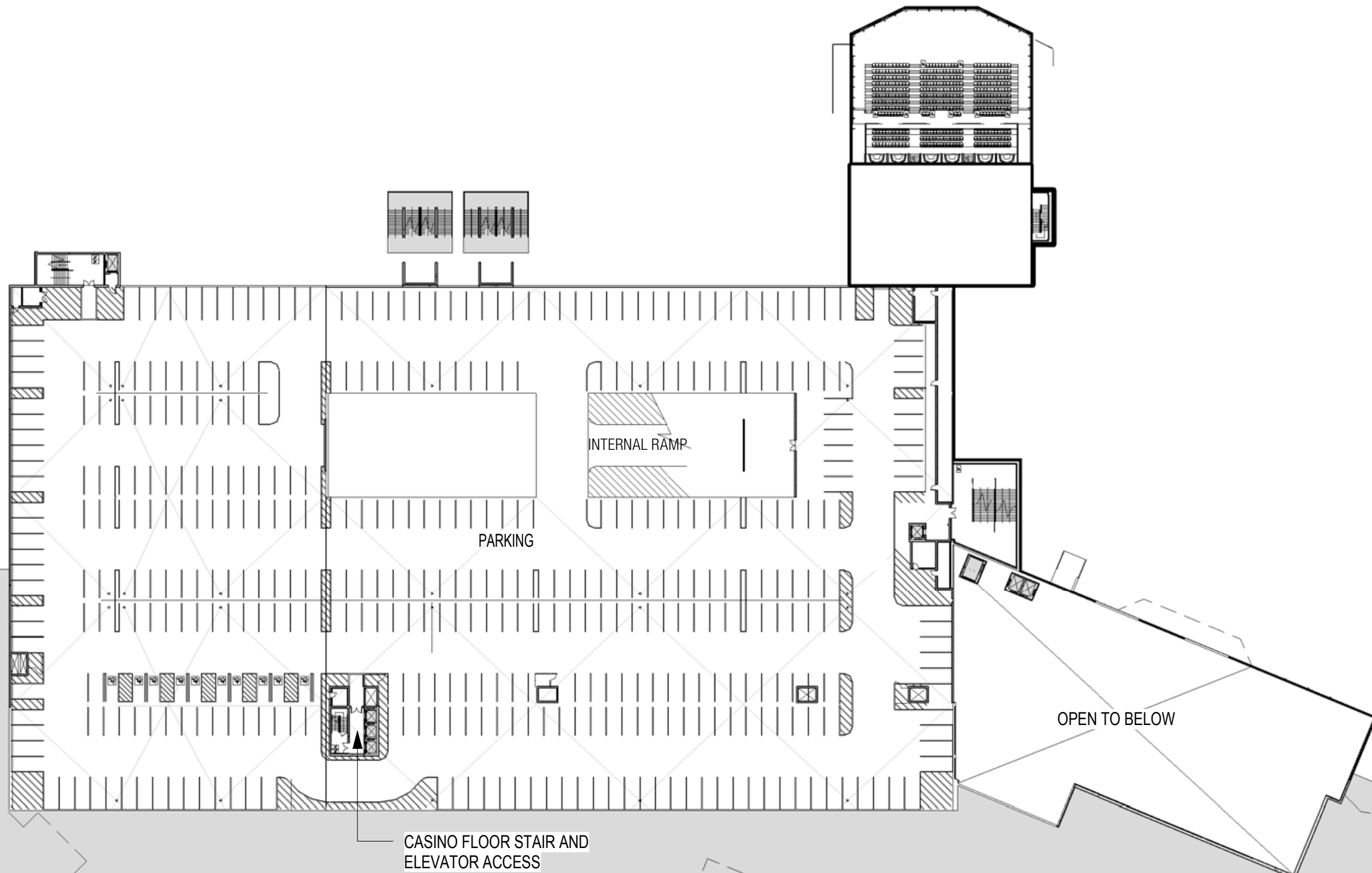
OPEN TO BELOW

CASINO FLOOR STAIR AND ELEVATOR ACCESS

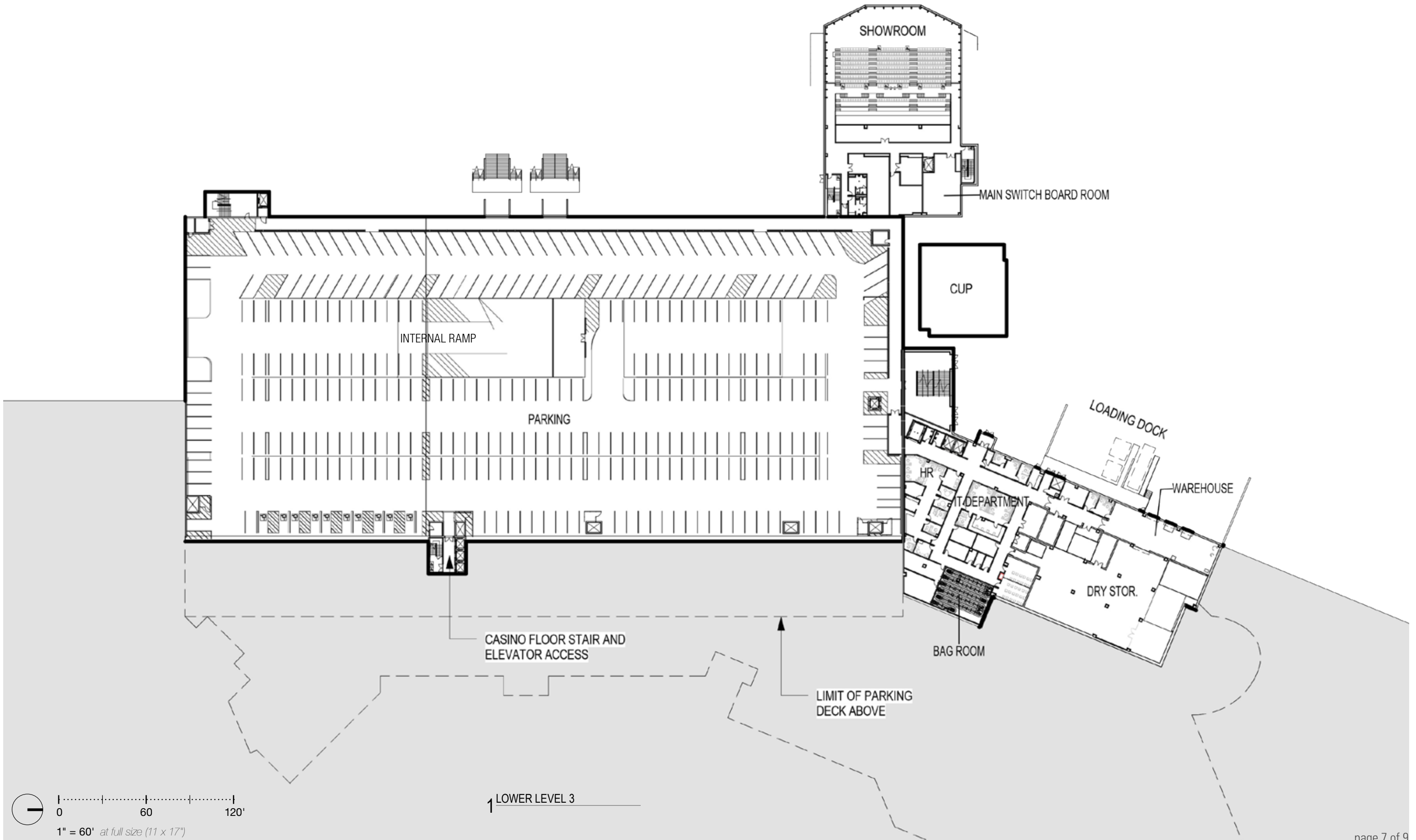
LAUNDRY

1 LOWER LEVEL 1

0 60 120'
1" = 60' at full size (11 x 17")

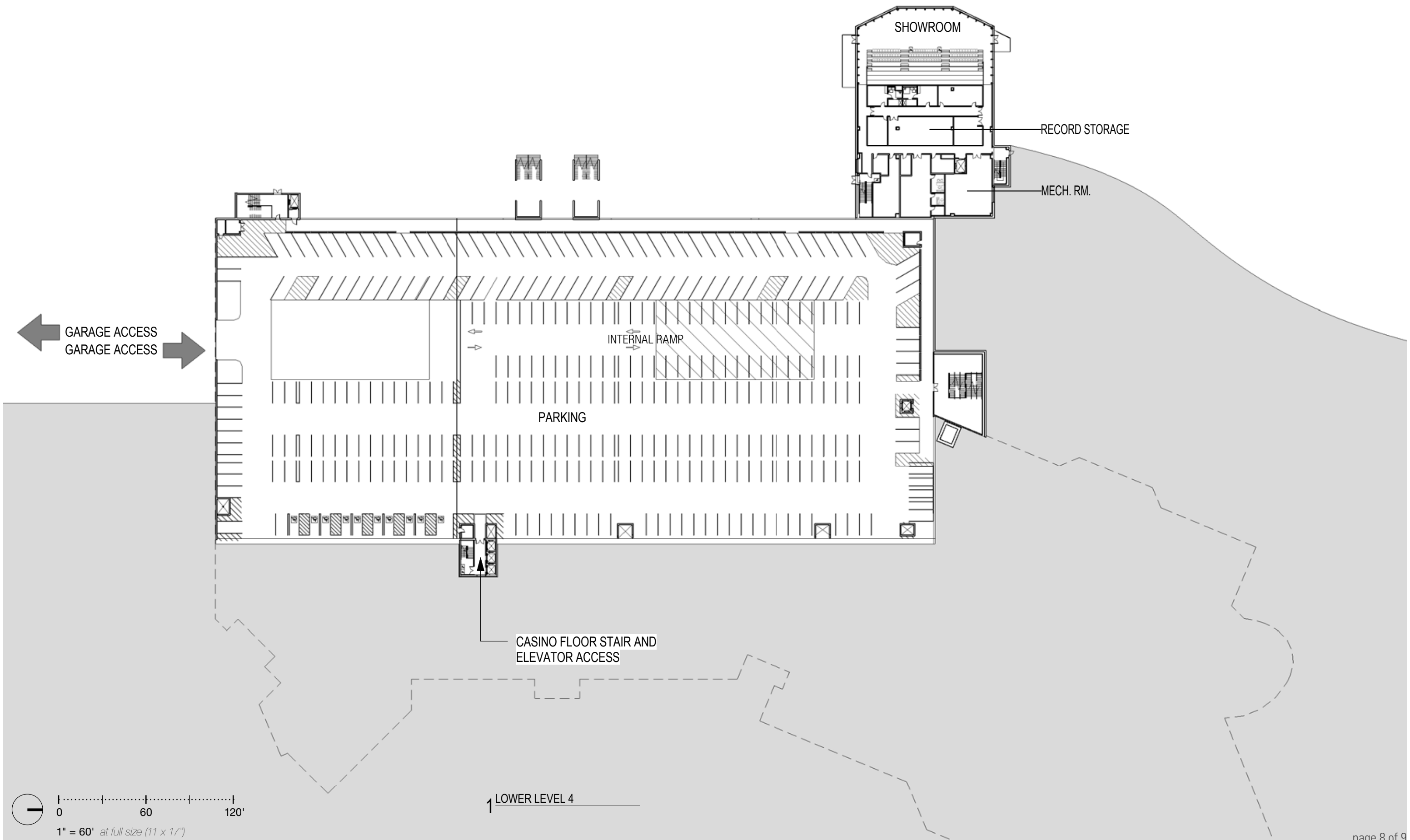


1 LOWER LEVEL 2



0 60 120'
 1" = 60' at full size (11 x 17")

1 LOWER LEVEL 3



0 60 120'
 1" = 60' at full size (11 x 17")

1 LOWER LEVEL 4

V.I.P. ROOM

COUNT

TRAINING RM

1 SIMULCAST LEVEL



1" = 60' at full size (11 x 17")