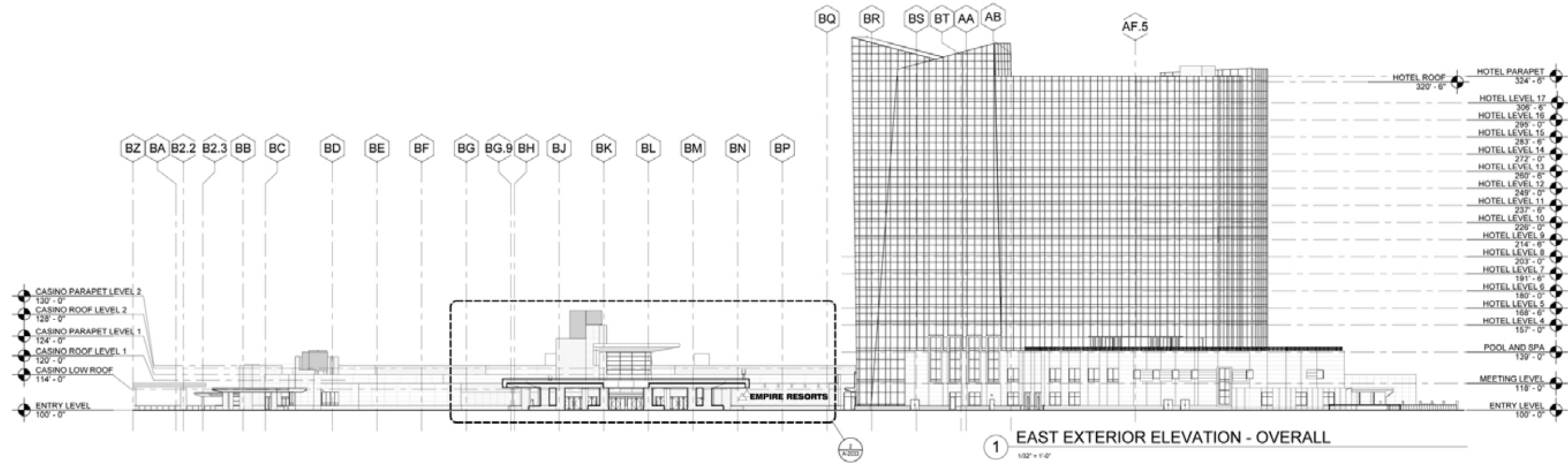
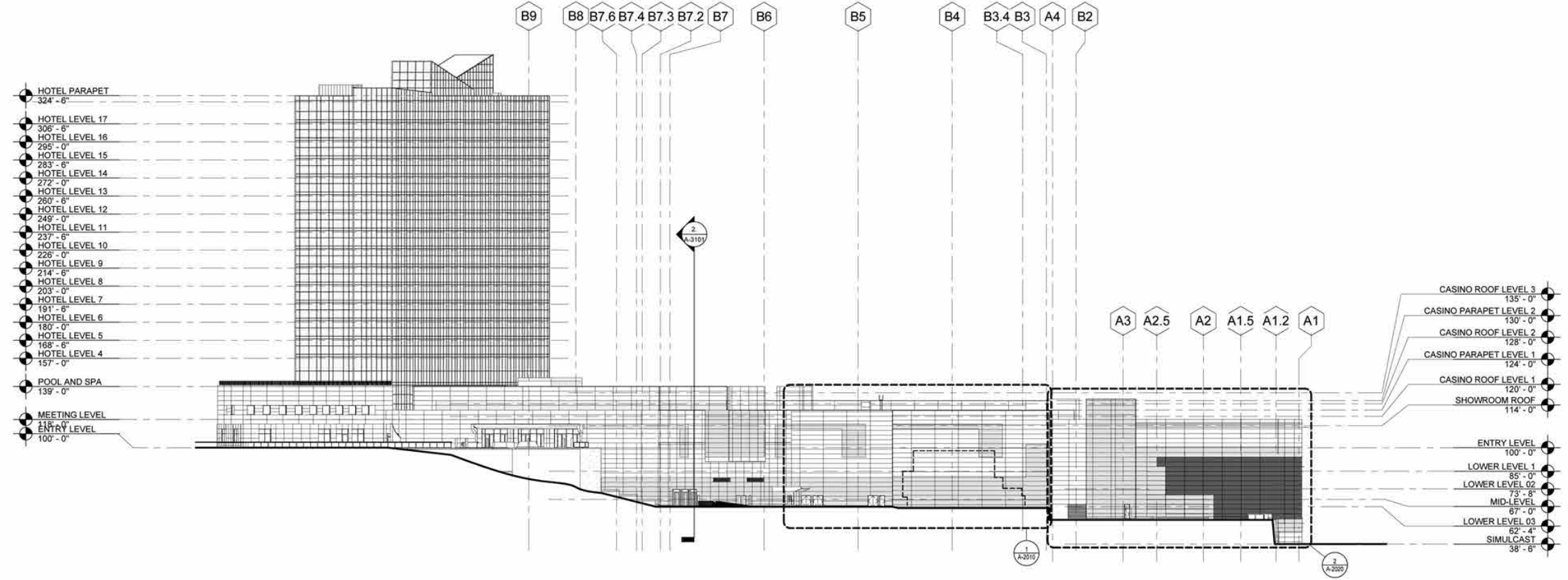


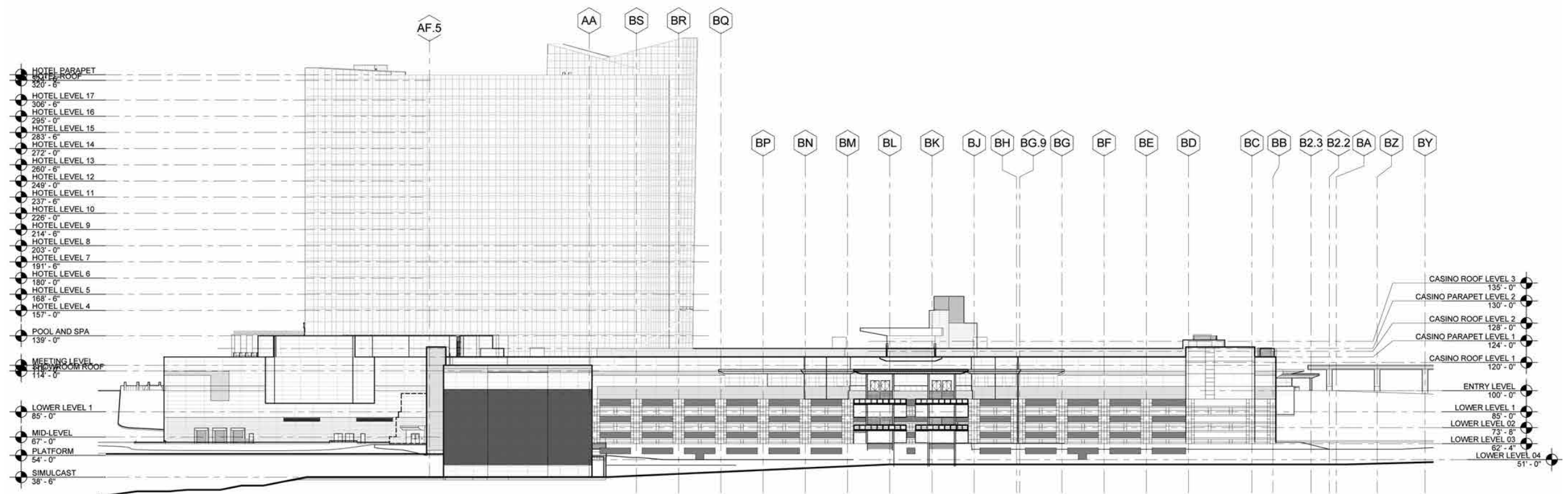
2 SOUTHEAST EXTERIOR ELEVATION - OVERALL  
1/32" = 1'-0"



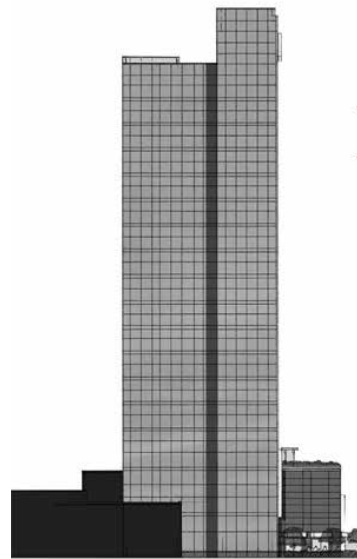
1 EAST EXTERIOR ELEVATION - OVERALL  
1/32" = 1'-0"



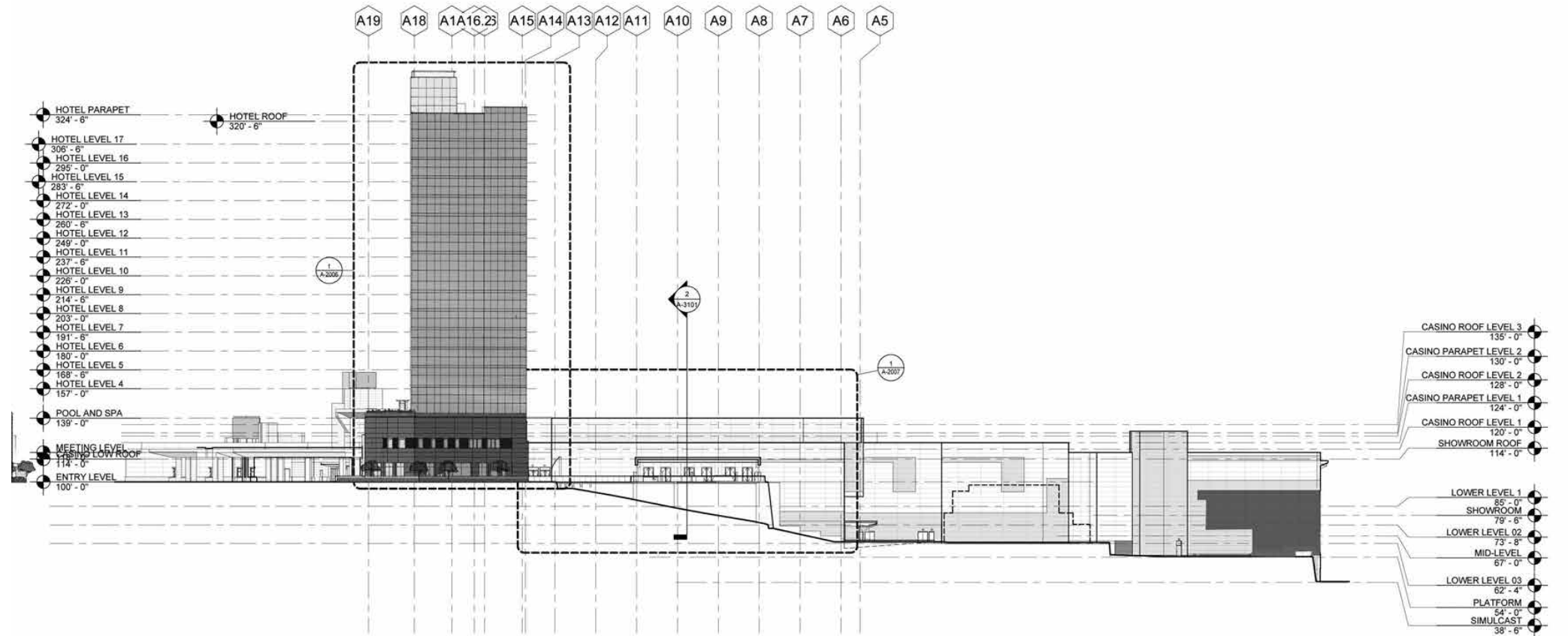
2 NORTH EXTERIOR ELEVATION - OVERALL  
1/32" = 1'-0"



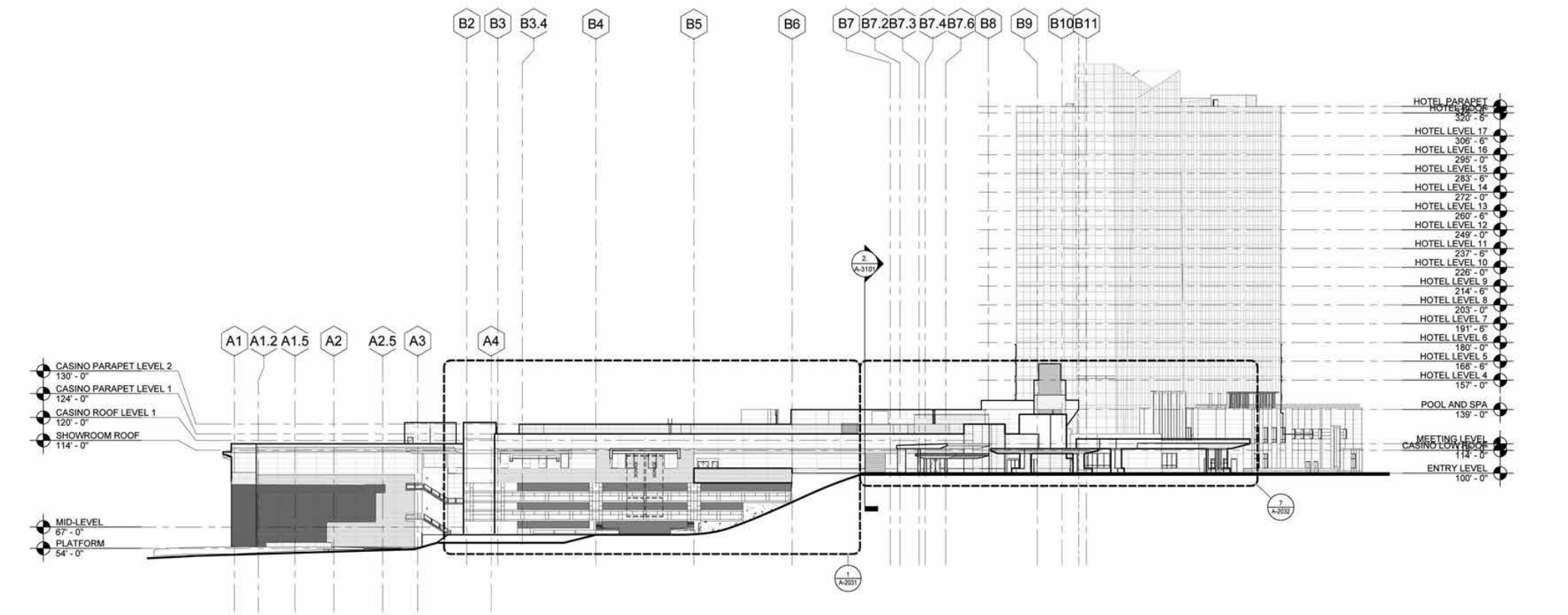
1 WEST EXTERIOR ELEVATION - OVERALL  
1/32" = 1'-0"



3 **SOUTHWEST EXTERIOR ELEVATION - OVERALL TOWER**



2 **NORTHEAST EXTERIOR ELEVATION - OVERALL**



1 **SOUTH EXTERIOR ELEVATION - OVERALL**