





OPEN VIP SEATING AREA HAS CLEAR VIEW OF STAGE AND DANCE FLOOR. THE VINYL WALLCOVERING CURVED WALL WILL INCLUDE A 48" LONG x 18" TALL CURVED MILLWORK FEATURE ELEMENT FINISHED IN SOLID WOOD MOSAIC-LIKE PIECES AND A CURVED METAL FRAMED BACKLIT ACRYLIC LIGHT BOX. THIS ELEMENT WILL HAVE 2 SURFACE MOUNTED FLATSCREENS.

5 ENTERTAINMENT BAR 5

3/64" = 1'-0"

WALL SCONES TO BE CUSTOM HEIGHT OF 72"x4.3" WIDE - 13 TOTAL  
<http://www.hubbardforforge.com/ProductInfo.cfm?Design=21769>



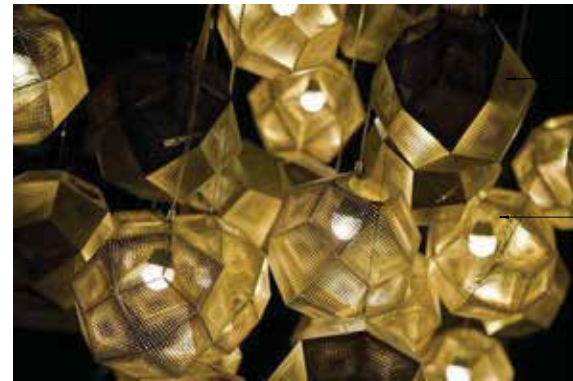
THE RADUS SOFFIT ABOVE BAR WILL INCLUDE A 1'-0" TALL x 19'-0" LONG SPORTSNEWS TICKER. FIBERON SOFFIT FINISH IS PAINTED GYPSUM BOARD WITH MOZ METAL ACCENT.

CURVED BACK BAR WILL HAVE MATCHING GRANITE TOP AND TWO ROWS OF 18" TALL x 30" LONG BACKLIT ACRYLIC DWEL CROSS CROSS BACK PANELS WITH GLASS LIQUOR DISPLAY SHELVES AND WALL BRACKET MOUNTED FLAT SCREEN TV'S  
<http://nevedesign.com/Casinos09.html>

CURVED BAR IS BLACK BRONZE/SILVER VENEER GRANITE SLAB COUNTER (CJ) HAS CONCRETE SAMPLE WITH MOZ DECORATIVE METAL SHEET SET ALED AS 19 PANELS WITH RECESSED BRONZE PURSE HOOK BETWEEN EACH PANEL. STONE STEP FOOTRAIL WITH UNDER EDGE STRIP LIGHT. BAR SEATS IS.

2 ENTERTAINMENT BAR 2

3/64" = 1'-0"



OPEN VIP SEATING AREA HAS CLEAR VIEW OF STAGE AND DANCE FLOOR. THE VINYL WALLCOVERING CURVED WALL WILL INCLUDE A 48" LONG x 18" TALL CURVED MILLWORK FEATURE ELEMENT FINISHED IN SOLID WOOD MOSAIC-LIKE PIECES AND A CURVED METAL FRAMED BACKLIT ACRYLIC LIGHT BOX. THIS ELEMENT WILL HAVE 2 SURFACE MOUNTED FLATSCREENS.

PAINTED GYPSUM BOARD SOFFITS CUT OUT FOR PENDANT LIGHTS. REMAINING CEILING IS ACT. MOZ METAL AND ACRYLIC CEILING HUNG COLOR CHANGING LED LIT HORIZONTAL ENTRY SIGN EXTENDING OUT INTO THE CORRIDOR.

4 ENTERTAINMENT BAR - PENDANT LIGHT

1/16" = 1'-0"



ADJACENT TO ENTRY IS LOW WALL WITH FULL LENGTH GLASS WINDOWS. WALL WILL HAVE STAINED WOOD CAP WITH STRIP ACCENT LIGHTING DOWN OVER FACADE OF MOZ METAL AND WOOD BASE. WINDOW HAS PERIMETER PORTHOLE OF RECLAIMED STACKED WOOD PREFAB PANEL.  
<https://www.archsystems.com/WFFSND02.zipx>

WALL FINISHES WILL BE VINYL WALLCOVERING AND PREFABRICATED WOOD MOSAIC PANELS. FLOOR FINISHES WILL BE PREMIUM WOOD GRAIN VINYL FLOORING.

3 ENTERTAINMENT BAR 9

1/16" = 1'-0"



PAINTED GYPSUM BOARD SOFFITS CUT OUT FOR PENDANT LIGHTS. REMAINING CEILING IS ACT. MOZ METAL AND ACRYLIC CEILING HUNG COLOR CHANGING LED LIT HORIZONTAL ENTRY SIGN EXTENDING OUT INTO THE CORRIDOR.

HOST STATION WILL BE GRANITE SLAB TO MATCH BAR TOP WITH STAINED WOOD AND VENEER CABINETRY AND 1" THICK RUBBY ACRYLIC FACADE. METALIC GOLD MESH PENDANT LIGHTS WILL BE LOCATED ABOVE HOST STATION.

ADJACENT TO ENTRY IS LOW WALL WITH FULL LENGTH GLASS WINDOWS. WALL WILL HAVE STAINED WOOD CAP WITH STRIP ACCENT LIGHTING DOWN OVER FACADE OF MOZ METAL AND WOOD BASE. WINDOW HAS PERIMETER PORTHOLE OF RECLAIMED STACKED WOOD PREFAB PANEL.  
<https://www.archsystems.com/WFFSND02.zipx>

WALL FINISHES WILL BE VINYL WALLCOVERING AND PREFABRICATED WOOD MOSAIC PANELS. FLOOR FINISHES WILL BE PREMIUM WOOD GRAIN VINYL FLOORING.

ENTRY WILL HAVE A PAIR OF FULL LENGTH GLASS DOORS AND SIDELIGHTS WITH ELONGATED DECORATIVE PULLS EACH SIDE.

ENTRY WALL WINDOW BOX HAS SIGNOGRAPHIC LIGHT BOX FRAMED IN METAL CASING AND RECLAIMED STACKED WOOD PREFAB PANEL.

1 ENTERTAINMENT BAR 1

3/64" = 1'-0"

© 2012 J.C.J. Architecture, PC

OPEN VIP SEATING AREA HAS CLEAR VIEW OF STAGE AND DANCE FLOOR. THE VINYL WALLCOVERING CURVED WALL WILL INCLUDE A 48" LONG 4" TALL CURVED MILLWORK FEATURE ELEMENT FINISHED IN SOLID WOOD MOSAIC-LIKE PIECES AND A CURVED METAL FRAMED BACKLIT ACRYLIC LIGHT BOX. THIS ELEMENT WILL HAVE 2 SURFACE MOUNTED FLATSCREENS.

WALL FINISHES WILL BE VINYL WALLCOVERING AND PREFABRICATED WOOD MOSAIC PANELS. FLOOR FINISHES WILL BE PREMIUM WOOD GRAIN VINYL FLOORING.



OPEN VIP SEATING AREA HAS CLEAR VIEW OF STAGE AND DANCE FLOOR. THE VINYL WALLCOVERING CURVED WALL WILL INCLUDE A 48" LONG 4" TALL CURVED MILLWORK FEATURE ELEMENT FINISHED IN SOLID WOOD MOSAIC-LIKE PIECES AND A CURVED METAL FRAMED BACKLIT ACRYLIC LIGHT BOX. THIS ELEMENT WILL HAVE 2 SURFACE MOUNTED FLATSCREENS.

THE RADIUS SOFFIT ABOVE BAR WILL INCLUDE A 1'-0" TALL X 75'-0" LONG SPORTSNEWS TICKER RIBBON. SOFFIT FINISH IS PAINTED GYPSUM BOARD WITH MOZ METAL ACCENT.



THE RADIUS SOFFIT ABOVE BAR WILL INCLUDE A 1'-0" TALL X 75'-0" LONG SPORTSNEWS TICKER RIBBON. SOFFIT FINISH IS PAINTED GYPSUM BOARD WITH MOZ METAL ACCENT.

2 ENTERTAINMENT BAR 3  
3/64" = 1'-0"

4 ENTERTAINMENT BAR - TICKER RIBBON  
1/16" = 1'-0"

1 ENTERTAINMENT BAR 4  
3/64" = 1'-0"



WALL FINISHES WILL BE VINYL WALLCOVERING AND PREFABRICATED WOOD MOSAIC PANELS. FLOOR FINISHES WILL BE PREMIUM WOOD GRAIN VINYL FLOORING.

THE RADIUS SOFFIT ABOVE BAR WILL INCLUDE A 1'-0" TALL X 75'-0" LONG SPORTSNEWS TICKER RIBBON. SOFFIT FINISH IS PAINTED GYPSUM BOARD WITH MOZ METAL ACCENT.

OPEN VIP SEATING AREA HAS CLEAR VIEW OF STAGE AND DANCE FLOOR. THE VINYL WALLCOVERING CURVED WALL WILL INCLUDE A 48" LONG 4" TALL CURVED MILLWORK FEATURE ELEMENT FINISHED IN SOLID WOOD MOSAIC-LIKE PIECES AND A CURVED METAL FRAMED BACKLIT ACRYLIC LIGHT BOX. THIS ELEMENT WILL HAVE 2 SURFACE MOUNTED FLATSCREENS.



PAINTED GYPSUM BOARD SOFFITS CUT OUT FOR PENDANT LIGHTS. REMAINING CEILING IS A 3/4" MOULDING ACRYLIC CEILING HUNG COLOR CHANGING LED LIT HORIZONTAL ENTRY SIGN EXTENDING OUT INTO THE CORRIDOR.

5 ENTERTAINMENT BAR - PENDANT LIGHT FIXTURE  
1/16" = 1'-0"

1 ENTERTAINMENT BAR 4  
3/64" = 1'-0"

3 ENTERTAINMENT BAR - WALL SCONCE  
1/16" = 1'-0"

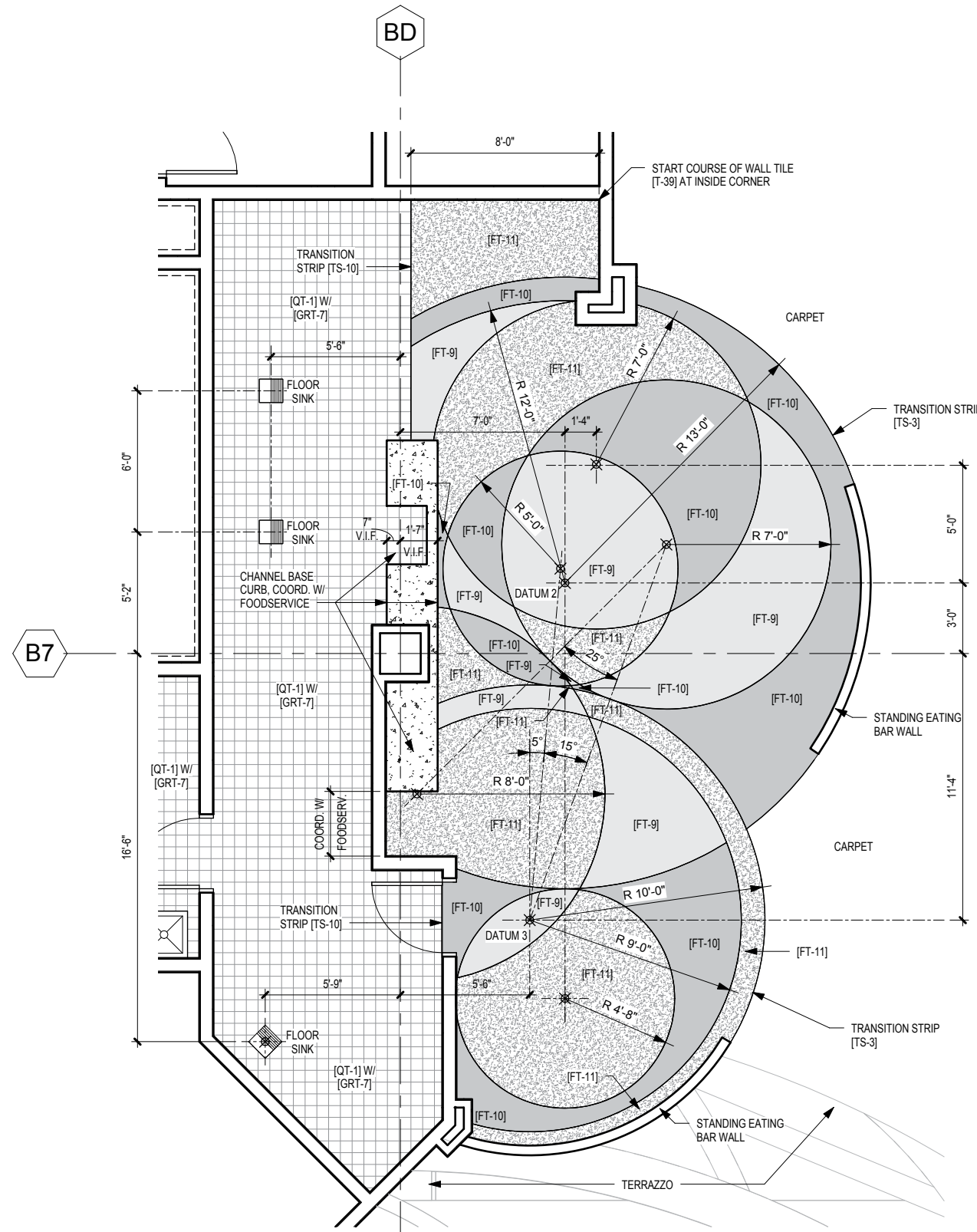
6 ENTERTAINMENT BAR 9A  
1/16" = 1'-0"

WALL SCONCES TO BE CUSTOM HEIGHT OF 72"x4.0" WIDE - 13 TOTAL  
<http://www.hubbardtorge.com/ProductInfo.cfm?Design=217650>

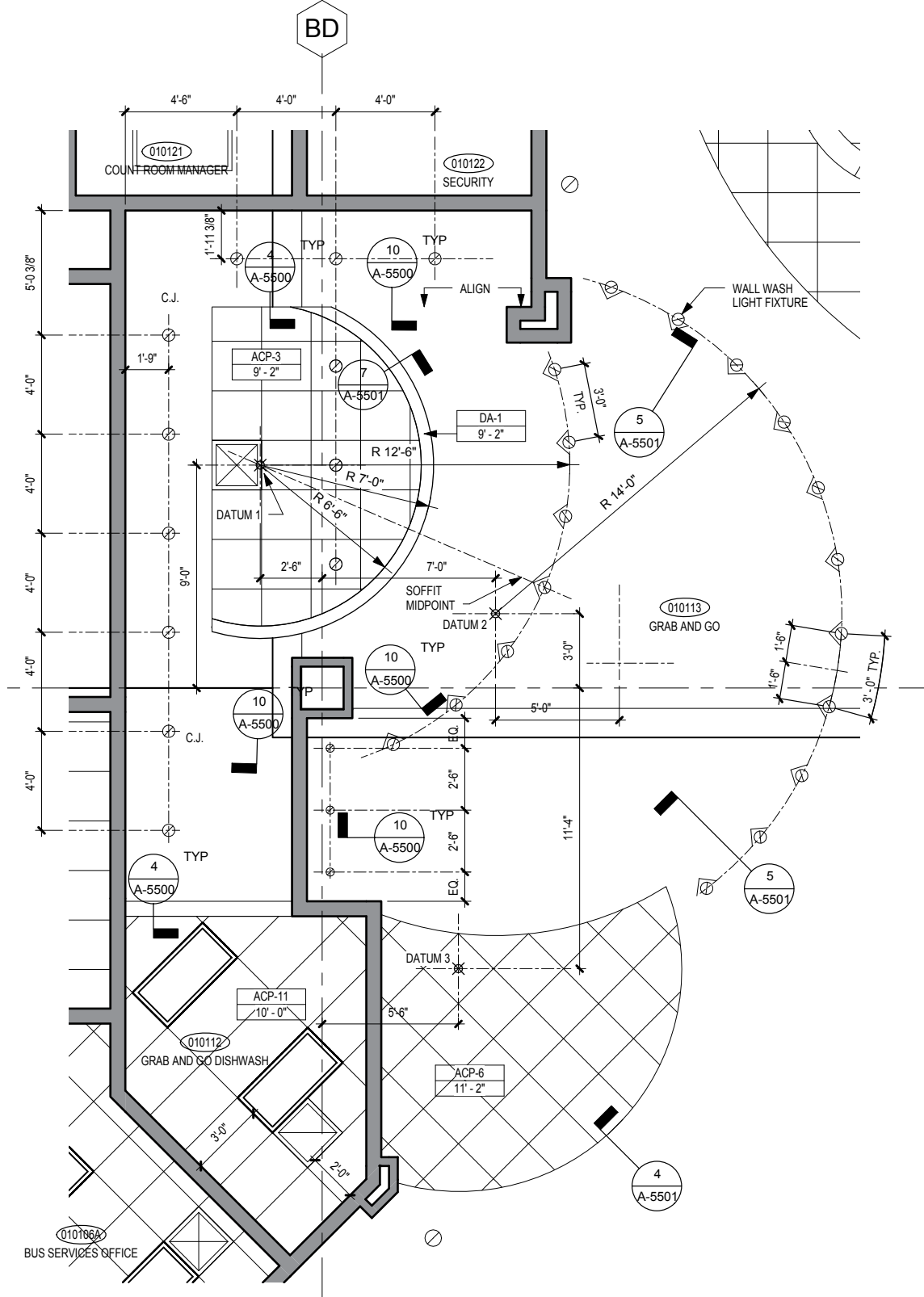
ADJACENT TO ENTRY IS LOW WALL WITH FULL LENGTH GLASS WINDOWS. WALL WILL HAVE STAINED WOOD CAP WITH STRIP ACCENT LIGHTING DOWN OVER FACE OF MOZ METAL AND WOOD BASE. WINDOW HAS PERIMETER PORTHOLE OF RECLAIMED STACKED WOOD PREFAB PANEL.  
<https://www.archsystems.com/WPP52002.aspx>

WALL FINISHES WILL BE VINYL WALLCOVERING AND PREFABRICATED WOOD MOSAIC PANELS. FLOOR FINISHES WILL BE PREMIUM WOOD GRAIN VINYL FLOORING.





**3 GRAB & GO ENLARGED FLOOR FINISH PLAN**  
 1/4" = 1'-0"



**2 GRAB & GO ENLARGED REFLECTED CEILING PLAN**  
 1/4" = 1'-0"



6 FOODCOURT VIEW 3  
1/32" = 1'-0"



4 FOODCOURT VIEW 2  
1/32" = 1'-0"



5 FOODCOURT VIEW 1  
3/84" = 1'-0"



3 FOODCOURT VIEW 4  
3/84" = 1'-0"



2 FOODCOURT VIEW 5  
3/84" = 1'-0"



1 FOODCOURT VIEW 6  
3/84" = 1'-0"



2 ITALIAN RESTAURANT VIEW 2  
NOT TO SCALE



1 ITALIAN RESTAURANT VIEW 1  
NOT TO SCALE



② ITALIAN RESTAURANT VIEW 4  
NOT TO SCALE



① ITALIAN RESTAURANT VIEW 3  
NOT TO SCALE

FLOOR FINISH TO BE  
PRIMARILY AXMINSTER CARPET  
36 COLOR BANK 40 OZ.  
CONTACT:  
PAUL BYRNE  
AT LASTER CARPETS  
848 880 9500  
917 228 6788

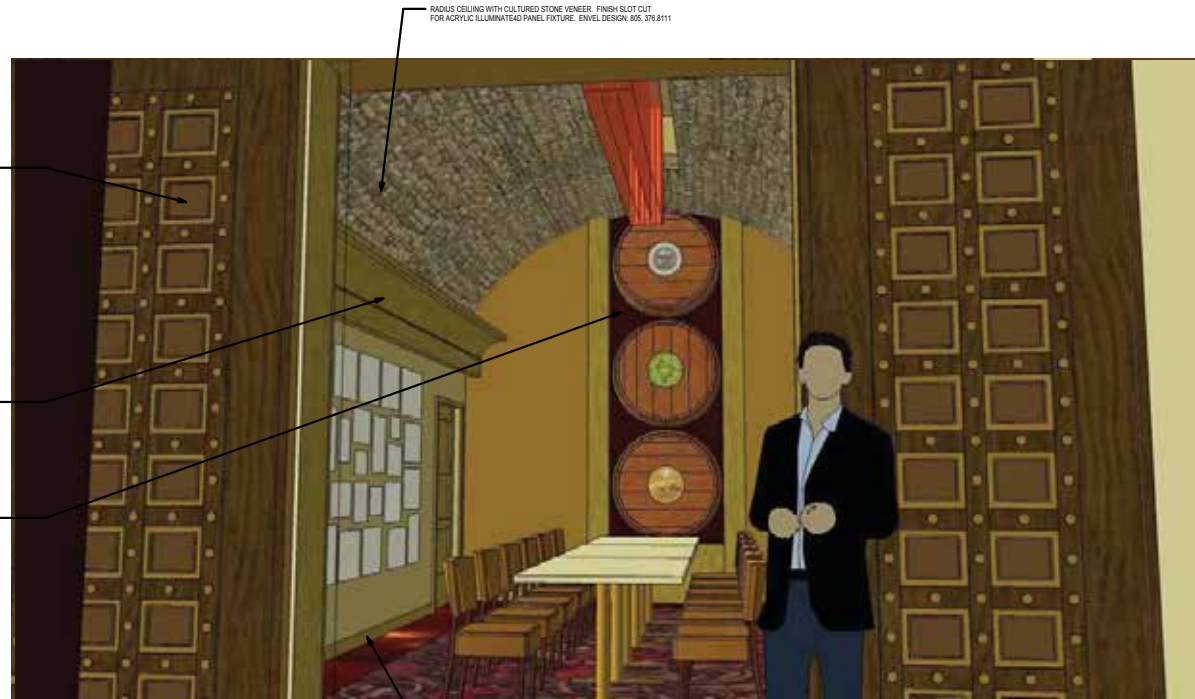


4 QUIET BAR FINISHES  
1/16" = 1'-0"

PRIVATE DINING ENTRY  
CUSTOM MILK T1 PANEL  
SOLID WOOD MILLWORK  
DOORS ON HORIZONTAL  
BARN DOOR SLIDING RAIL

LARGE STAINED SOLID  
WOODCROWN MOLDING  
LIGHT TROUGH

SALVAGED WINE BARRELS  
CUT OFF AND FIT INTO  
PERIMETER MILLWORK FRAME



RADIUS CEILING WITH CULTURED STONE VENEER. FINISH SLOT CUT  
FOR ACRYLIC ILLUMINATED PANEL FIXTURE. ENVEL DESIGN: 805.378.8111

VIC WALLS AND 4" STAINED  
SOLID WOOD BASE

2 PRIVATE DINING VIEW  
NOT TO SCALE



GYPSUM SOFFIT WITH REVEALS

3/4" SQUARE SHEET MOUNTED GLASS MOSAIC TILE GARDEN  
STATE TILE DUKE ATENZA. CONTACT: RON LUZ (203)-434-8547

BANQUETTE UPHOLSTERED SEAT

FLOOR IN LOUNGE TO BE 50% PORCELAIN TILE  
AND 50% AMMSTER CARPET

3 FINE DINING LOUNGE VIEW 2  
NOT TO SCALE



3/4" SQUARE SHEET MOUNTED GLASS MOSAIC TILE GARDEN  
STATE TILE DUKE ATENZA. CONTACT: RON LUZ (203)-434-8547

FEATURE WALL TO BE POLISHED PLASTER WITH STONE VENEER AT BASE. STAINED SOLID  
WOOD  
WOODWORK FRAMED OPENINGS OPENINGS TO BE COLOR ACRYLIC PANELS - INTERNALLY LIT.  
ENVEL DESIGN: 805.378.8111

CUSTOM CUT GLASS BEAD  
LIGHT FEATURE

ENVEL DICHROIC AND TEXTURED ACRYLIC  
PANELS ON STAND OFF HARDWARE  
SUPPORTED BY STRUCTURAL METAL  
FRAMING

STAINED WOOD LOW WALL

1 FINE DINING LOUNGE VIEW 1  
NOT TO SCALE

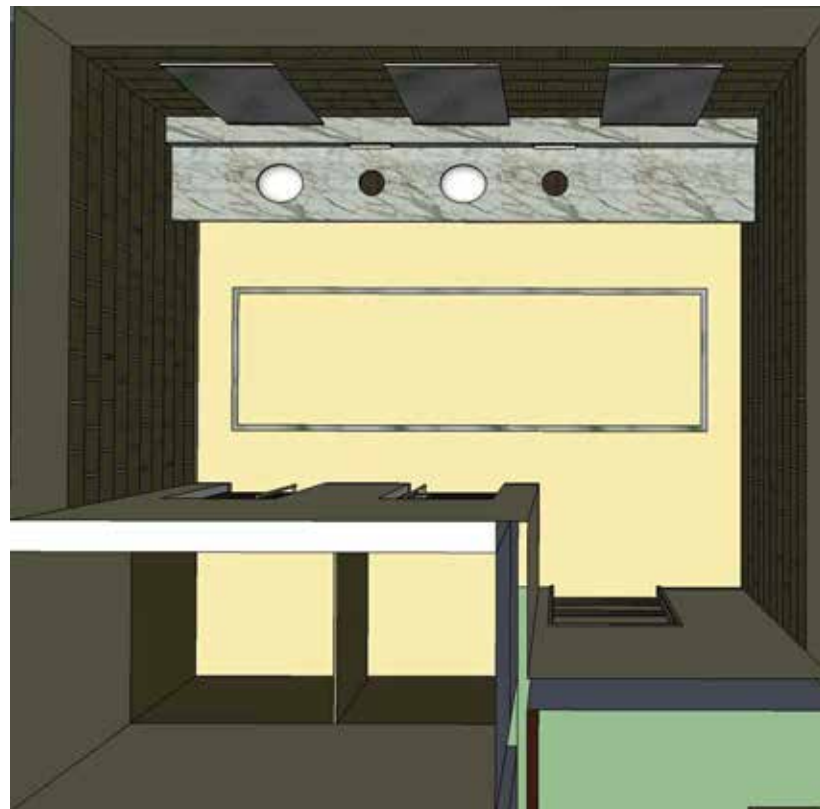




3 RESTAURANT TOILETS ELEVATION 1  
3/64" = 1'-0"



4 RESTAURANT TOILETS ELEVATION 2  
3/64" = 1'-0"



2 RESTAURANT TOILETS 3D PLAN  
3/64" = 1'-0"



1 RESTAURANT TOILETS LIGHT FIXTURE  
3/64" = 1'-0"

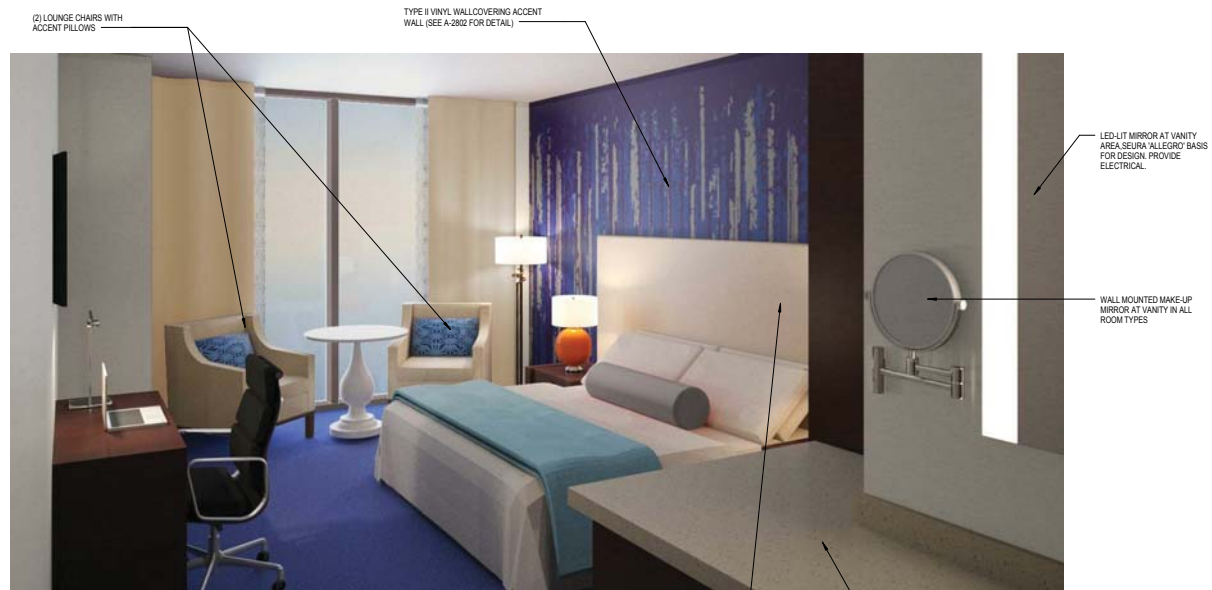
**NARRATIVE:**  
 1. WALL FINISH IS DAL TILE NATURAL HUES QH65 ESPRESSO 12x12" TILE STAGGERED BRICK JOINT WITH DAL TILE COLOR WAVE 2x12" CW65 WHIPPED CREAM ACCENT STRIP AS SHOWN IN IMAGE.  
 2. PORCELAIN TILE FLOOR AND BASE WITH 2" MOSAIC TILE ACCENT STRIP.  
 3. VANITY COUNTERTOP AND BACKSPLASH/SHELF IS TO BE CALCUTTA GOLD/WHITE VENEER GRANITE WITH WOOD GRAIN LAMINATE CABINETS.  
 4. UNDER MOUNT SINK, TOWEL DISPENSERS RECESSED IN BACKSPLASH/SHELF.  
 5. TOILET STALLS ARE CYPRESS BOARDING WITH WOOD GRAIN LAMINATE DOOR 12" ABOVE FLOOR. DOOR HAS VERTICAL DECORATIVE PULL ON OUTSIDE AND LATCH ON INSIDE. BROWN CORE PHENOLIC TOILET PARTITION BETWEEN TOILET AND URINALS.  
[http://www.algestone.com/charndlersinteriors/rome-89670-12-light-ramardo-charndler\\_11482512.html](http://www.algestone.com/charndlersinteriors/rome-89670-12-light-ramardo-charndler_11482512.html)



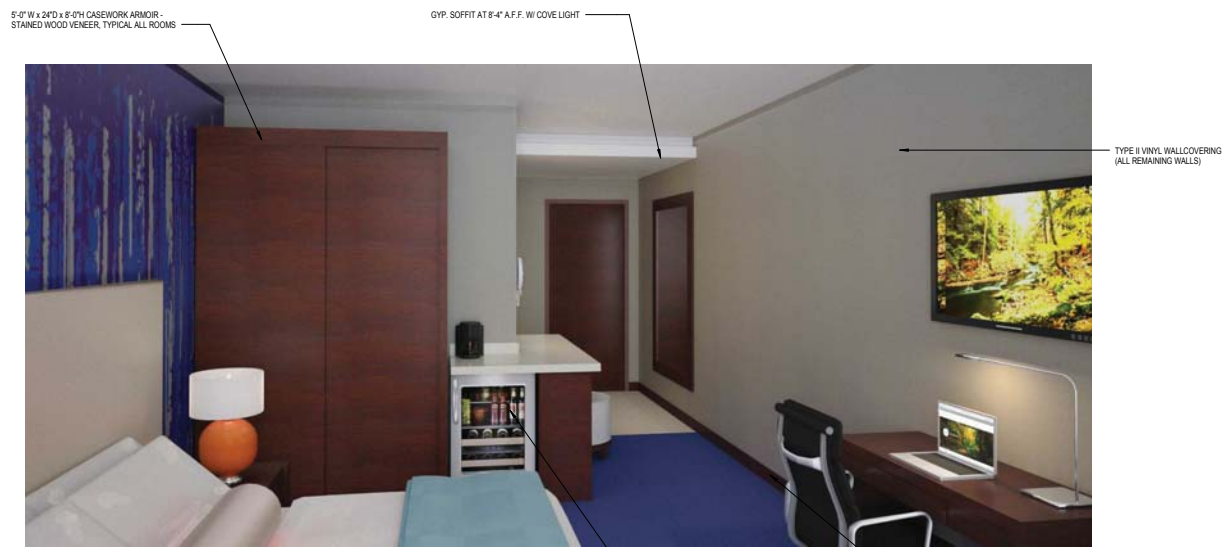
2 HOTEL ELEVATOR LOBBY PERSPECTIVE  
1/16" = 1'-0"



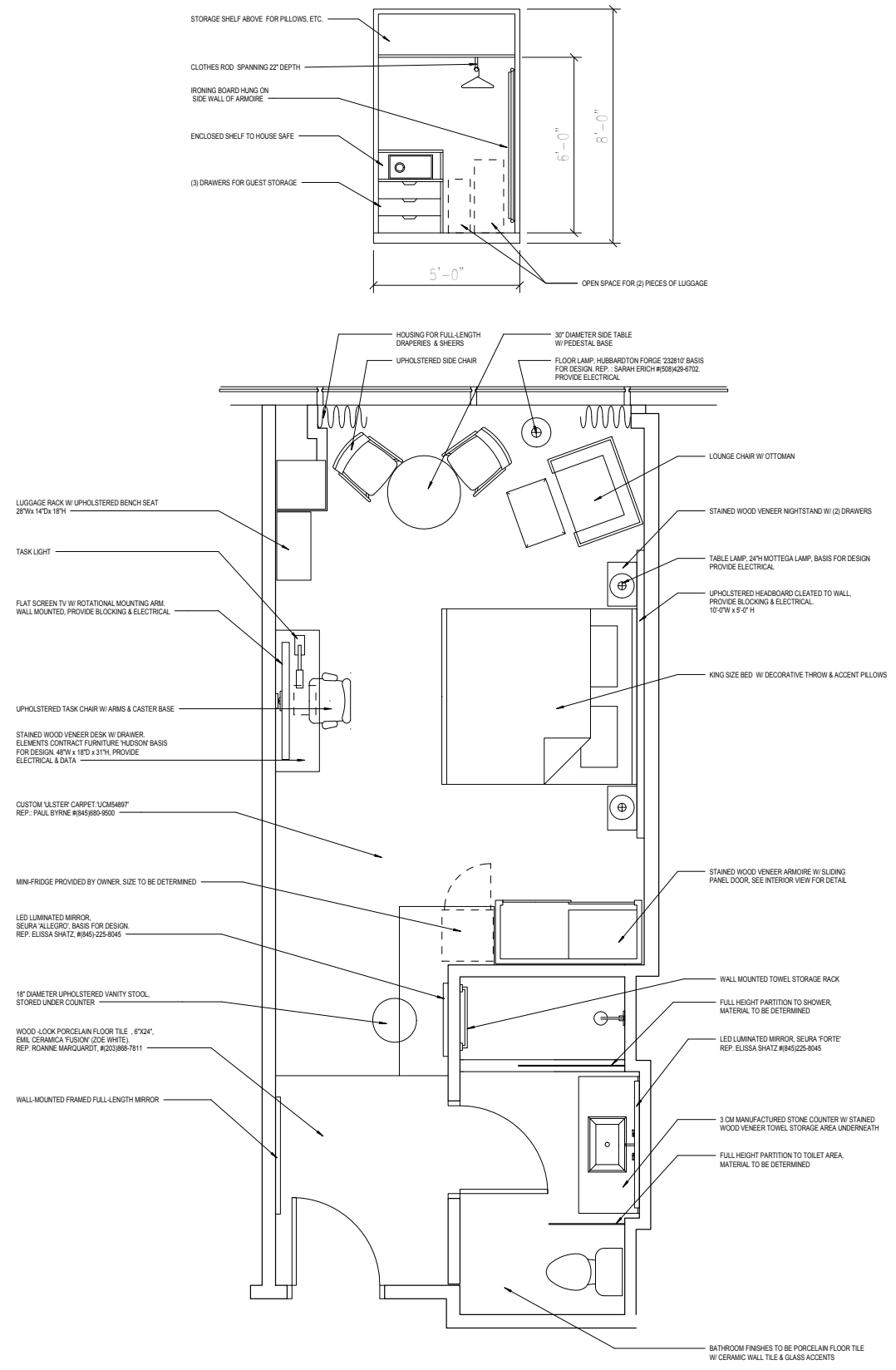
3 HOTEL ELEVATOR LOBBY PERSPECTIVE 2  
1/16" = 1'-0"



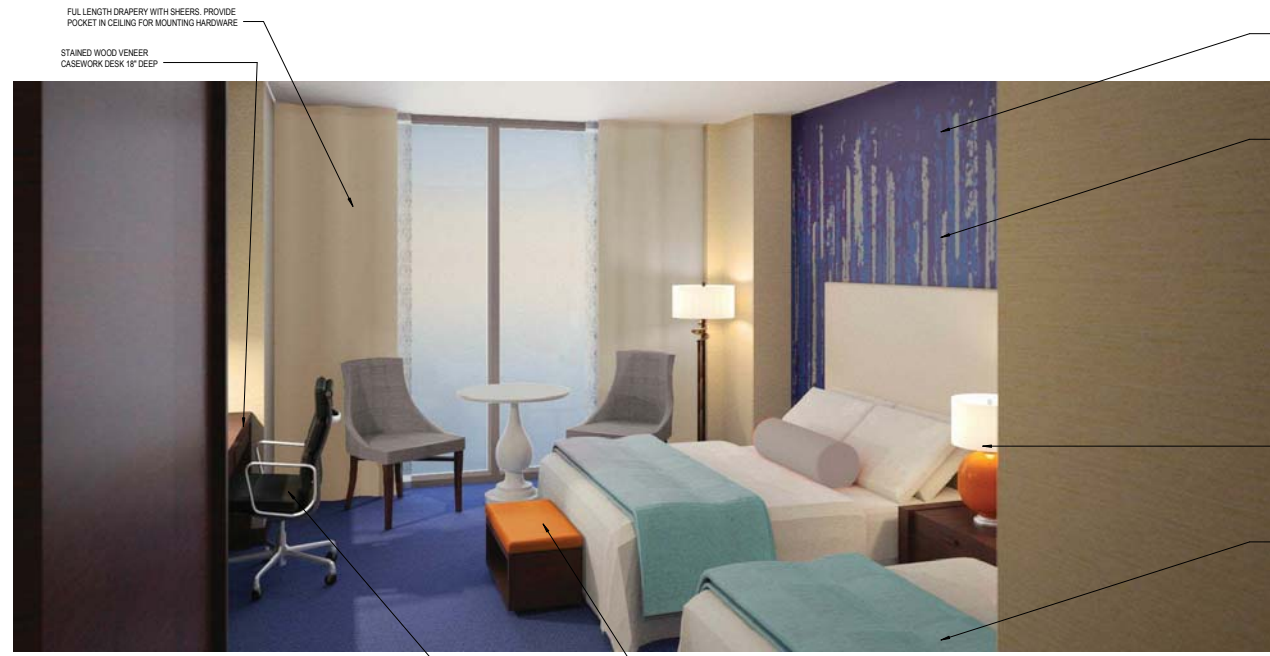
1 STANDARD HOTEL ROOM PERSPECTIVE 1  
3/32" = 1'-0"



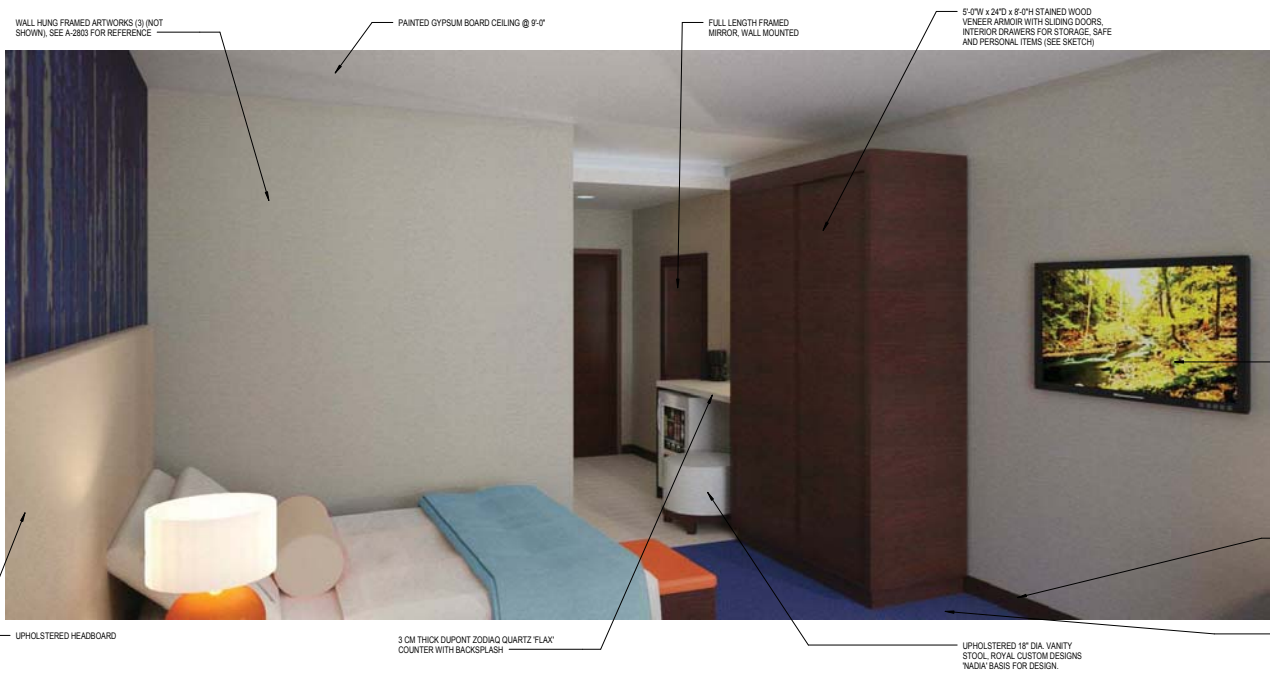
3 STANDARD HOTEL ROOM PERSPECTIVE 2  
3/32" = 1'-0"



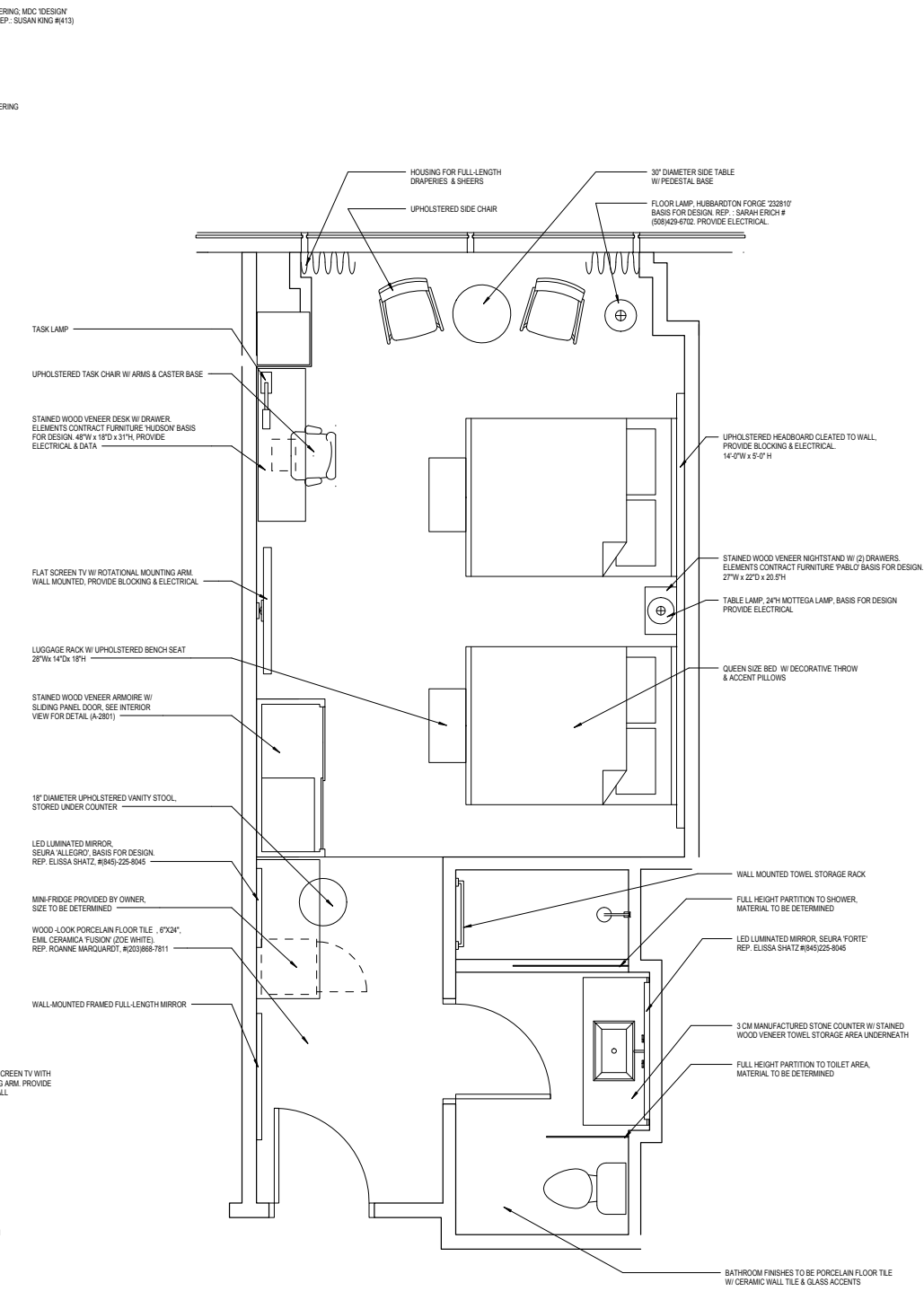
2 STANDARD HOTEL ROOM PLAN  
1/2" = 1'-0"



1 QUEEN DOUBLE PERSPECTIVE 1  
3/32" = 1'-0"



2 QUEEN DOUBLE PERSPECTIVE 2  
3/32" = 1'-0"



3 QUEEN DOUBLE PLAN  
1/2" = 1'-0"

FULL LENGTH DRAPERY WITH SHEERS. PROVIDE POCKET IN CEILING FOR MOUNTING HARDWARE



CUSTOM CARPET (AC123403)  
ULSTER REP. PAUL BYRNE #  
(845)885-4555

1 CORNER SUITE PERSPECTIVE 1

3/32" = 1'-0"

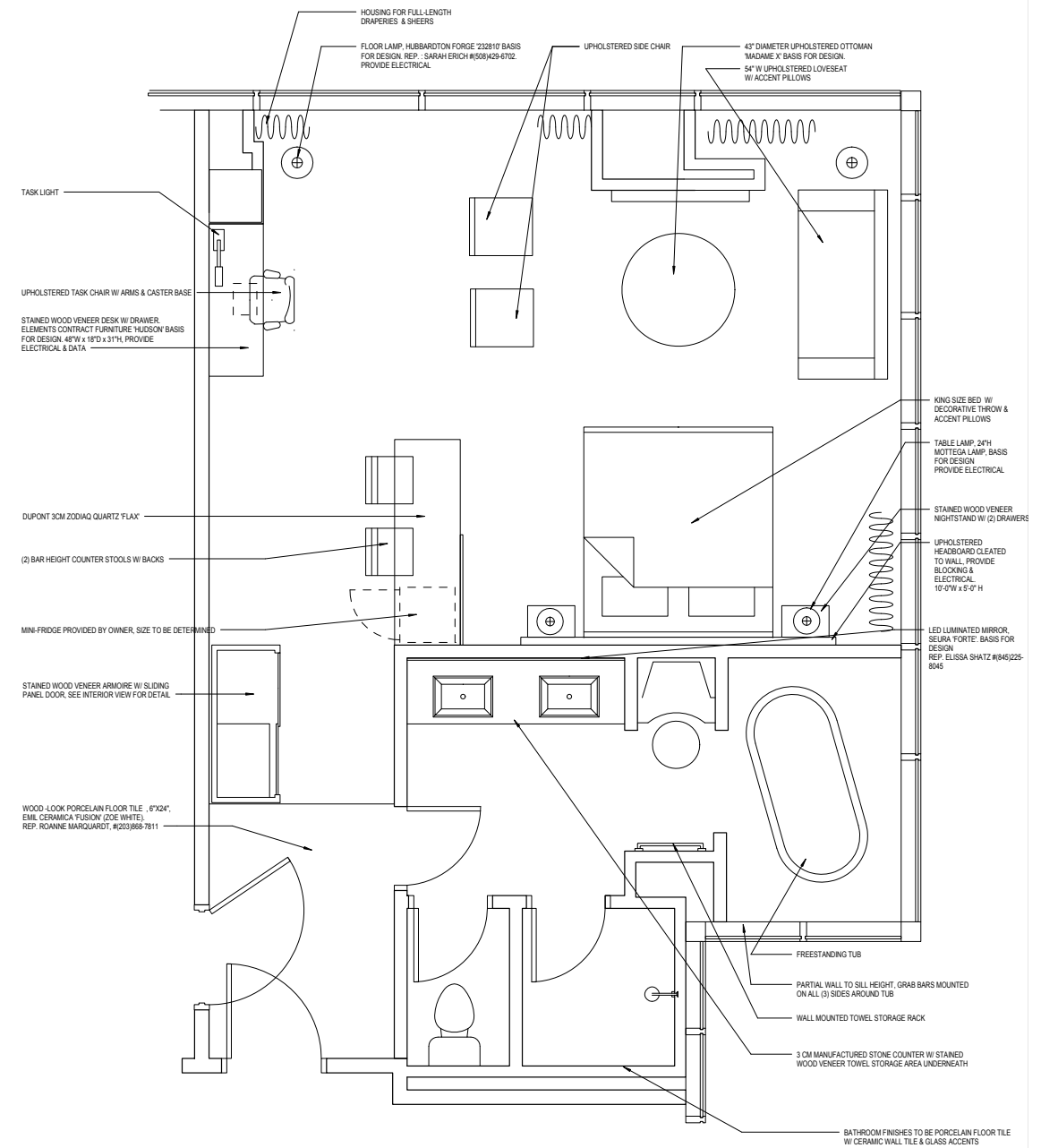
DECORATIVE SCREEN MATERIAL T.B.D. FRAMED ARTWORK (3)



BUILT-IN COUNTER WITH STAINED WOOD SIDE PANEL

2 CORNER SUITE PERSPECTIVE 2

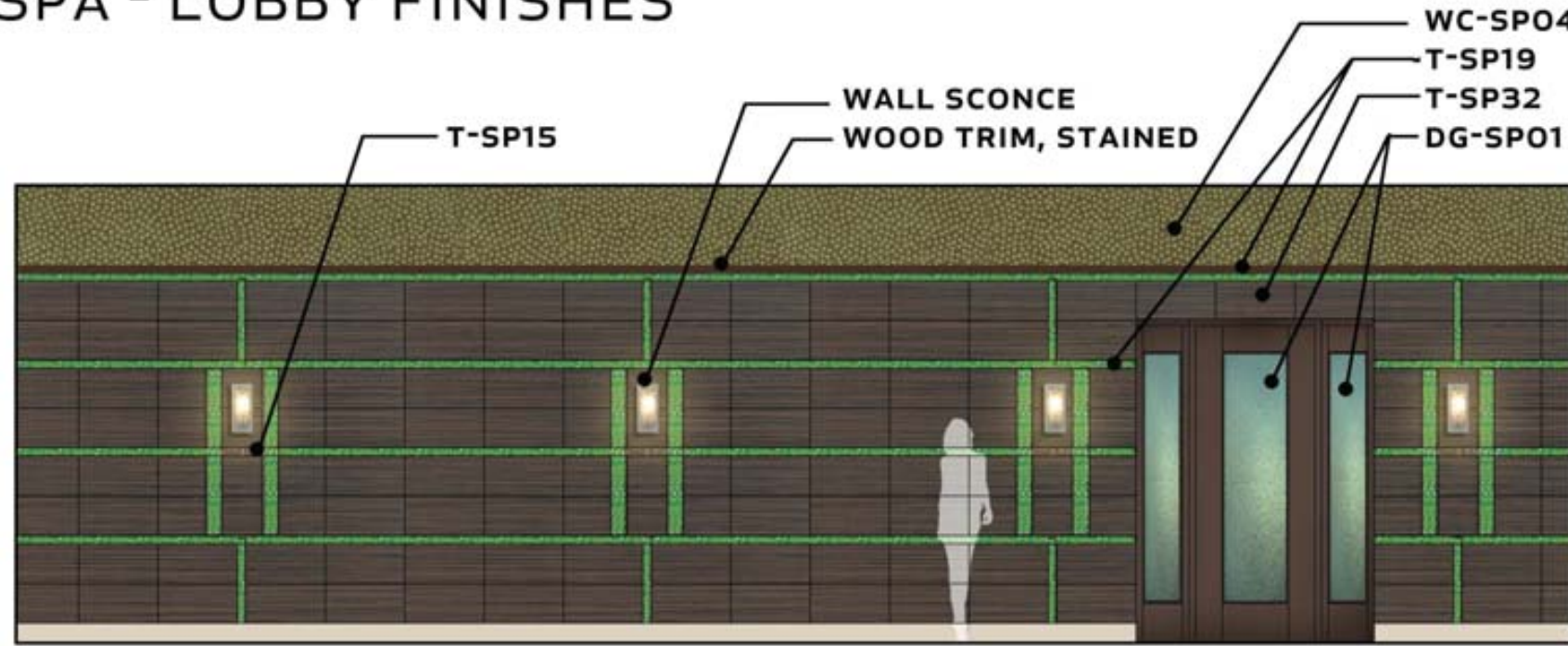
3/32" = 1'-0"



3 CORNER SUITE PLAN

1/2" = 1'-0"

# SPA - LOBBY FINISHES



ENTRY TO WOMEN'S LOCKER ROOM

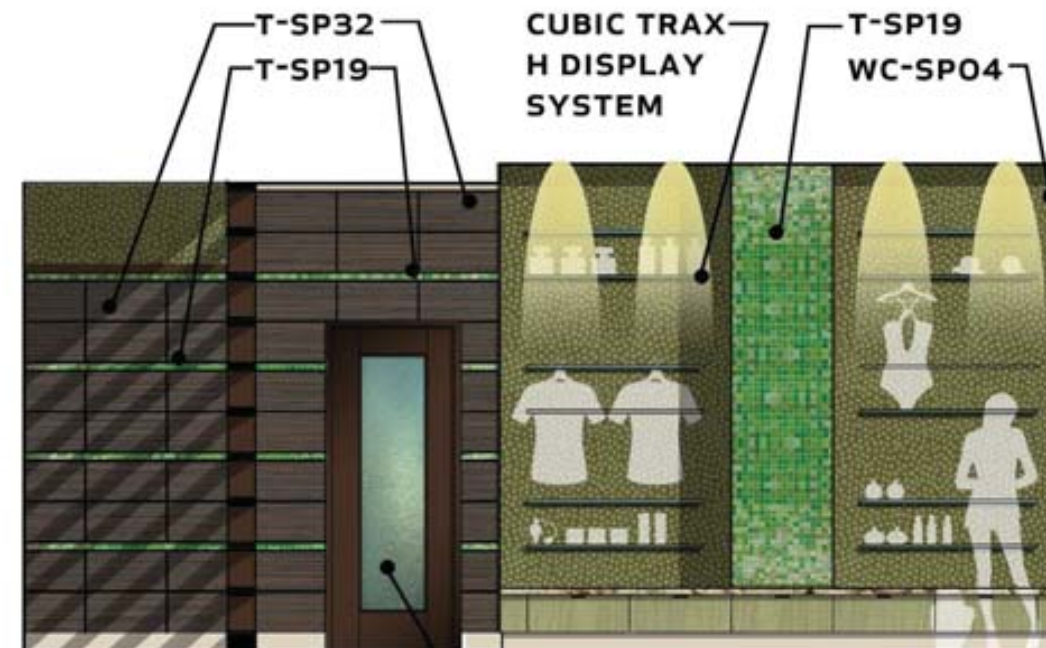


# SPA - LOBBY ELEVATIONS



ELEVATION 1 - SPA RECEPTION

DA-SP01 - INTERNALLY ILLUMINATED



ELEVATION 2 - SPA RETAIL

DG-SP01



"NEBULA" CHANDELIER

2X8 STAINED WOOD "SCREEN" WALL



ELEVATION 3 - SPA LOBBY, BACK "SCREEN" WALL



VIEW FROM CORRIDOR TOWARD ENTRY

# SPA - MEN'S & WOMEN'S LOUNGE FINISHES



©2012 JCJ Architecture, PC



# SPA - MEN'S & WOMEN'S LOCKER ROOM FINISHES



HOLLMAN WOOD LOCKERS



DIGI-LOCK



FAB-SP03



FAB-SP02

LOCKER ROOM BENCH



WC-08  
(WOMEN'S)

WC-SP09  
(MEN'S)



WET WALLS



DG-SP01



ST-SP01

T-SP04



T-SP05



PL-SP03

FLOORING:  
T-SP06



T-SP15  
(MEN'S STEAM)



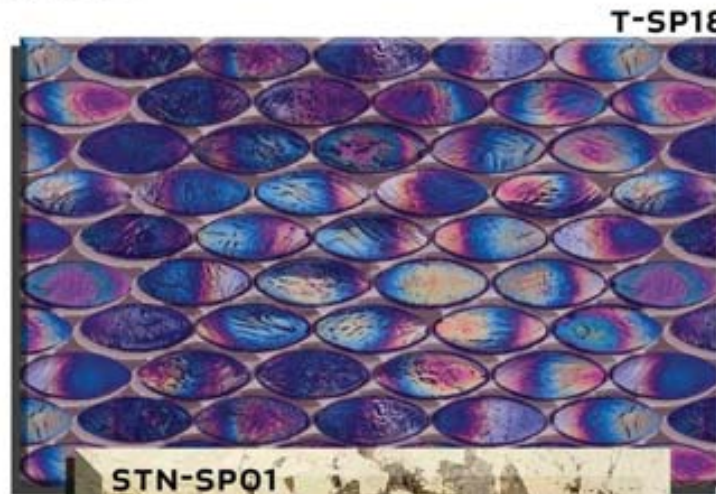
T-SP02

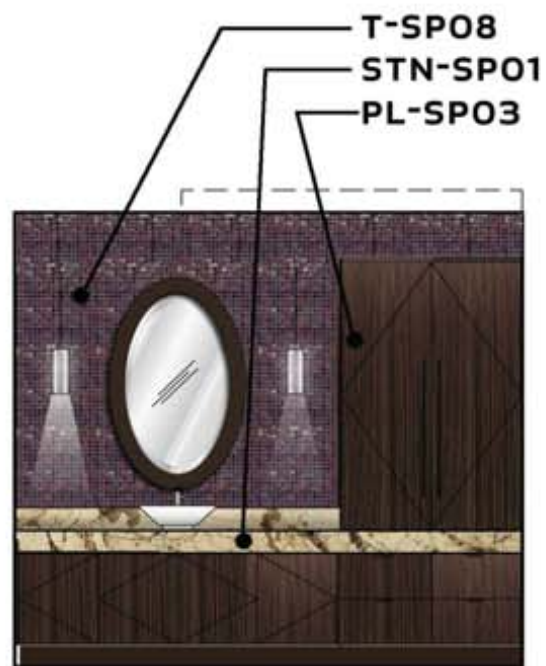


T-SP16  
(WOMEN'S STEAM)

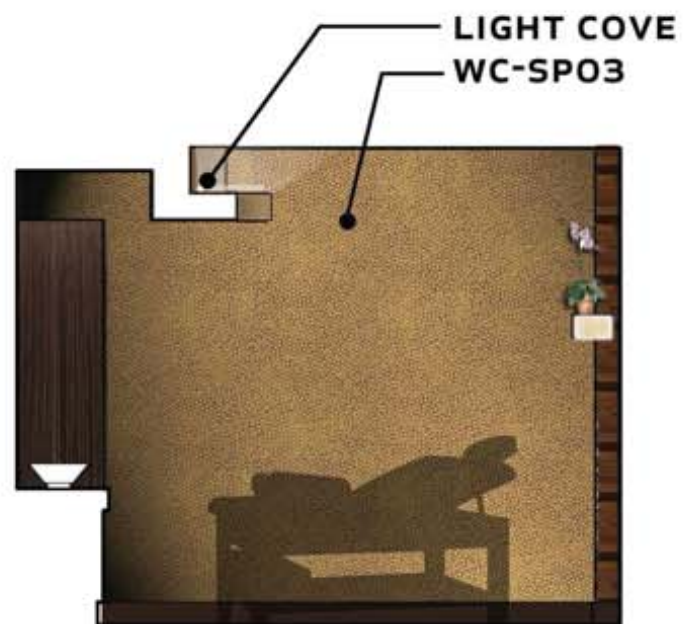
T-SP01

# SPA - TREATMENT ROOM FINISHES

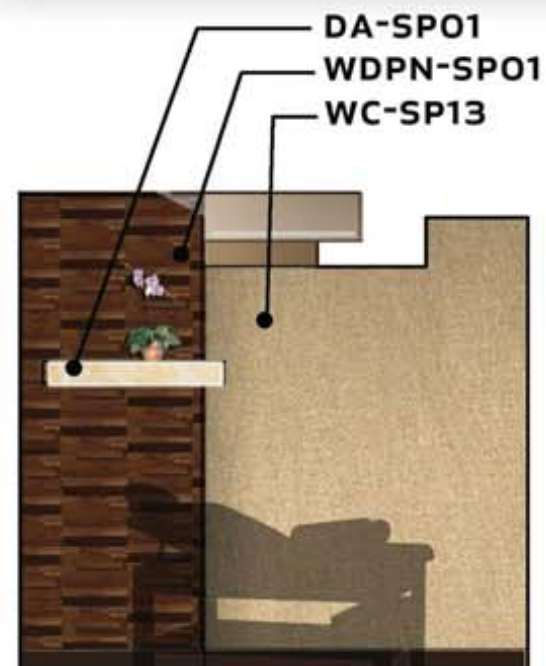




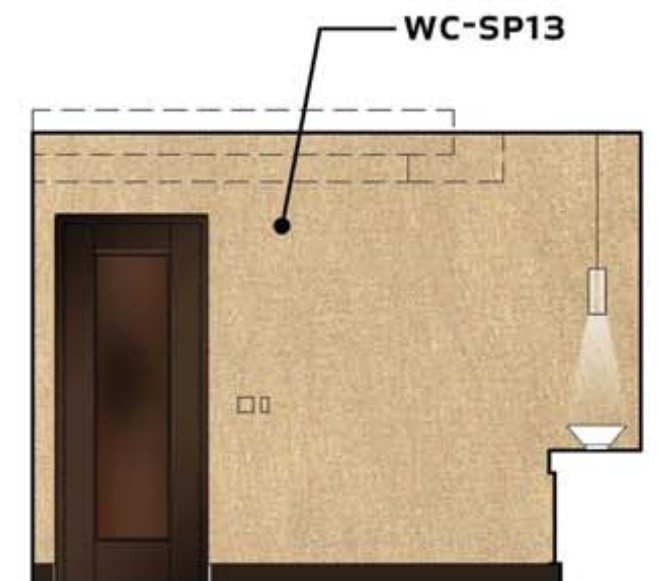
ELEVATION 1



ELEVATION 2



ELEVATION 3



ELEVATION 4