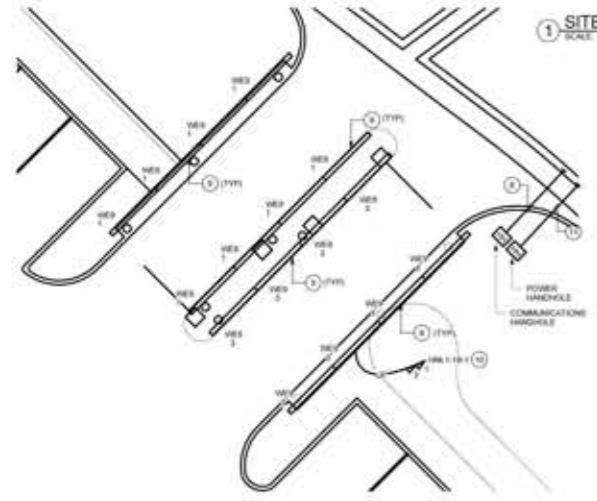


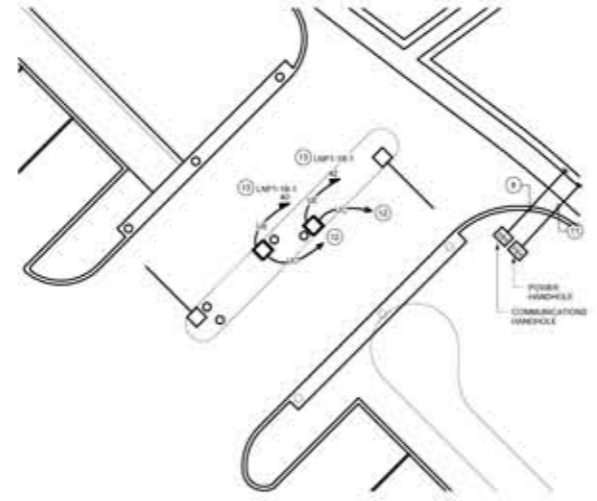
- GENERAL NOTES:**
- WHERE A SUBSTITUTION OF LIGHTING FIXTURE, POLE, ETC. ARE PROPOSED, CONTRACTOR SHALL SUBMIT A FULL RESPONSIBLE STUDY TO ARCHITECT FOR APPROVAL.
  - ALL CONDUITS FOR LIGHTING AND POWER SHALL BE ROUTED THROUGH-HANDHOLE FROM TO OUTSIDE THE BUILDING.
  - REFER TO CIVIL PLANS FOR LIGHTING POLE BASE DETAILS. CONCRETE BASES ARE PROVIDED UNDER SEPARATE CONTRACT. EC SHALL CONFIRM ALL REQUIRED SOFT FINISHES AND COMPLETE INSTALLATION OF CONCRETE, IRONING SYSTEMS AND GROUNDING.

- DRAWING NOTES:**
- ROUTE CIRCUITS THROUGH LIGHTING CONTRACTOR LOCATED ADJACENT TO PANEL AND TERMINATE IN DESIGNATED PANEL.
  - CONDUCTORS SHALL BE #10 AND BETWEEN AND GROUND IN 1" CONDUIT MINIMUM.
  - CONDUCTORS SHALL BE #10 AND WITH #10 AND GROUND IN 1" CONDUIT MINIMUM.
  - CONDUCTORS SHALL BE #10 AND WITH #10 AND GROUND IN 1" CONDUIT MINIMUM.
  - ADJUST FIXTURES TO ILLUMINATE ARCHITECTURAL FACADE ANGLED ROOF (TYPICAL ALL FIXTURES).
  - ROUTE POWER WIRING AND ADDITIONAL 1" CONDUIT FOR DIM CONTROL WIRING TO EACH FIXTURE ON CIRCUIT.
  - PROVIDE FOUR (4) ADDITIONAL 2" SQUARE CONDUITS WITH PULLSTRING FROM LIGHTING HANDHOLE TO NEAREST ELECTRICAL ROOM.
  - REFER TO DRAWING 0-008 FOR CONTINUATION OF CONDUITS FOR COMMUNICATIONS HANDHOLE SYSTEM. PROVIDE 2" CONDUITS FOR COMMUNICATIONS WIRING BETWEEN HANDHOLES.
  - PROVIDE STEEL FRAME ASSEMBLY FOR MOUNTING OF FIXTURES AT 4" ABOVE FINISHED GRADE. FIXTURE SHALL BE AT 45 DEGREE TO THE LINE FOR OPTIMAL LAMP LIGHTING DISTRIBUTION.
  - ROUTE CONDUITS THROUGH POWER HANDHOLE SYSTEM FOR FINAL CONNECTION TO PANEL (NOTED).
  - REFER TO DRAWING 0-007 FOR CONTINUATION OF CONDUITS FOR POWER HANDHOLE SYSTEM.
  - ROUTE 4 STRAND GULLY-BUSSE FIBER OPTIC CABLE. OUTSIDE PLANT THIS IS HANDHOLE FOR CONNECTION OF GULLY SYSTEM TO PROPERTY NETWORK. UTILIZE COMMUNICATIONS HANDHOLE SYSTEM FOR ROUTING TO PROPERTY AT ROOM.
  - CONDUCTORS FOR THIS CIRCUIT SHALL BE A MINIMUM OF #10 WITH #10 AND 1/2" LVL POWER HANDHOLE SYSTEM FOR ROUTING OF THESE CIRCUITS.
  - PROVIDE 2" CONDUITS FOR POWER WIRING BETWEEN HANDHOLES.

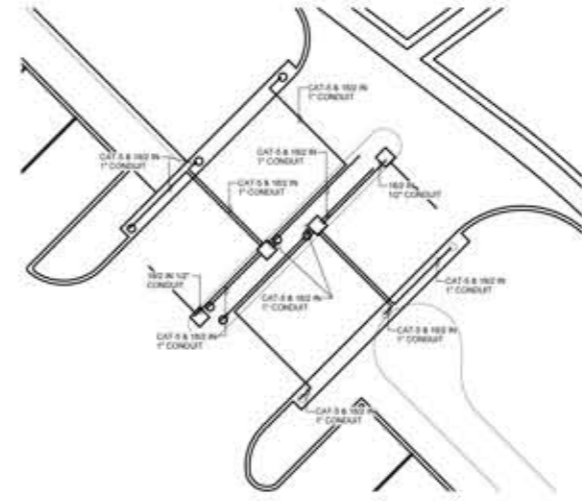
1 SITE PLAN - SOUTH - LIGHTING  
SCALE: 1/4" = 10'



4 VALET CAR SYSTEM - LIGHTING  
SCALE: 1/8" = 10'



3 VALET CAR SYSTEM - POWER & SYSTEMS  
SCALE: 1/8" = 10'

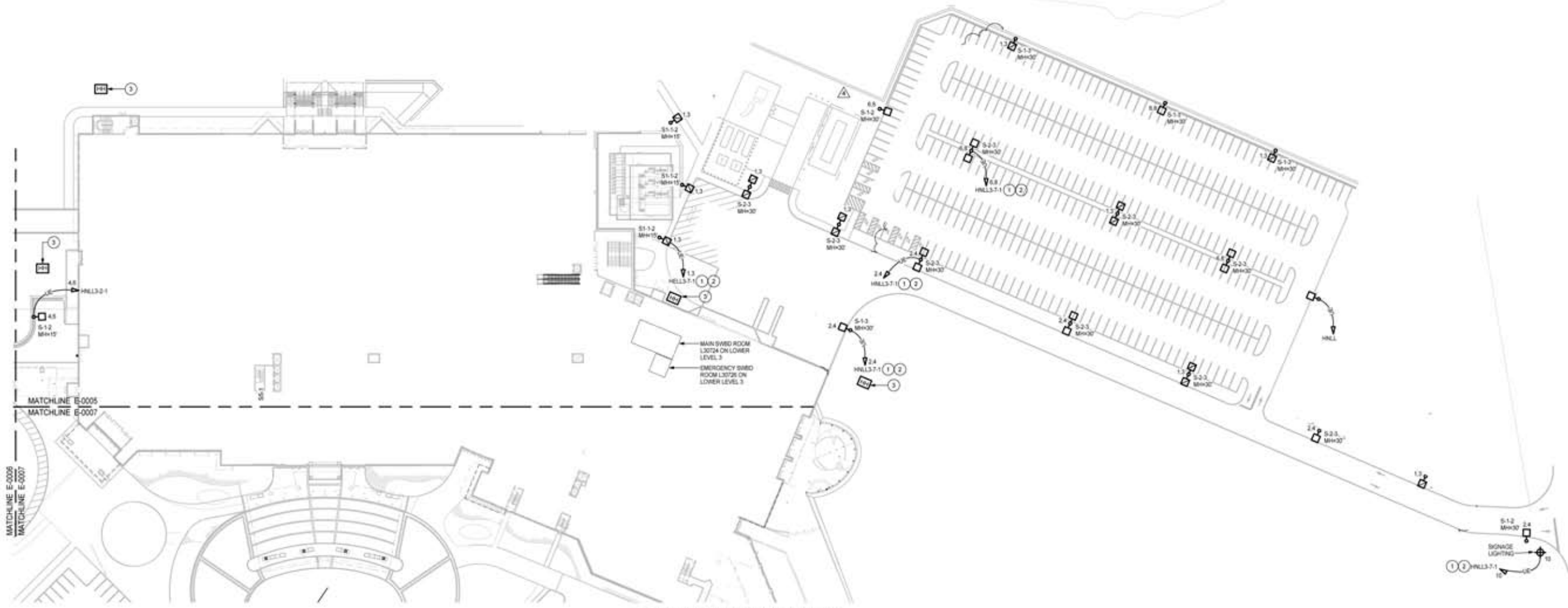


2 VALET CAR SYSTEM - POWER & SYSTEMS  
SCALE: 1/8" = 10'



SEE PAGE 1 FOR WORK IN THIS AREA

① **SITE PLAN - WEST - LIGHTING**  
SCALE: 1"=30'-0"



① SITE PLAN - NORTH - LIGHTING  
SCALE: 1" = 30'-0"