



EXHIBIT VIII.C.12. HOURS OF OPERATION

Submit as Exhibit VIII.C.12. a description of the Applicant's proposed hours of operation for the various components of the proposed Gaming Facility including the casino, restaurants, bars and other amenities.

Montreign Resort Casino

Montreign Resort Casino's various gaming, hotel, entertainment, restaurant and bar offerings present guests with an array of options year round. Generally, Montreign Resort Casino as a whole, including the casino and hotel, will be open 24 hours a day, 7 days a week, and 365 days a year. The casino floor beverage service will also operate 24 hours a day, 7 days a week, and 365 days a year, with all alcoholic beverages served in compliance with New York State liquor laws. The parking garage, valet and surface parking will also be available to Montreign guests 24 hours a day, 7 days a week, and 365 days a year. Further, the following amenities within Montreign will also be open 24 hours a day, 7 days a week, and 365 days a year:

- Me.Card Players' Club,
- Raine Casino Bar,
- The 24-Hour Diner, and
- The employee dining room ("EDR"), with food being served at all times in the EDR.

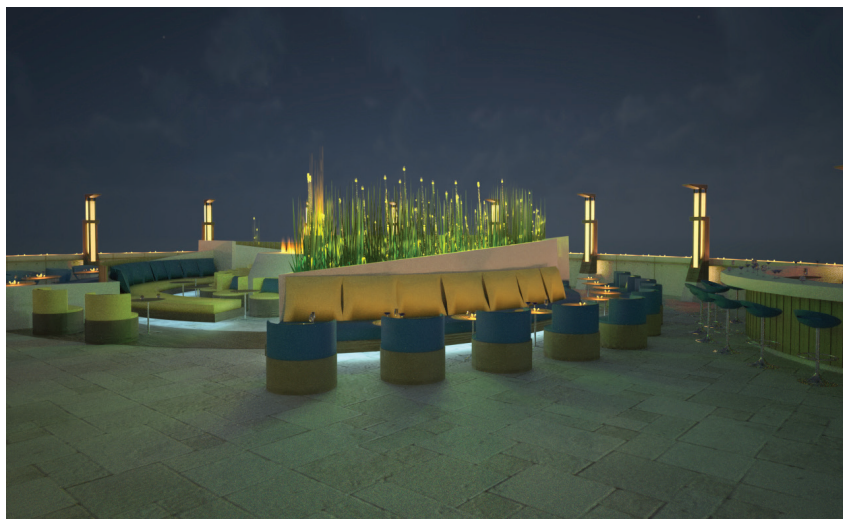


While some Montreign restaurants, bars and lounges are open 24 hours a day or until early morning hours, all alcoholic beverages at Montreign will be served in compliance with New York State liquor laws.

The V.I.Me. Players' Lounge will be open Friday through Sunday from 4 PM until midnight, as well as some holidays and on other occasions as business needs require.

The Alchemy Sports and Entertainment Bar restaurant will be open 7 days a week, and 365 days a year. This outlet will operate, and food will be served, from 11 AM until 2 AM weekdays and from 11 AM until 4 AM on the weekends.

Bistecca Italian Steakhouse will be open 7 days a week but may be closed for some holidays. Bistecca Italian Steakhouse will operate from 4 PM until 10 PM on weekdays and 4 PM until 11 PM on the weekends. The Bistecca Italian Steakhouse's bar will be open 7 days a week but may be closed for some holidays. The bar will operate from 4 PM until midnight weekdays and Sunday, and 4 PM until 1 AM on Friday and Saturday, and will serve a bar menu from 9 PM to closing on those days.



Firefly Restaurant and Bar at the outdoor patio will be open seasonally based on weather and may be rented for private parties. Normal hours of operation will be seasonally on weekends from 5 PM until 2 AM, and food will be served during those hours.

M Food Court will be open 11 AM until 2 AM, 7 days a week, and 365 days a year. G2G Grab-N-Go will be open from 6 AM until 10 PM on weekdays and from 6 AM until 2 AM on the weekends.

Montreign guests will also have plenty of time to enjoy the relaxing and tranquil environments offered by Montreign's pool, spa and salon. The Montreign hotel pool, which is available to hotel and spa guests, will be open from 6 AM until 8 PM, 7 days a week and 365 days a year. Montreign's spa and salon will be open from 10 AM to 6 PM, with the spa operating from Tuesday through Sunday, and the salon operating from Tuesday through Saturday. The hotel fitness center will be open from 6 AM until 8 PM, 7 days a week and 365 days a year.

The M Centre event space and meeting rooms will be utilized for private events and concerts and will be available for reservations 365 days a year. M Centre and meeting rooms will be made available for business, social, fraternal, civic, special events, sporting events and entertainment.

Entertainment Village, Indoor Waterpark Lodge and Monster Golf Course

The Entertainment Village's various restaurant, retail and entertainment offerings, as more fully described in Exhibit VIII.C.10.a., will be permitted to stay open 365 days per year, but some venues may be closed for major holidays, or operate with hours adjusted for tenant's commercial needs. The specific operating hours for the Entertainment Village's various restaurant, retail and entertainment offerings have not been set at this time as they will largely be dependent on tenant requirements. It is presumed that retail tenants will be open from 10 AM or 11 AM until 6 PM, that restaurant tenants will be open from 11 AM until 9 PM, and that bars and nightclubs will be open from 5 PM until midnight. Hours will be adjusted for weekends, seasonality and holidays as agreed upon by the tenants and the manager.



The Indoor Waterpark Lodge will be open and offer all services 365 days per year. With some seasonal adjustment, the indoor waterpark will be open from 9 AM to 10 PM daily. Based on seasonal conditions, the outdoor amenities will generally be open from 10 AM to 7 PM daily. Some twilight or night-time activities may also be offered on certain occasions.

The Monster Golf Course will be opened seasonally, and will be in operation during daylight hours. The Clubhouse will offer evening dining, and occasional function entertainment, all year long.