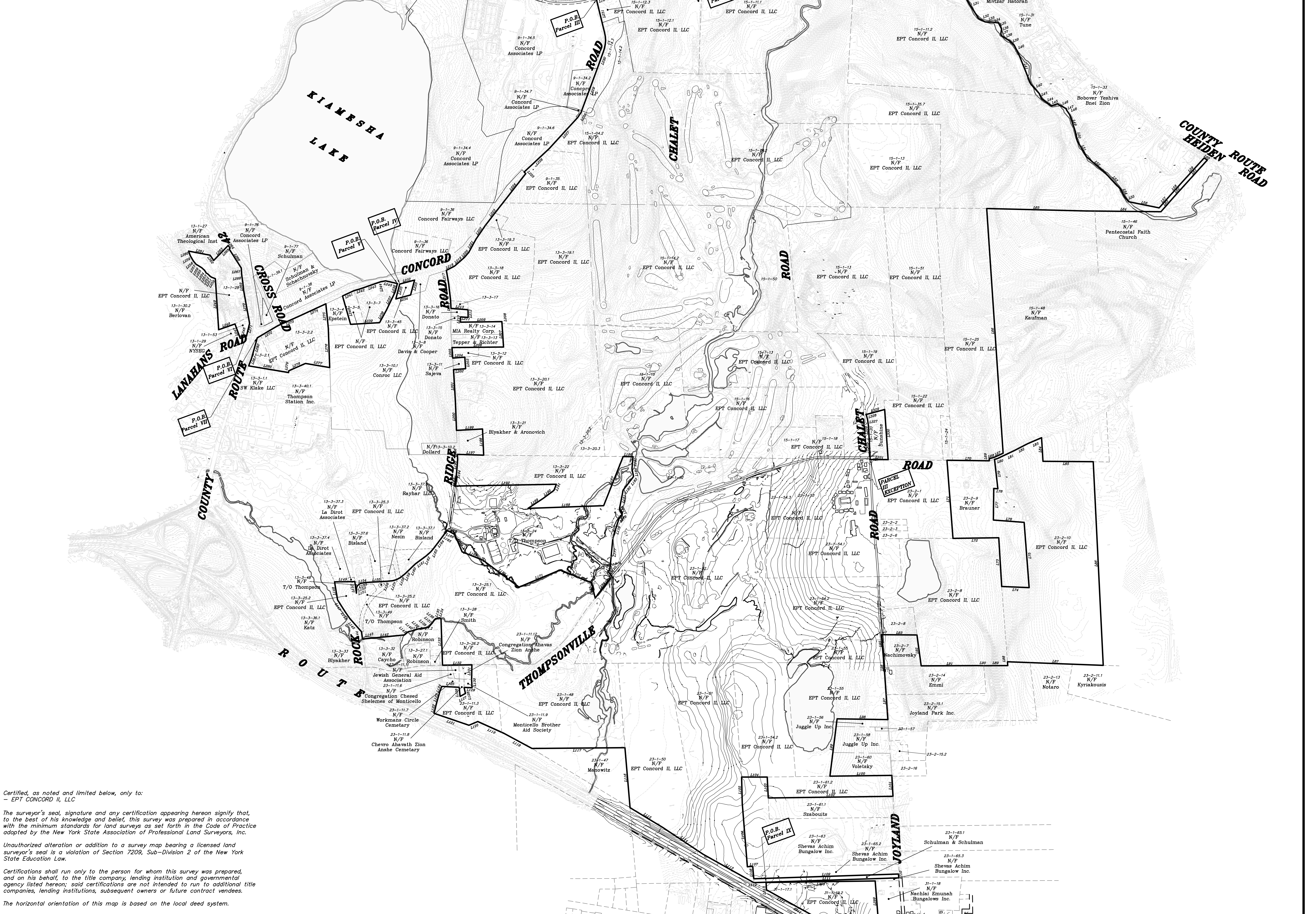
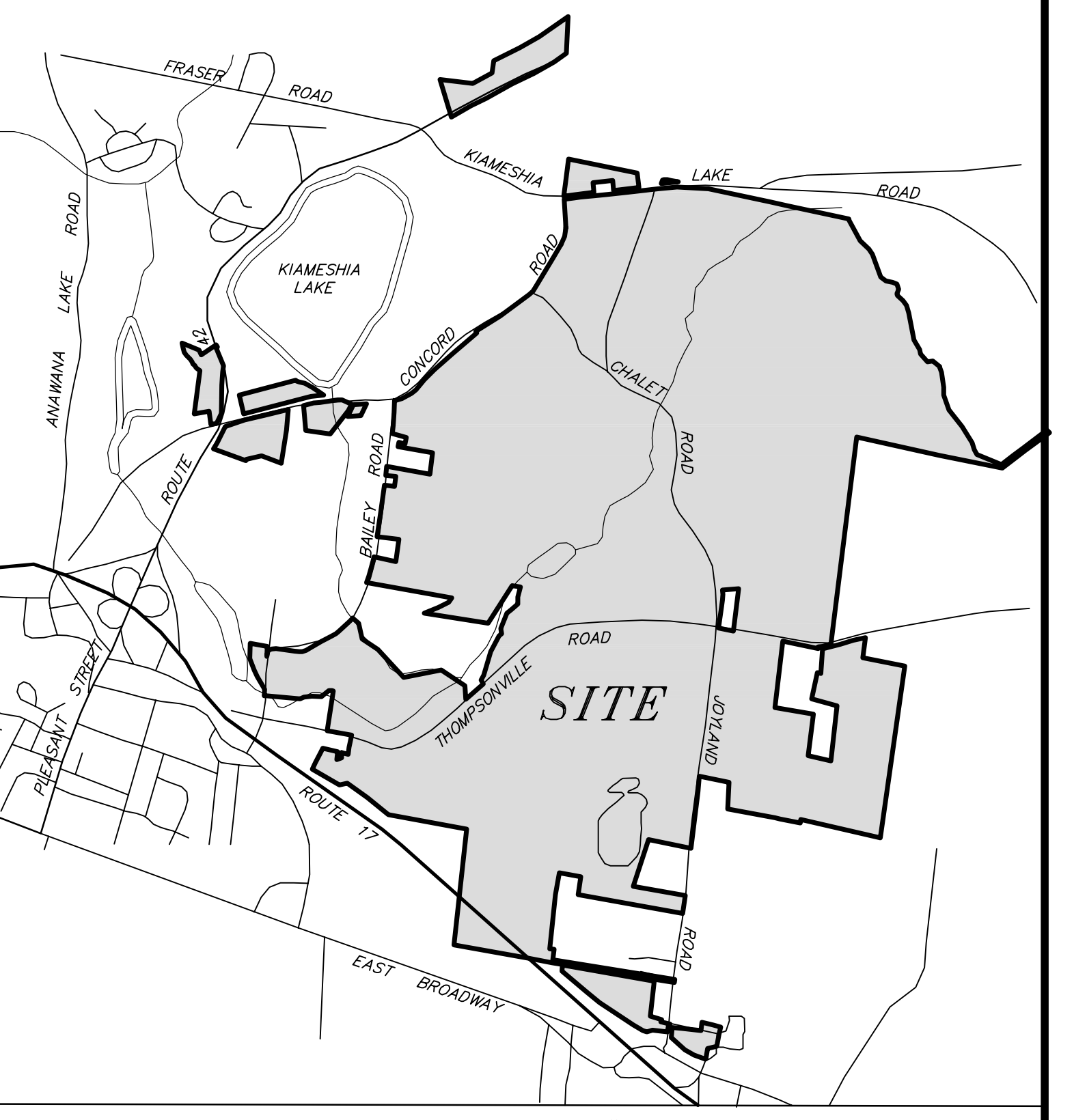


LINE	BEARING	LENGTH
L1	S17°20'00"W	1074.74
L2	S89°58'00"W	214.00
L3	N89°58'00"W	386.00
L4	S89°58'00"W	150.00
L5	N89°45'00"W	200.00
L6	N89°45'00"W	215.00
L7	S89°58'00"W	386.00
L8	N89°45'00"W	200.00
L9	N89°45'00"W	215.00
L10	N89°45'00"W	200.00
L11	S89°58'00"W	386.00
L12	N89°45'00"W	200.00
L13	S89°58'00"W	386.00
L14	S89°58'00"W	386.00
L15	S89°58'00"W	386.00
L16	S89°58'00"W	386.00
L17	S89°58'00"W	386.00
L18	S89°58'00"W	386.00
L19	S89°58'00"W	386.00
L20	S89°58'00"W	386.00
L21	S89°58'00"W	386.00
L22	S89°58'00"W	386.00
L23	S89°58'00"W	386.00
L24	S89°58'00"W	386.00
L25	S89°58'00"W	386.00
L26	S89°58'00"W	386.00
L27	S89°58'00"W	386.00
L28	S89°58'00"W	386.00
L29	S89°58'00"W	386.00
L30	S89°58'00"W	386.00
L31	S89°58'00"W	386.00
L32	S89°58'00"W	386.00
L33	S89°58'00"W	386.00
L34	S89°58'00"W	386.00
L35	S89°58'00"W	386.00
L36	S89°58'00"W	386.00
L37	S89°58'00"W	386.00
L38	S89°58'00"W	386.00
L39	S89°58'00"W	386.00
L40	S89°58'00"W	386.00
L41	S89°58'00"W	386.00
L42	S89°58'00"W	386.00
L43	S89°58'00"W	386.00
L44	S89°58'00"W	386.00
L45	S89°58'00"W	386.00
L46	S89°58'00"W	386.00
L47	S89°58'00"W	386.00
L48	S89°58'00"W	386.00
L49	S89°58'00"W	386.00
L50	S89°58'00"W	386.00

LINE	BEARING	LENGTH
L51	S89°58'00"W	386.00
L52	S89°58'00"W	386.00
L53	S89°58'00"W	386.00
L54	S89°58'00"W	386.00
L55	S89°58'00"W	386.00
L56	S89°58'00"W	386.00
L57	S89°58'00"W	386.00
L58	S89°58'00"W	386.00
L59	S89°58'00"W	386.00
L60	S89°58'00"W	386.00
L61	S89°58'00"W	386.00
L62	S89°58'00"W	386.00
L63	S89°58'00"W	386.00
L64	S89°58'00"W	386.00
L65	S89°58'00"W	386.00
L66	S89°58'00"W	386.00
L67	S89°58'00"W	386.00
L68	S89°58'00"W	386.00
L69	S89°58'00"W	386.00
L70	S89°58'00"W	386.00
L71	S89°58'00"W	386.00
L72	S89°58'00"W	386.00
L73	S89°58'00"W	386.00
L74	S89°58'00"W	386.00
L75	S89°58'00"W	386.00
L76	S89°58'00"W	386.00
L77	S89°58'00"W	386.00
L78	S89°58'00"W	386.00
L79	S89°58'00"W	386.00
L80	S89°58'00"W	386.00
L81	S89°58'00"W	386.00
L82	S89°58'00"W	386.00
L83	S89°58'00"W	386.00
L84	S89°58'00"W	386.00
L85	S89°58'00"W	386.00
L86	S89°58'00"W	386.00
L87	S89°58'00"W	386.00
L88	S89°58'00"W	386.00
L89	S89°58'00"W	386.00
L90	S89°58'00"W	386.00
L91	S89°58'00"W	386.00
L92	S89°58'00"W	386.00
L93	S89°58'00"W	386.00
L94	S89°58'00"W	386.00
L95	S89°58'00"W	386.00
L96	S89°58'00"W	386.00
L97	S89°58'00"W	386.00
L98	S89°58'00"W	386.00
L99	S89°58'00"W	386.00
L100	S89°58'00"W	386.00

LINE	BEARING	LENGTH
L101	S89°58'00"W	386.00
L102	S89°58'00"W	386.00
L103	S89°58'00"W	386.00
L104	S89°58'00"W	386.00
L105	S89°58'00"W	386.00
L106	S89°58'00"W	386.00
L107	S89°58'00"W	386.00
L108	S89°58'00"W	386.00
L109	S89°58'00"W	386.00
L110	S89°58'00"W	386.00
L111	S89°58'00"W	386.00
L112	S89°58'00"W	386.00
L113	S89°58'00"W	386.00
L114	S89°58'00"W	386.00
L115	S89°58'00"W	386.00
L116	S89°58'00"W	386.00
L117	S89°58'00"W	386.00
L118	S89°58'00"W	386.00
L119	S89°58'00"W	386.00
L120	S89°58'00"W	386.00
L121	S89°58'00"W	386.00
L122	S89°58'00"W	386.00
L123	S89°58'00"W	386.00
L124	S89°58'00"W	386.00
L125	S89°58'00"W	386.00
L126	S89°58'00"W	386.00
L127	S89°58'00"W	386.00
L128	S89°58'00"W	386.00
L129	S89°58'00"W	386.00
L130	S89°58'00"W	386.00
L131	S89°58'00"W	386.00
L132	S89°58'00"W	386.00
L133	S89°58'00"W	386.00
L134	S89°58'00"W	386.00
L135	S89°58'00"W	386.00
L136	S89°58'00"W	386.00
L137	S89°58'00"W	386.00
L138	S89°58'00"W	386.00
L139	S89°58'00"W	386.00
L140	S89°58'00"W	386.00
L141	S89°58'00"W	386.00
L142	S89°58'00"W	386.00
L143	S89°58'00"W	386.00
L144	S89°58'00"W	386.00
L145	S89°58'00"W	386.00
L146	S89°58'00"W	386.00
L147	S89°58'00"W	386.00
L148	S89°58'00"W	386.00
L149	S89°58'00"W	386.00
L150	S89°58'00"W	386.00

LINE	BEARING	LENGTH
L151	S89°58'00"W	386.00
L152	S89°58'00"W	386.00
L153	S89°58'00"W	386.00
L154	S89°58'00"W	386.00
L155	S89°58'00"W	386.00
L156	S89°58'00"W	386.00
L157	S89°58'00"W	386.00
L158	S89°58'00"W	386.00
L159	S89°58'00"W	386.00
L160	S89°58'00"W	386.00
L161	S89°58'00"W	386.00
L162	S89°58'00"W	386.00
L163	S89°58'00"W	386.00
L164	S89°58'00"W	386.00
L165	S89°58'00"W	386.00
L166	S89°58'00"W	386.00
L167	S89°58'00"W	386.00
L168	S89°58'00"W	386.00
L169	S89°58'00"W	386.00
L170	S89°58'00"W	386.00
L171	S89°58'00"W	386.00
L172	S89°58'00"W	386.00
L173	S89°58'00"W	386.00
L174	S89°58'00"W	386.00
L175	S89°58'00"W	386.00
L176	S89°58'00"W	386.00
L177	S89°58'00"W	386.00
L178	S89°58'00"W	386.00
L179	S89°58'00"W	386.00
L180	S89°58'00"W	386.00
L181	S89°58'00"W	386.00
L182	S89°58'00"W	386.00
L183	S89°58'00"W	386.00
L184	S89°58'00"W	386.00
L185	S89°58'00"W	386.00
L186	S89°58'00"W	386.00
L187	S89°58'00"W	386.00
L188	S89°58'00"W	386.00
L189	S89°58'00"W	386.00
L190	S89°58'00"W	386.00
L191	S89°58'00"W	386.00
L192	S89°58'00"W	386.00
L193	S89°58'00"W	386.00
L194	S89°58'00"W	386.00
L195	S89°58'00"W	386.00
L196	S89°58'00"W	386.00
L197	S89°58'00"W	386.00
L198	S89°58'00"W	386.00
L199	S89°58'00"W	386.00
L200	S89°58'00"W	386.00



Certified, as noted and limited below, only to: **EPT CONCORD II, LLC**

The surveyor's seal, signature and any certification appearing hereon signify that, to the best of his knowledge and belief, this survey was prepared in accordance with the minimum standards for land surveys as set forth in the Code of Practice adopted by the New York State Association of Professional Land Surveyors, Inc.

Unauthorized alteration or addition to a survey map bearing a licensed land surveyor's seal is a violation of Section 7209, Sub-Division 2 of the New York State Education Law.

Certifications shall run only to the person for whom this survey was prepared, and on his behalf, to the title company, lending institution and governmental agency listed hereon; said certifications are not intended to run to additional title companies, lending institutions, subsequent owners or future contract vendees.

The horizontal orientation of this map is based on the local deed system.

Contours and elevations shown hereon in the foreground were interpolated photogrammetrically based on control from an actual field survey performed by the office of Contractors' Line & Grade South, Limited from April to September 2012, and in March of 2013 in U.S. Coastal & Geoidic (NAVD-83) Datum. Those shown more in the background were taken from a previous survey believed to be performed in 2006.

Underground improvements, structures, utilities or encroachments, and any easements related thereto, are not shown hereon unless otherwise noted. The location, extent and sizes of underground utilities are not guaranteed or certified as complete or accurate. Consult with the appropriate utility company or agency prior to designing improvements, commencing demolition, or construction.

This survey was prepared without the benefit of an Abstract of Title and is subject to any state of facts that an accurate examination may reveal.

The property shown hereon may be subject to restrictions, covenants and/or easements, written or implied.

Portions of premises shown hereon are located in the 100 year flood zone designated as Zone 'A' of the Federal Emergency Management Agency (FEMA) National Flood Insurance Program. Refer to Flood Insurance Rate Map (FIRM) Community Panel Number(s) 3610504067F & 3610504070F. Map Effective dates of February 18, 2011.

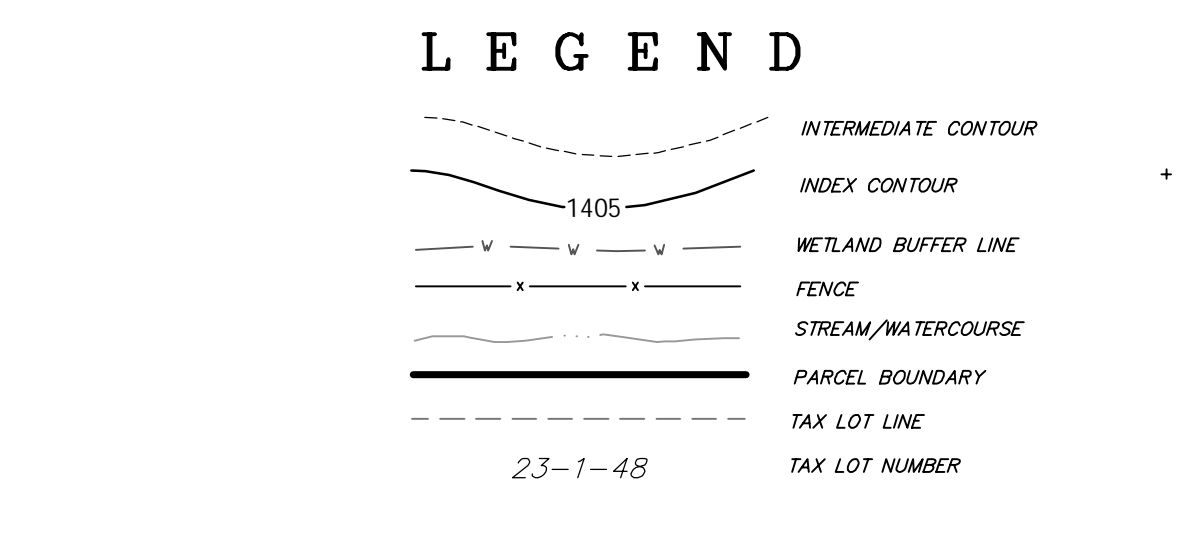
This map only represents a different configuration of parcels as land owned by EPT Concord II, LLC. There has been no boundary change and no additional field location of any improvements or topography since the last revision on 4/10/13 of a certain map entitled "COMPOSITE MAP prepared for EPT CONCORD II, LLC." dated 9/25/12 and last revised 4/10/13.

This map is not intended for conveyance purposes and shall not be used as such.

CONTRACTORS' LINE & GRADE SOUTH, LLC
 23 Nepperhan Avenue
 Elmford, New York 10523
 Phone: (914) 347-3141 Fax: (914) 347-3120
 Office@neandgrade.net

ACREAGE SCHEDULE

PARCEL ID.	TOTAL AREA
Parcel I	8.853 Ac.
Parcel II	0.209 Ac.
Parcel III	1609.865 Ac.
Parcel IV	0.795 Ac.
Parcel V	6.209 Ac.
Parcel VI	9.651 Ac.
Parcel VII	13.797 Ac.
Parcel VIII	20.132 Ac.
Parcel IX	16.856 Ac.
Parcel X	5.705 Ac.



MAP OF LANDS
 OWNED BY
EPT CONCORD II, LLC
 PROPERTY SITUATE IN THE
TOWN OF THOMPSON
COUNTY OF SULLIVAN
 STATE OF NEW YORK
 DATE: FEBRUARY 28, 2014
 GRAPHIC SCALE
 (1 IN FEET)
 1 inch = 500 ft.