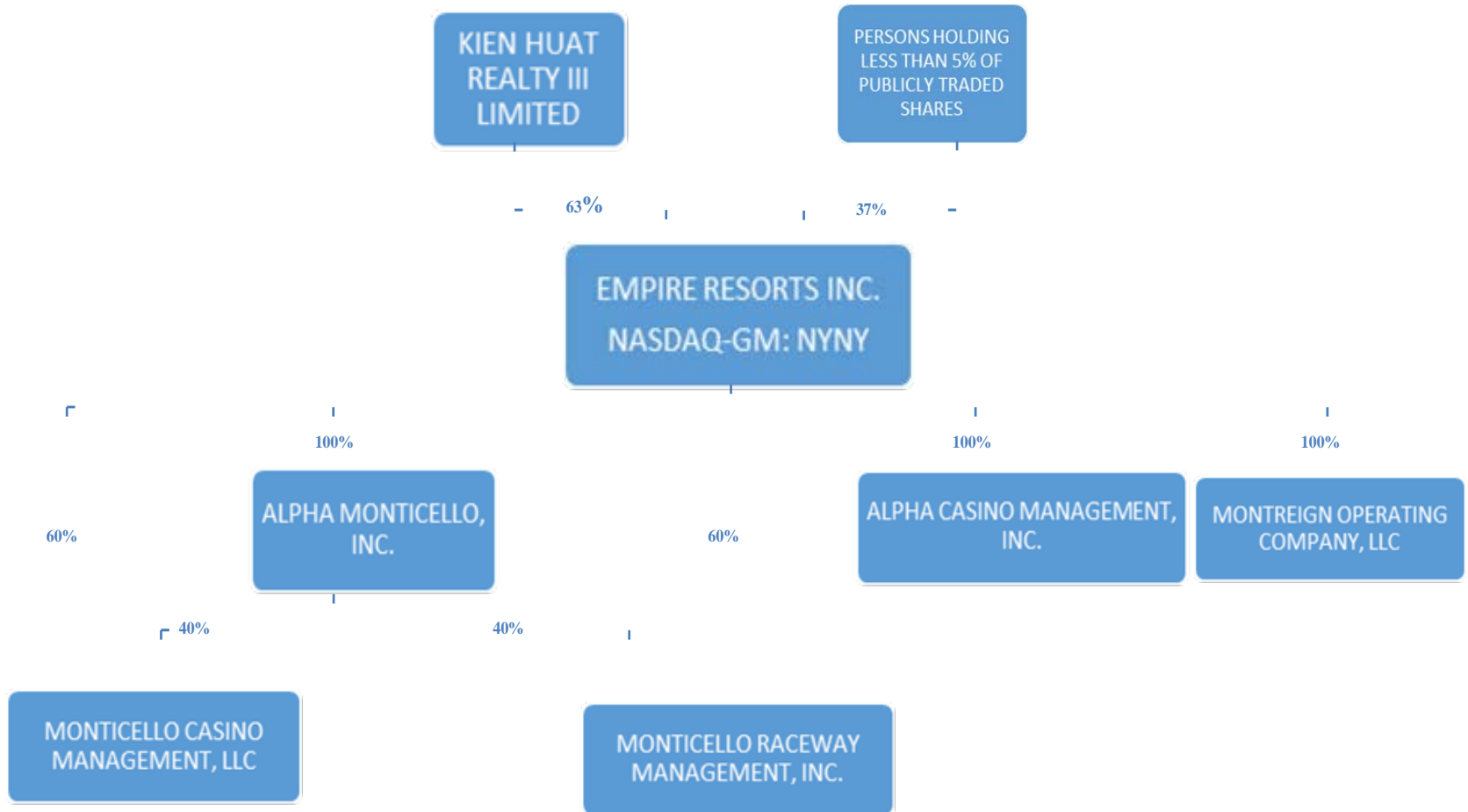
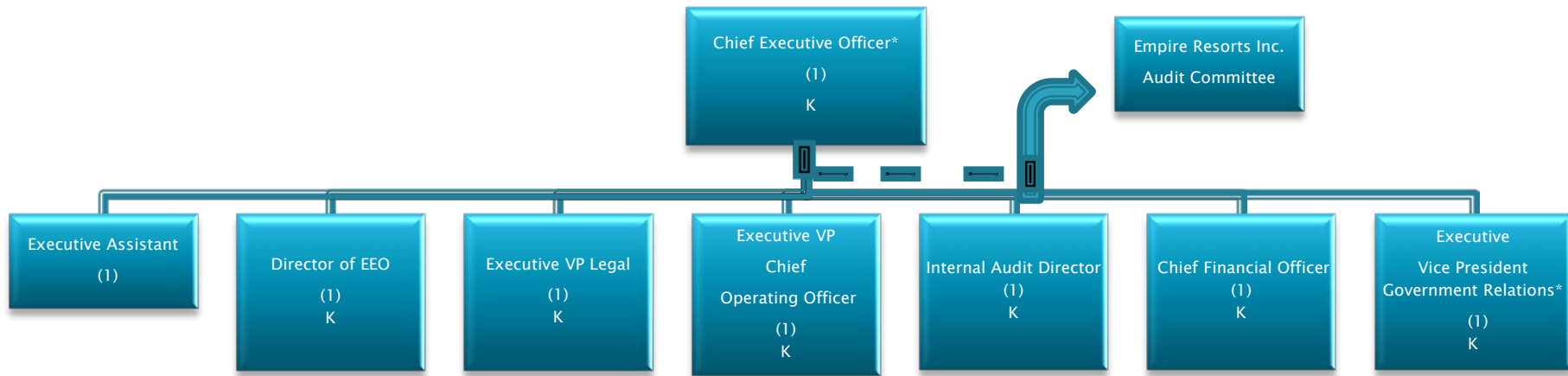


MONTREIGN™  
RESORT CASINO

# Who We Are—Ownership Stake



# CEO



\*All Employees on this page are EMPIRE Employees

\*Primary responsibility will be off property and has no operational or financial oversight

## Legend

(#)=Number of Full-Time Equivalent Employees FTE(s)

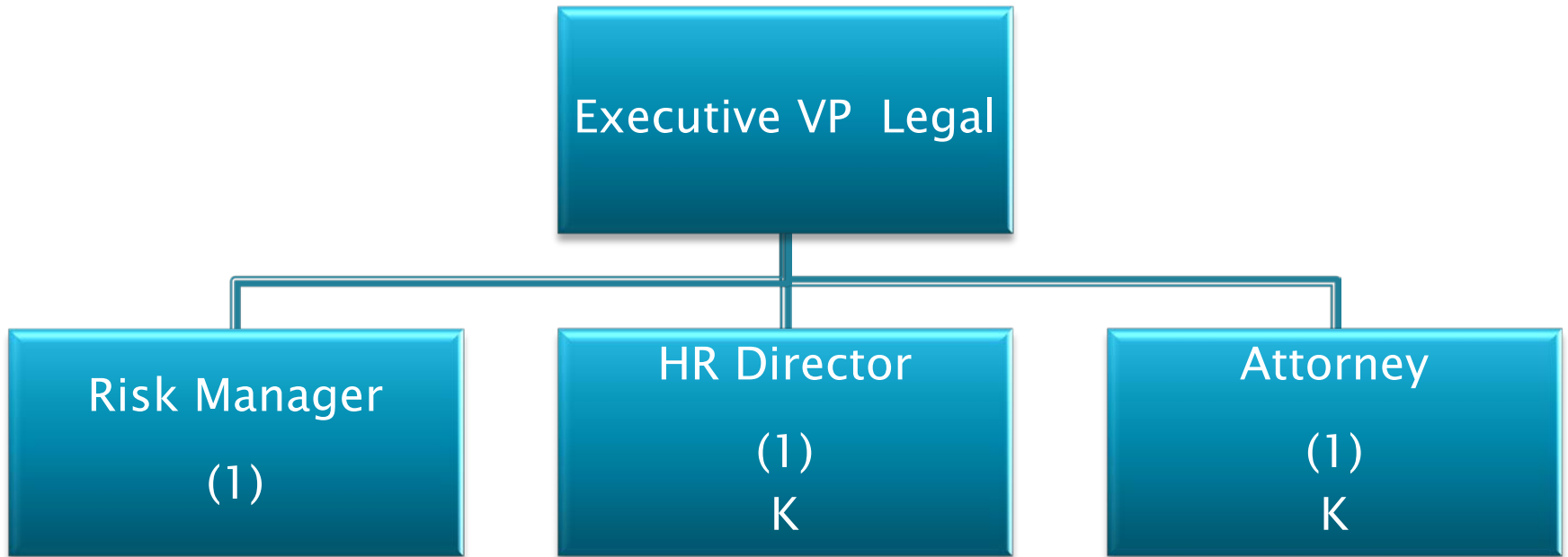
K=Key Employee

# Internal Audit



Legend  
(#)= FTE(s)  
K=Key Employee

# Legal



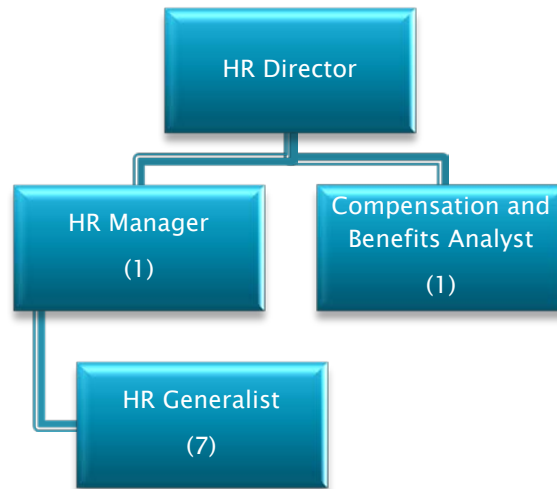
Legend  
(#)= FTE(s)  
K=Key Employee

# Legal-Risk



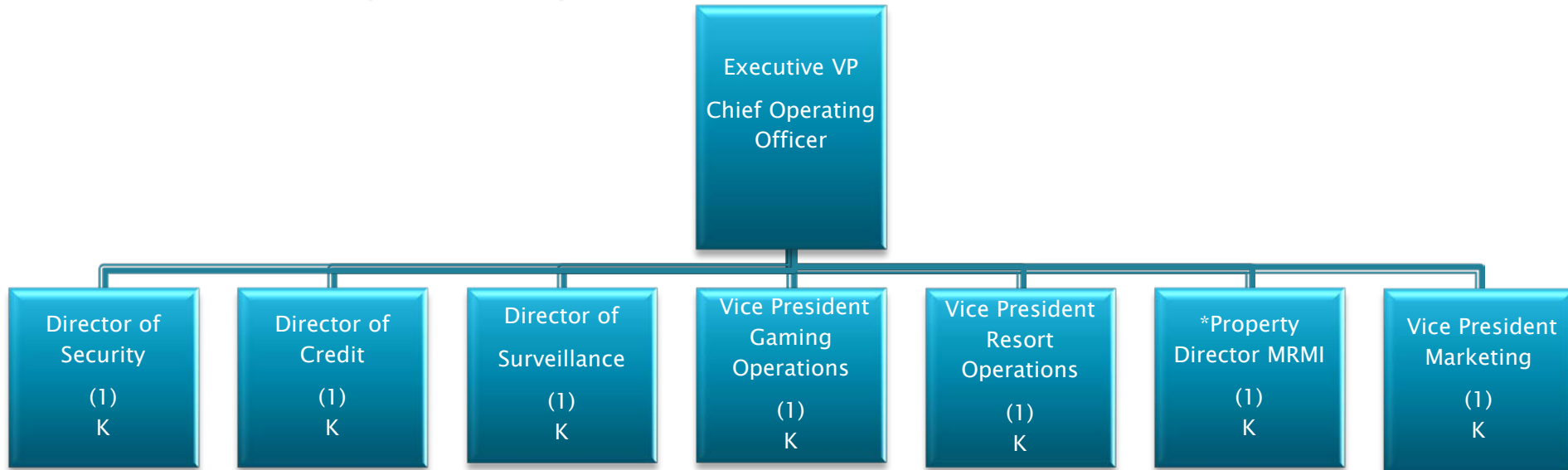
Legend  
(#)= FTE(s)  
K=Key Employee

# Legal-Human Resources



Legend  
(#)= FTE(s)  
K=Key Employee

# Executive VP–Chief Operating Officer(COO)



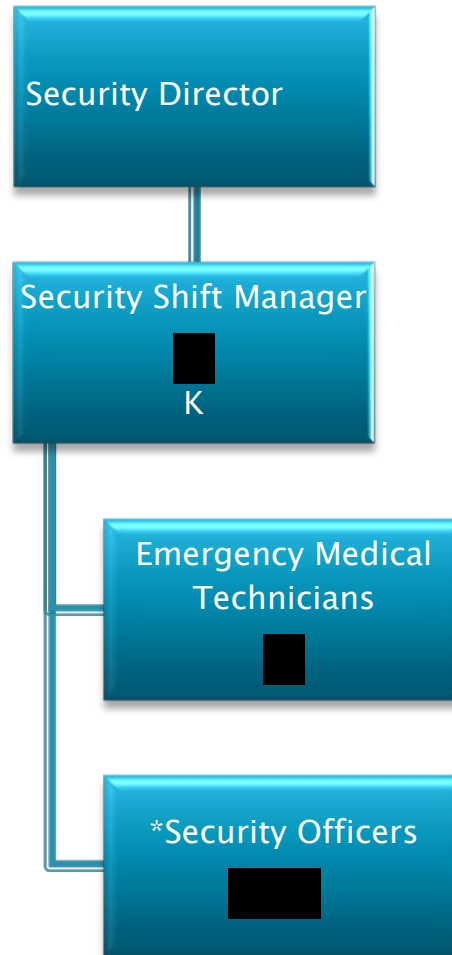
\*Monticello Raceway Management Inc. (MRMI) Employee

Legend  
(#)= FTE(s)  
K=Key Employee



# Security

Confidential

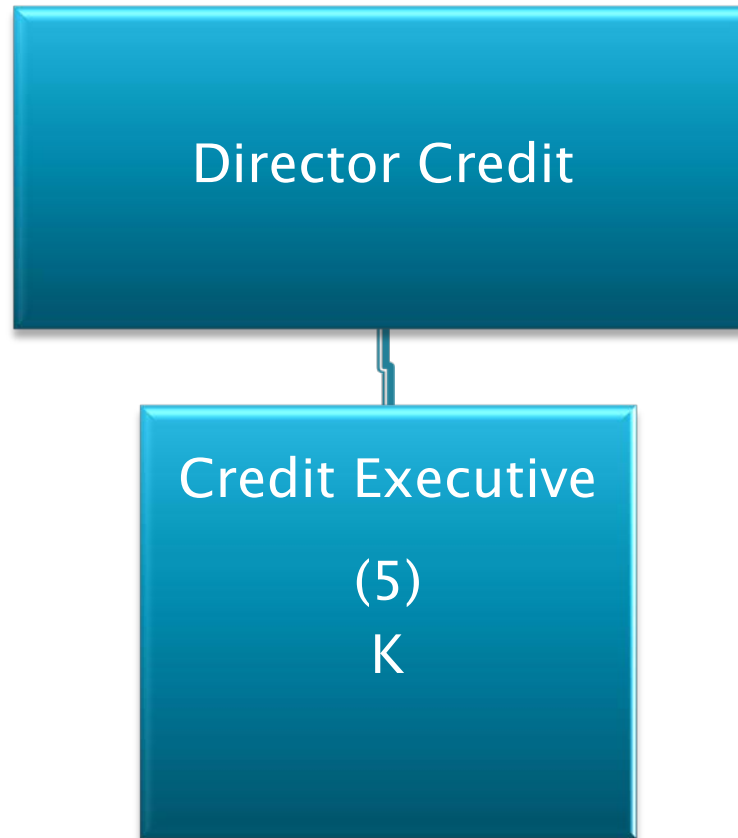


\*Selected Security Officers may act in a Dual-Rate Shift Manager capacity as needed.

\*\*Some Security Officers will be MRMI employees

Legend  
(#)= FTE(s)  
K=Key Employee

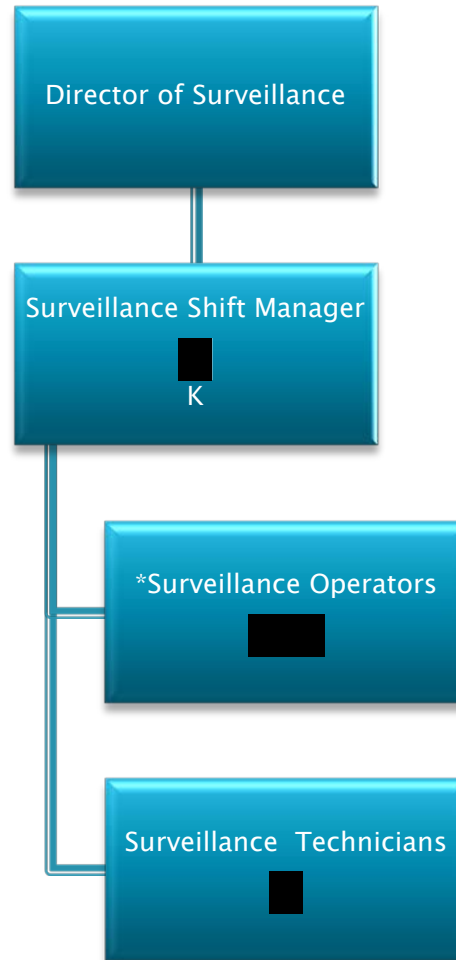
# Credit



Legend  
(#)= FTE(s)  
K=Key Employee

# Surveillance

Confidential

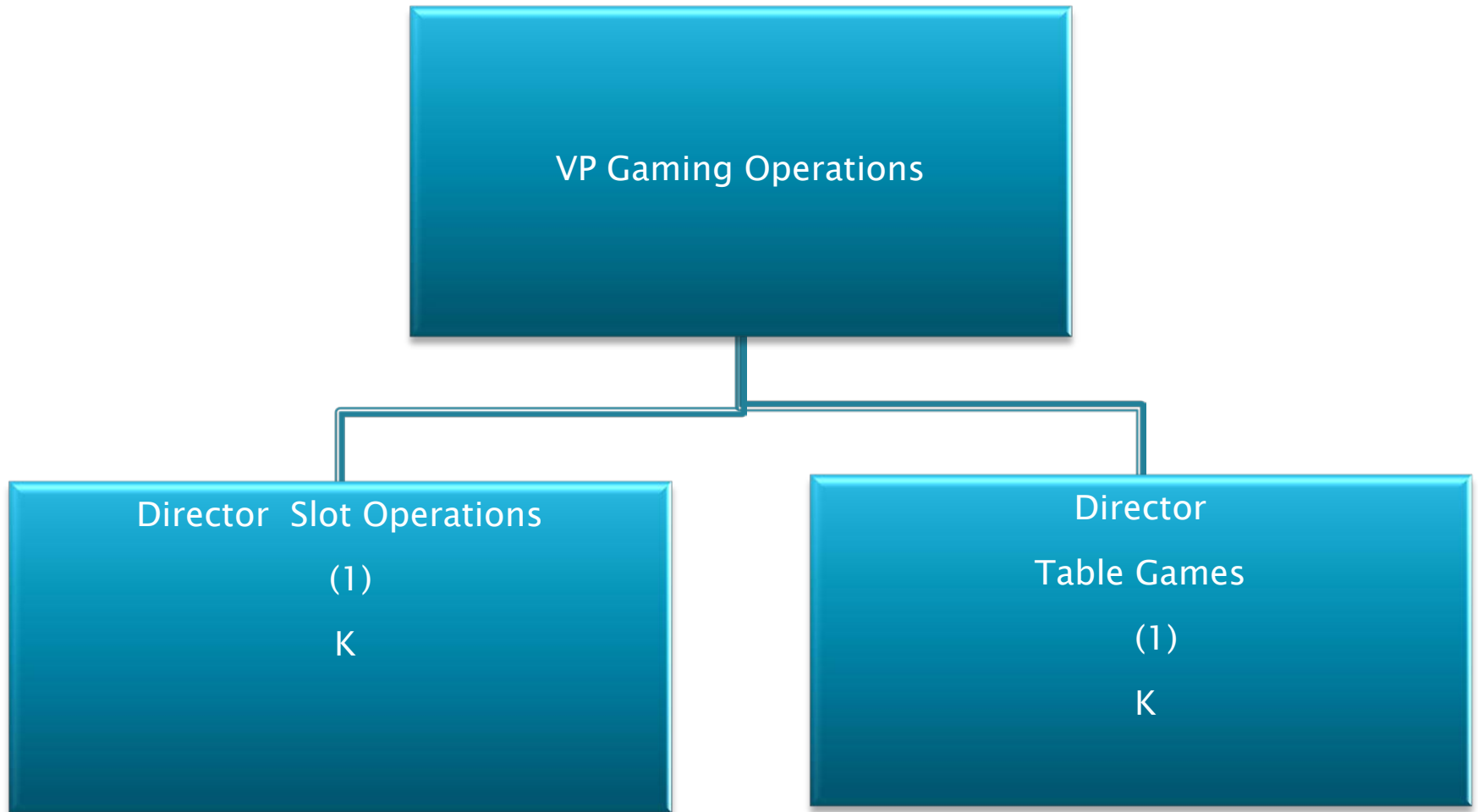


\*Selected Surveillance Operators may act in a Dual-Rate Shift Manager capacity as needed

\*\*Some Surveillance Operators will be MRMI employees

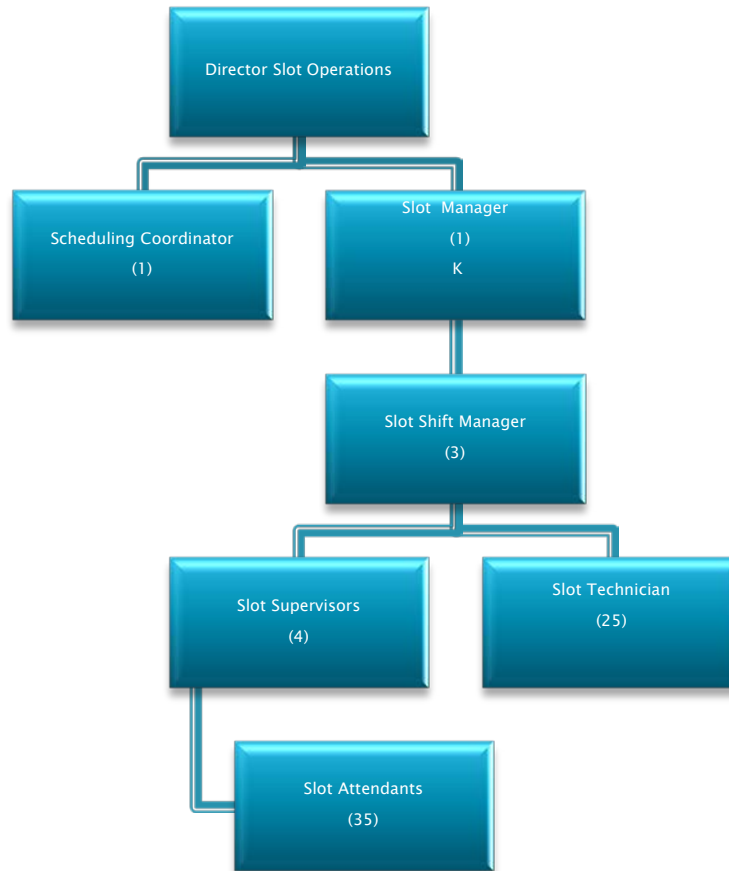
Legend  
(#)= FTE(s)  
K=Key Employee

# VP Gaming Operations



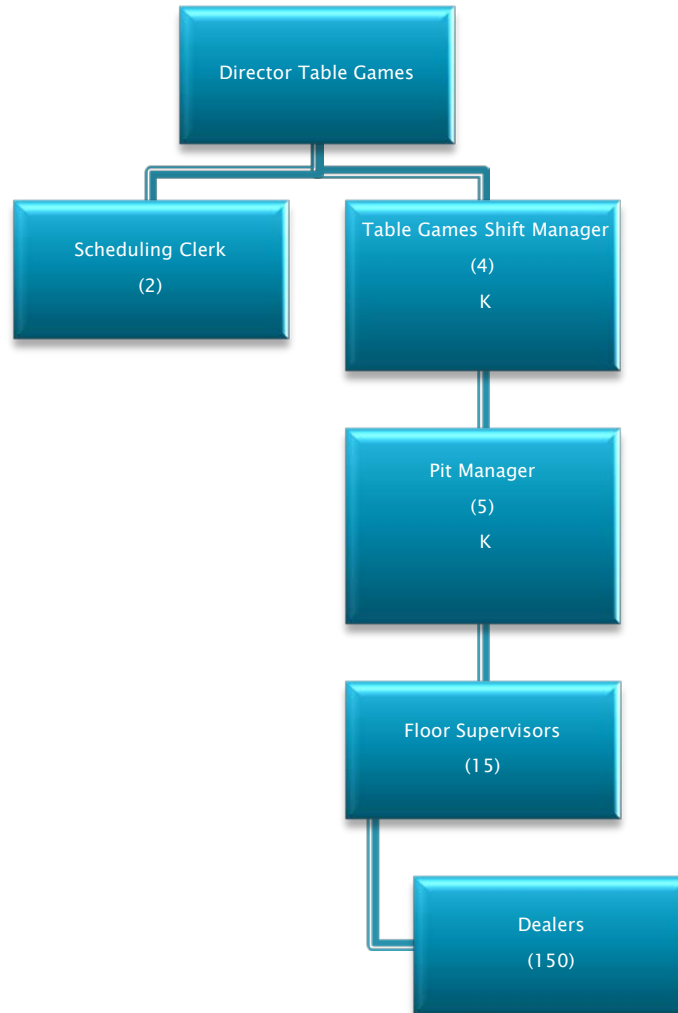
Legend  
(#)= FTE(s)  
K=Key Employee

# Slots



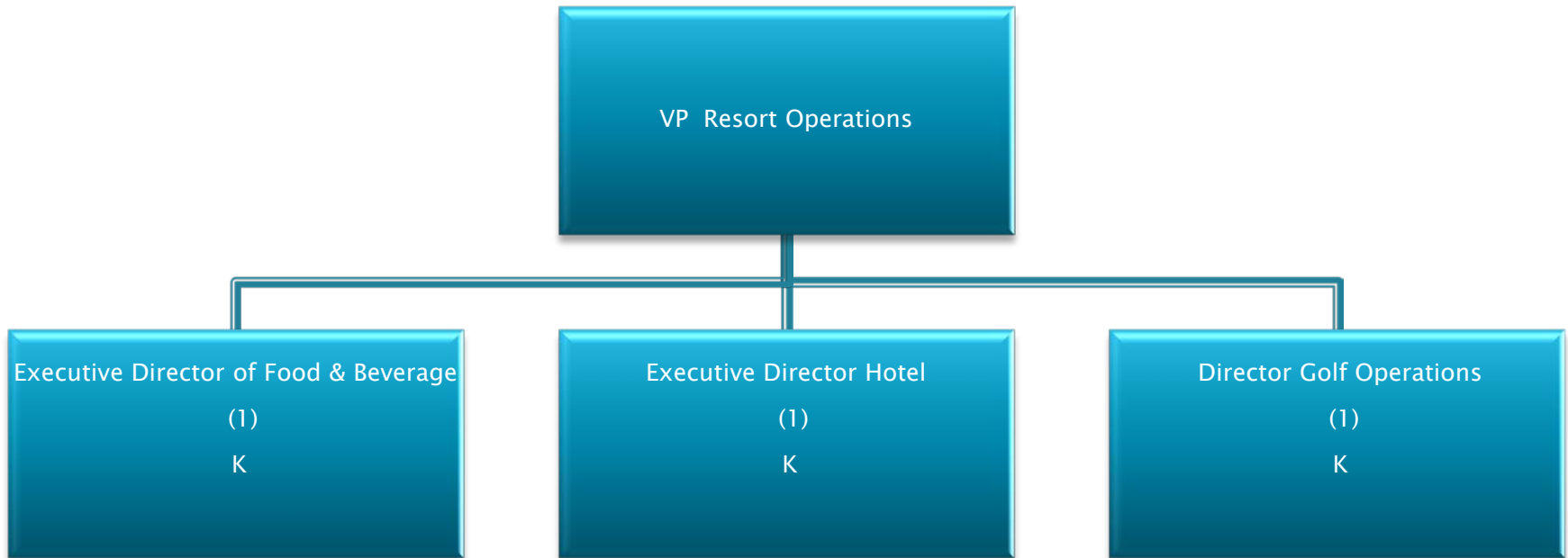
Legend  
(#)= FTE(s)  
K=Key Employee

# Table Games



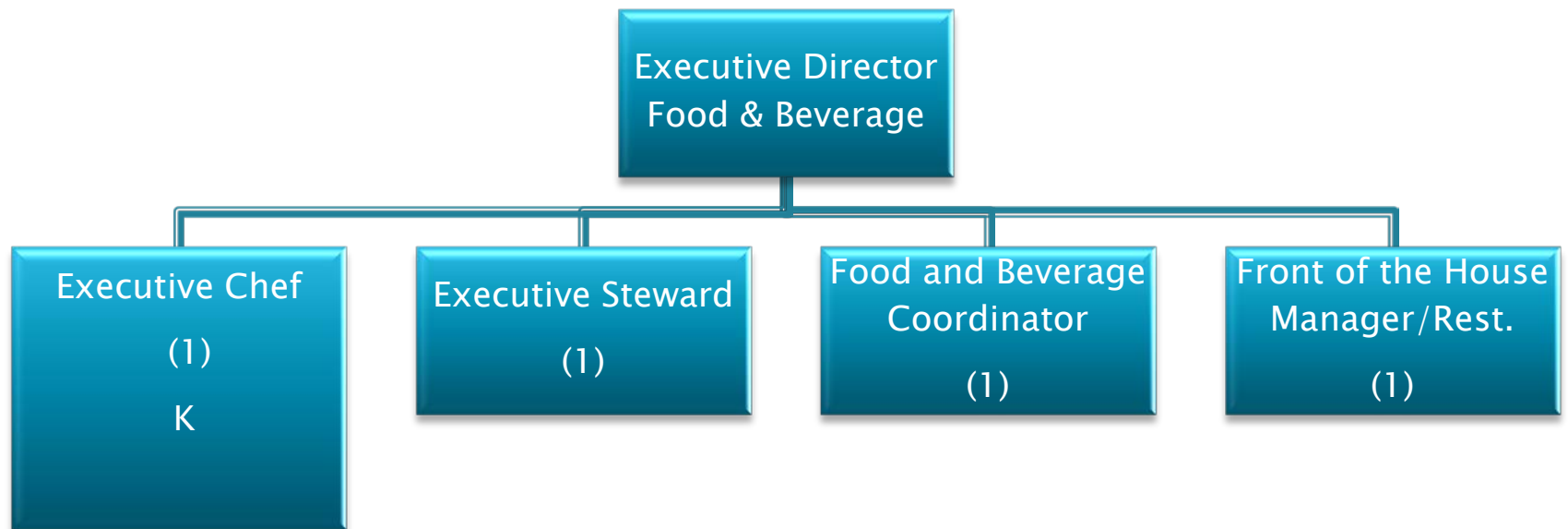
Legend  
(#)= FTE(s)  
K=Key Employee

# VP Resort Operations



Legend  
(#)= FTE(s)  
K=Key Employee

# Food & Beverage



Legend  
(#)= FTE(s)  
K=Key Employee

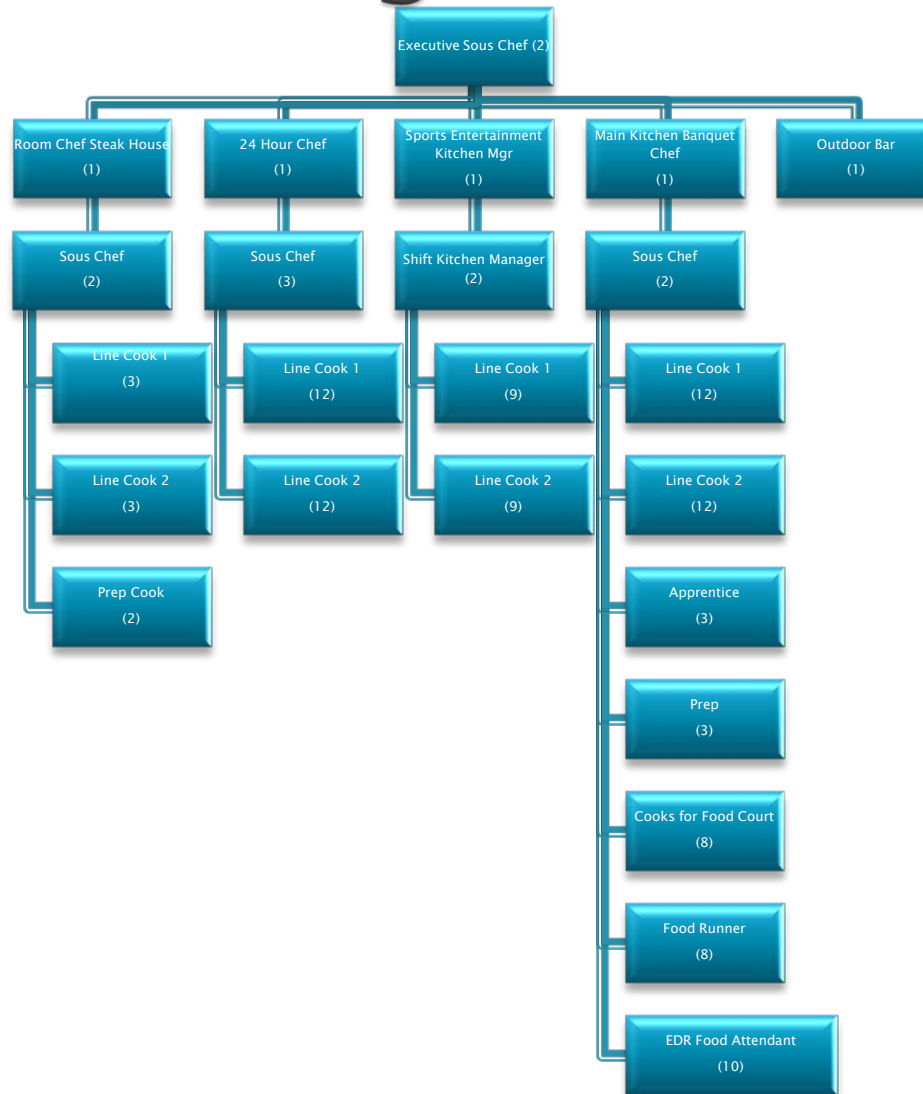


# Food & Beverage



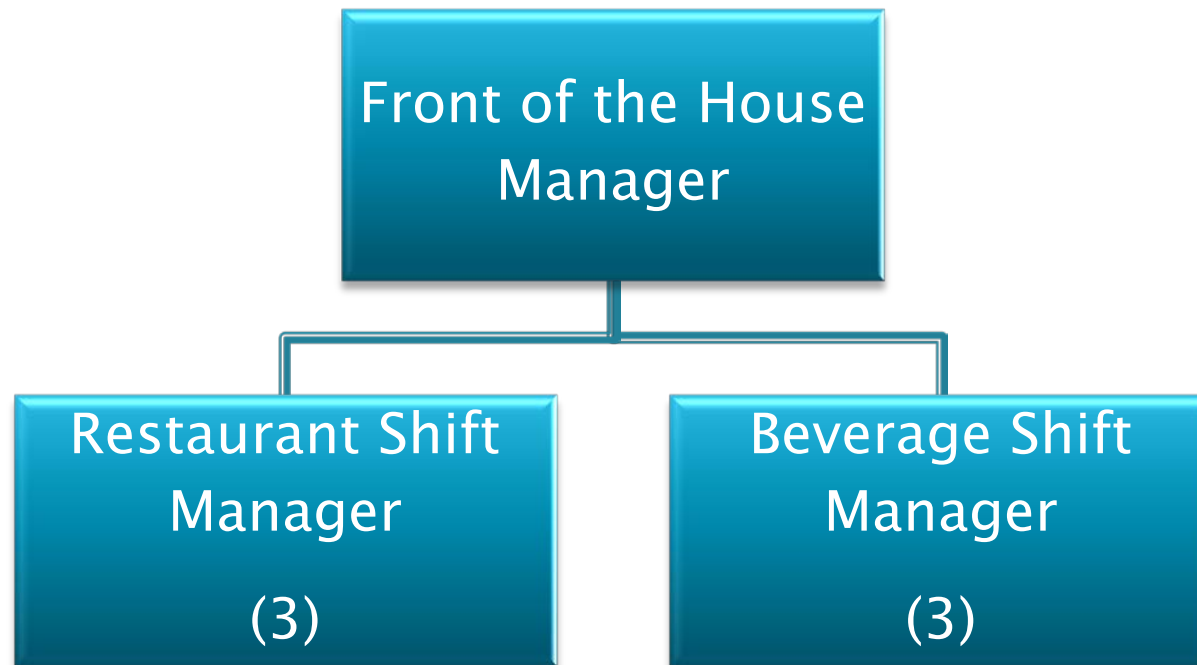
Legend  
(#)= FTE(s)  
K=Key Employee

# Food & Beverage



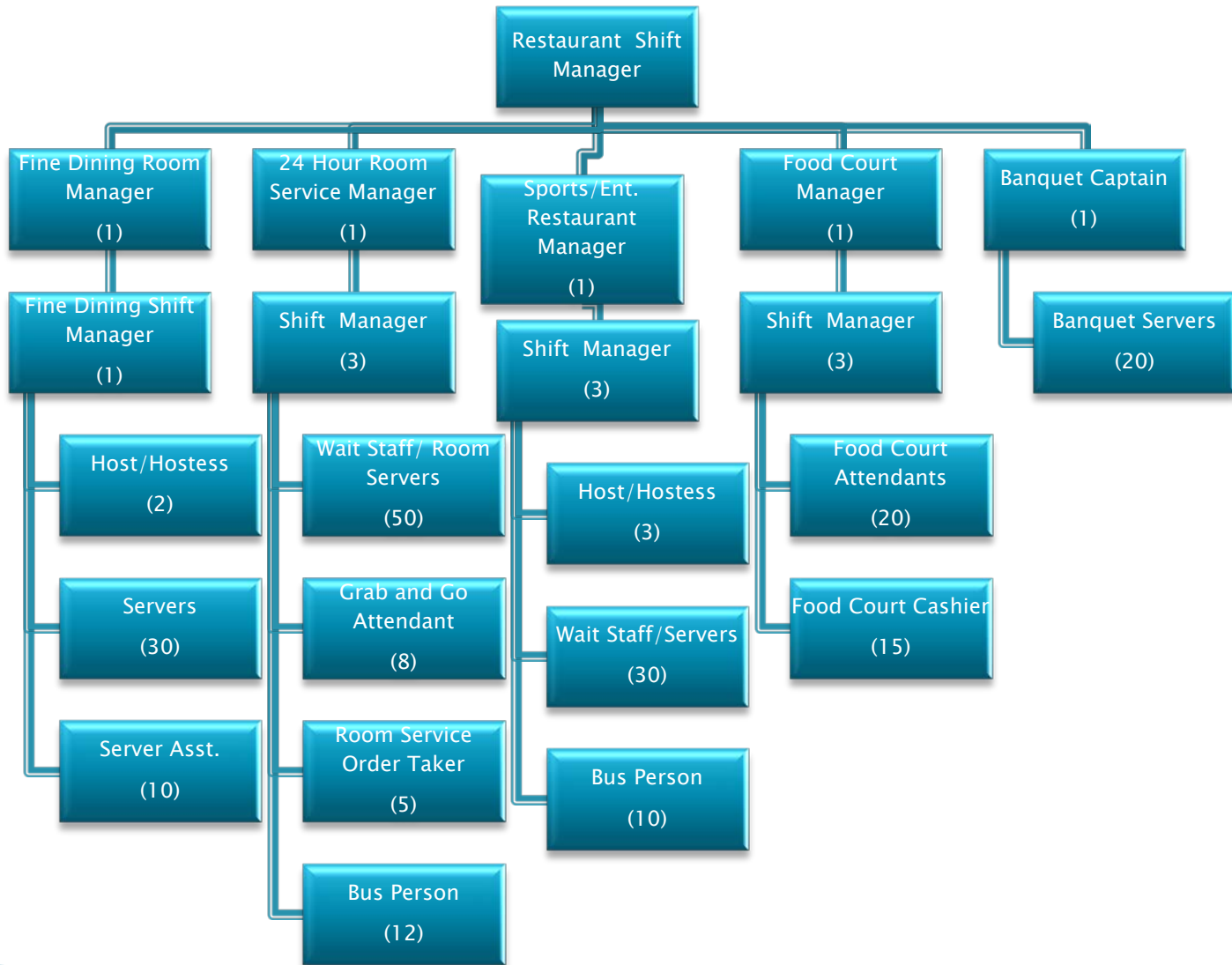
Legend  
(#)= FTE(s)  
K=Key Employee

# Food & Beverage



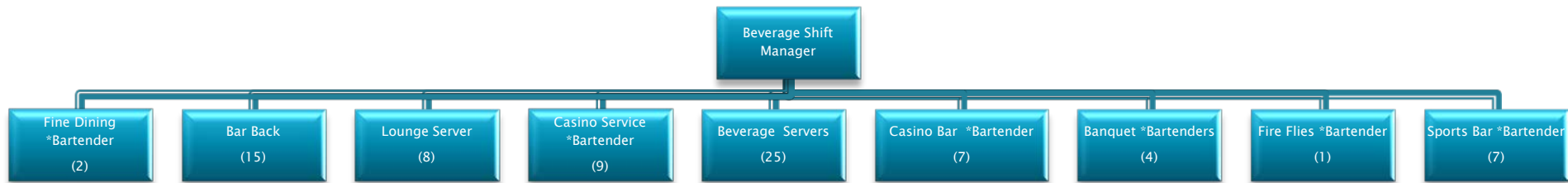
Legend  
(#)= FTE(s)  
K=Key Employee

# Food & Beverage



Legend  
 (#)= FTE(s)  
 K=Key Employee

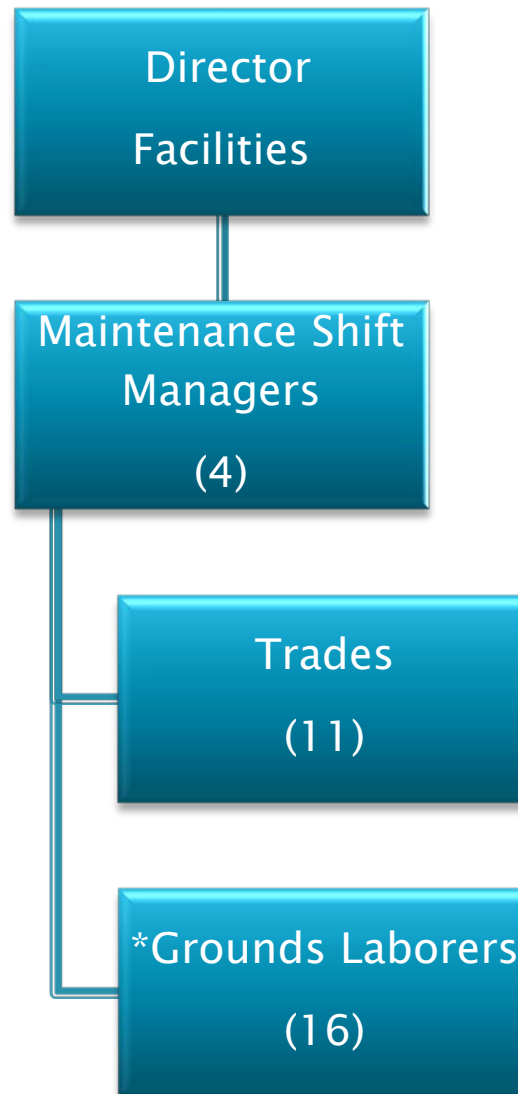
# Food & Beverage



\*All Bartenders and BarBacks can be assigned/rotated to any area.

Legend  
(#)= FTE(s)  
K=Key Employee

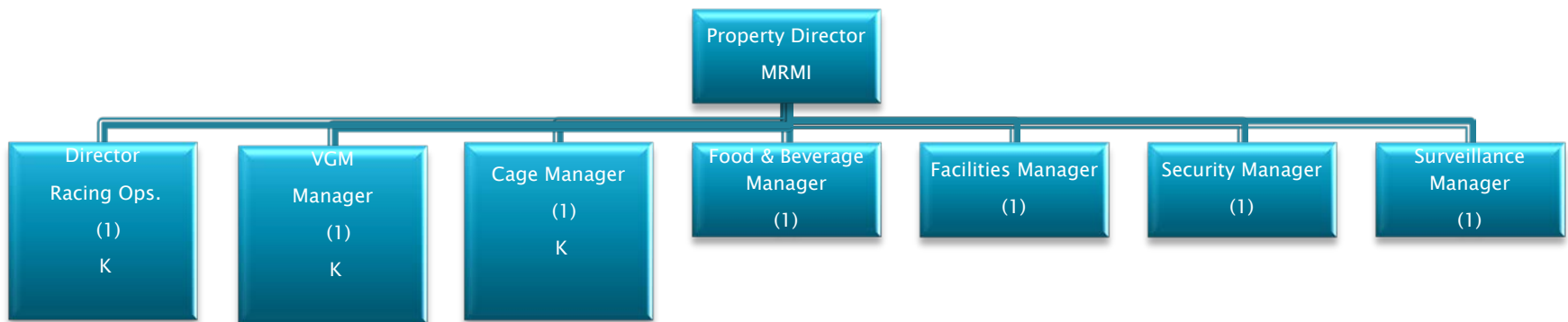
# Facilities



\*May be assigned to Golf course.

Legend  
(#)= FTE(s)  
K=Key Employee

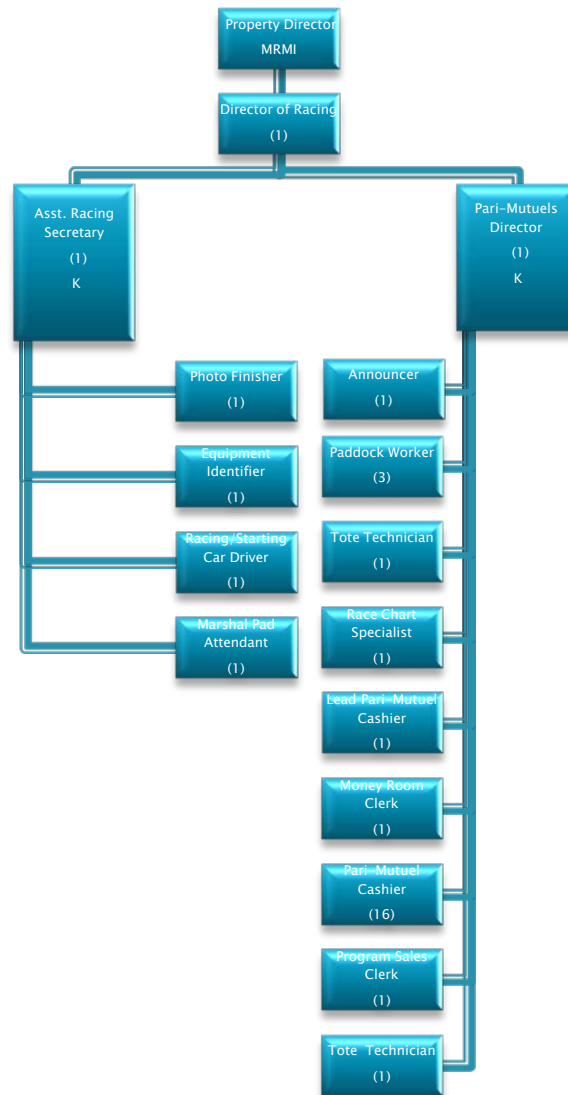
# MRMI Operations



All employees on this page are MRMI employees

Legend  
(#)= FTE(s)  
K=Key Employee

# MRMI Operations (Racing)

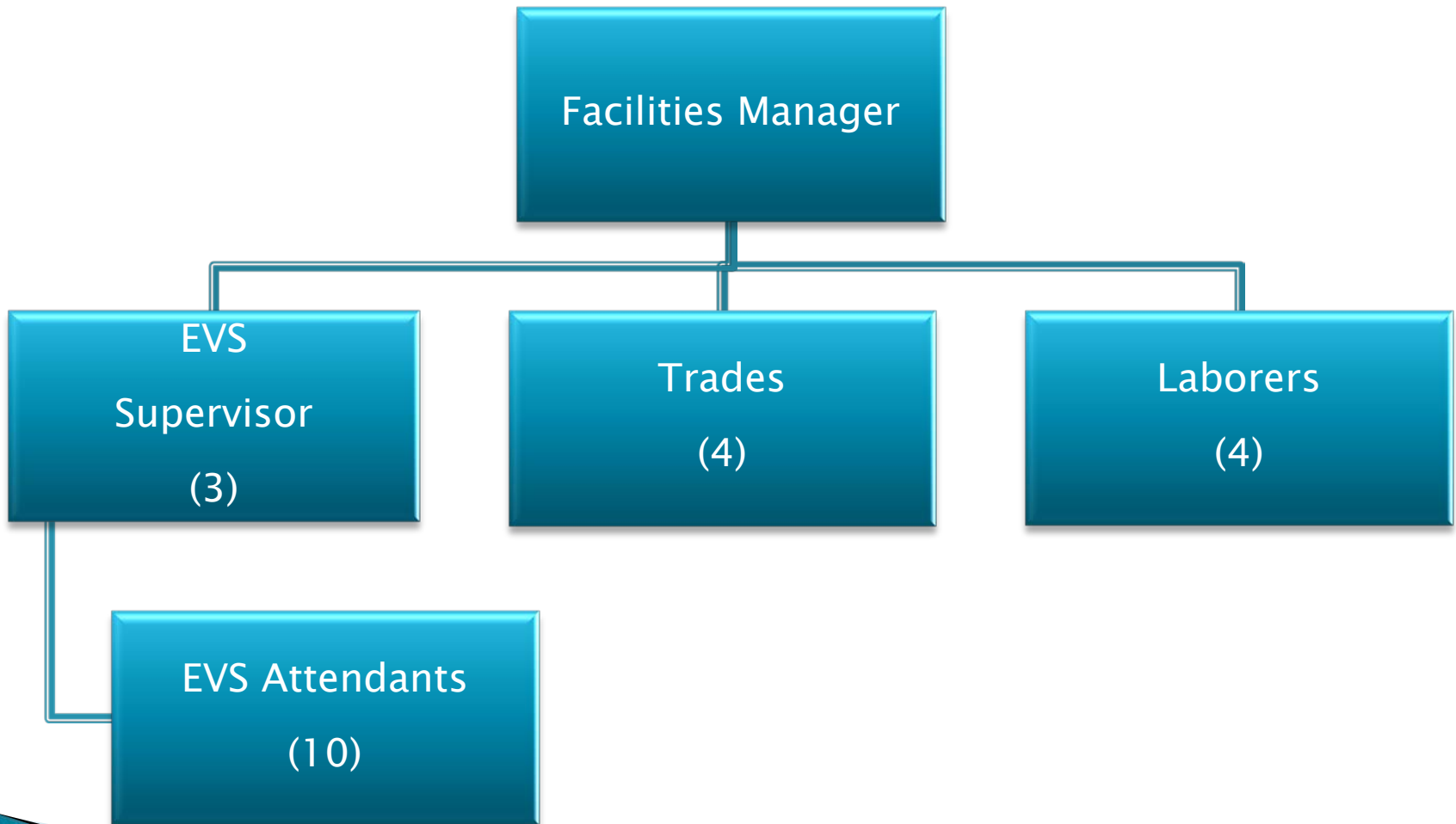


All employees on this page are MRMI employees

Legend  
(#)= FTE(s)  
K=Key Employee



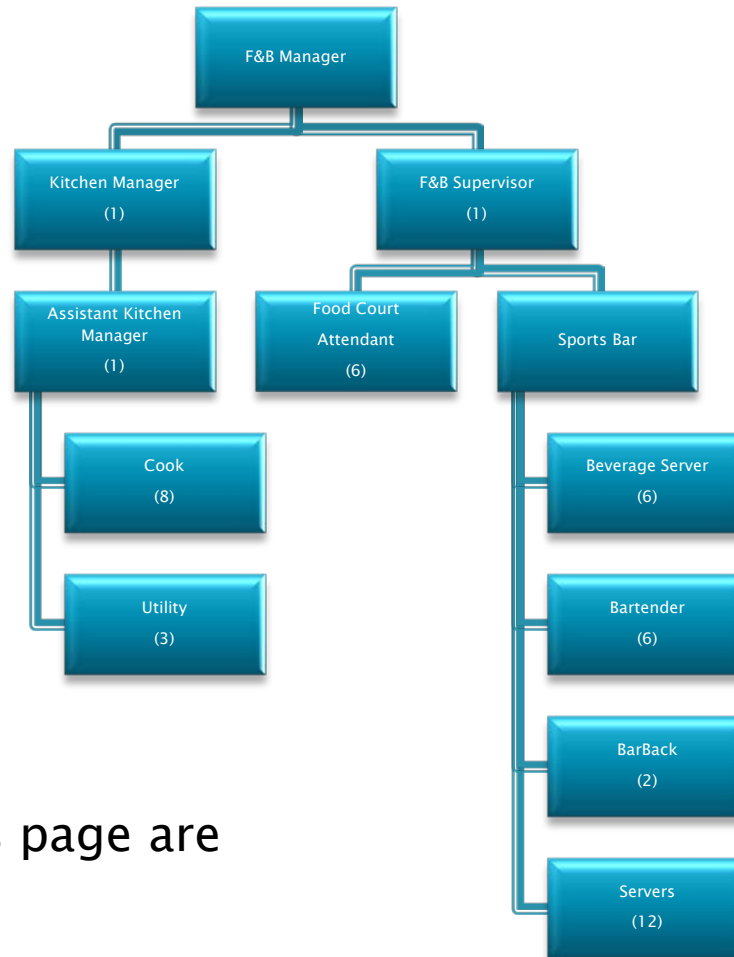
# MRMI Operations(Facilities)



All employees on this page are MRMI employees

Legend  
(#)= FTE(s)  
K=Key Employee

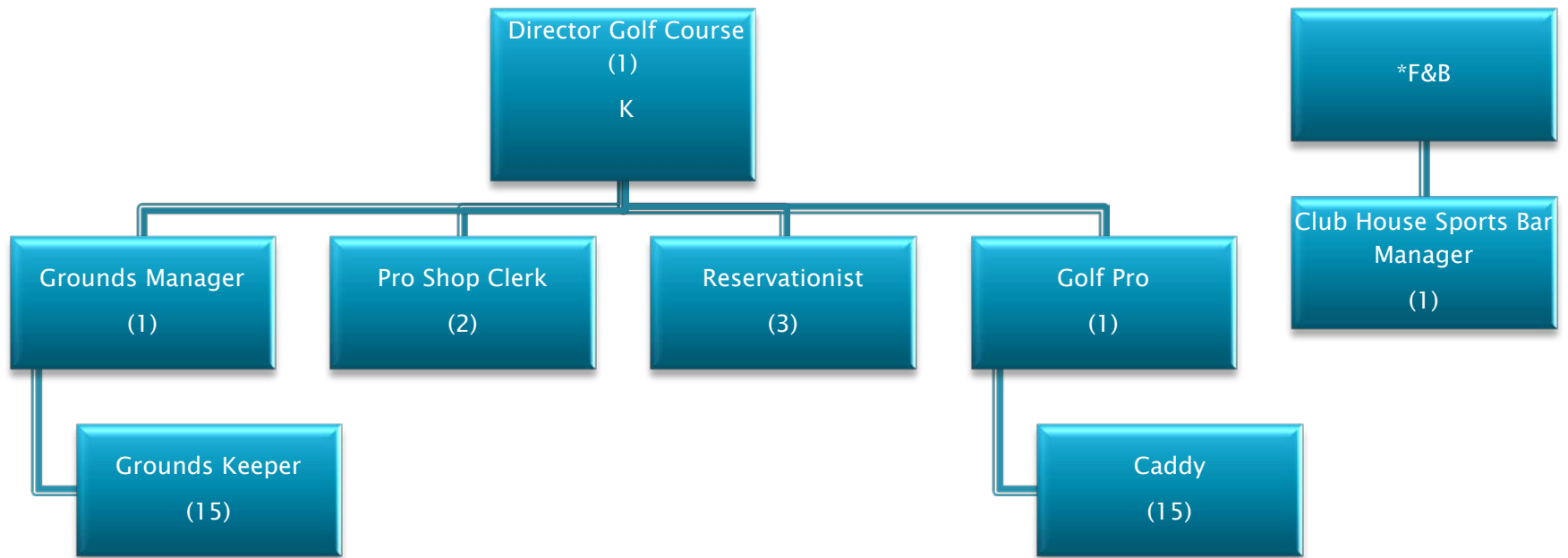
# MRMI Operations(F&B)



All employees on this page are MRMI employees

Legend  
(#)= FTE(s)  
K=Key Employee

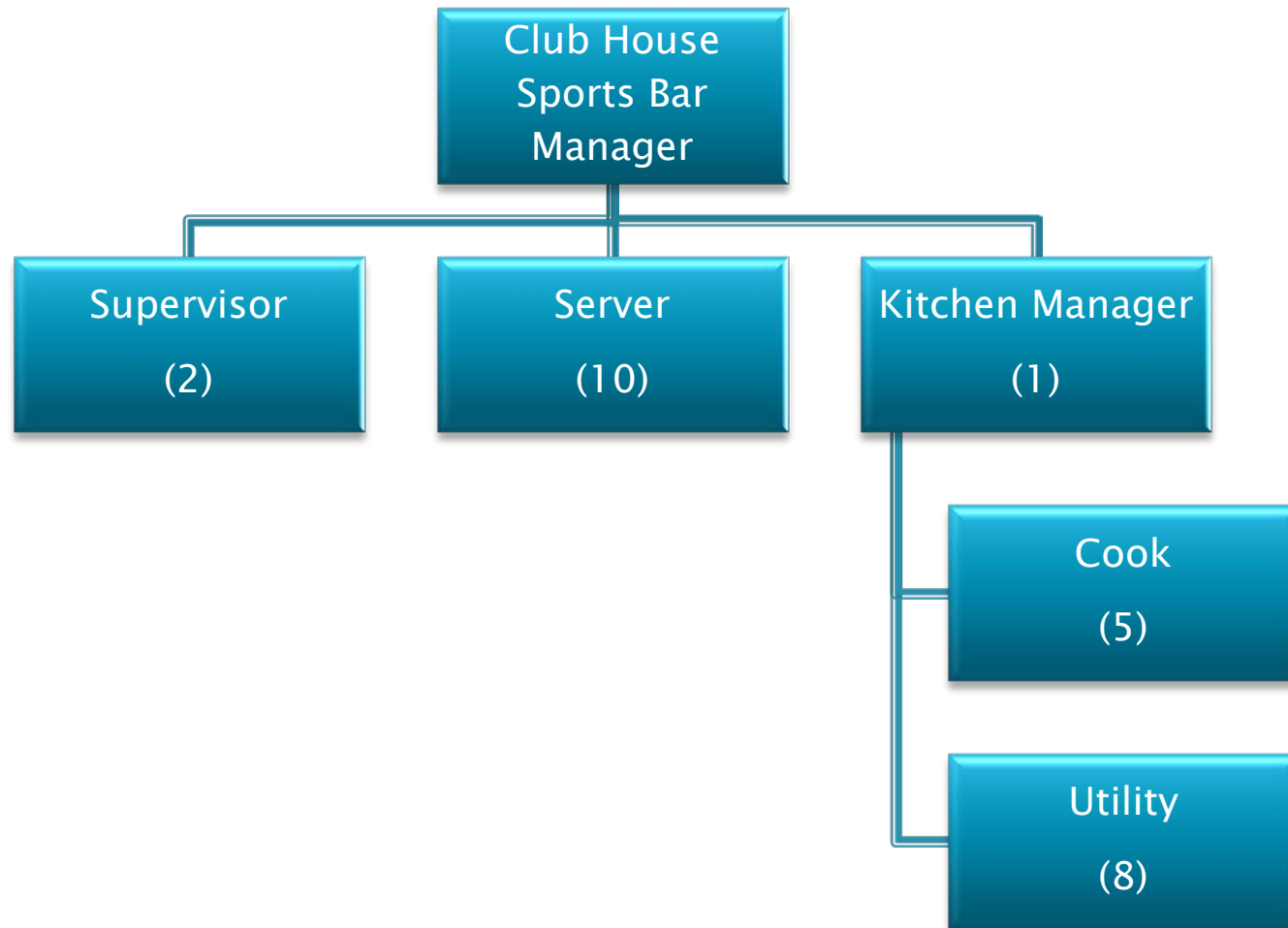
# Golf



\*Reports to F&B

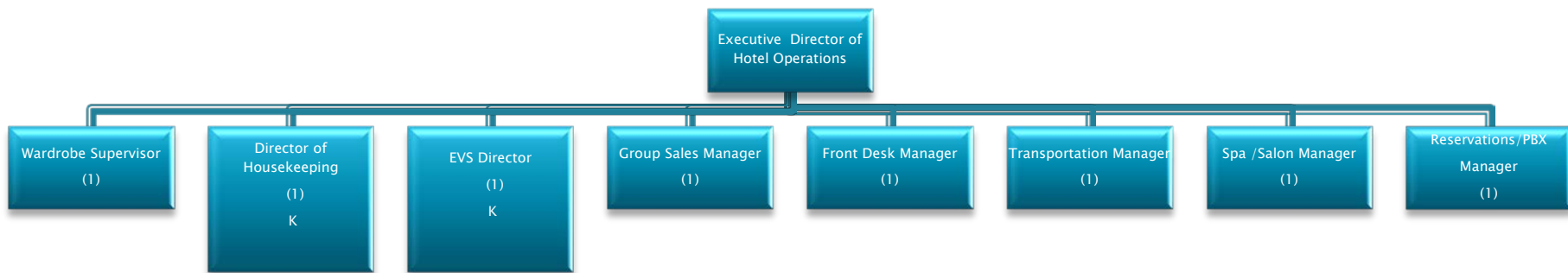
Legend  
(#)= FTE(s)  
K=Key Employee

# Golf



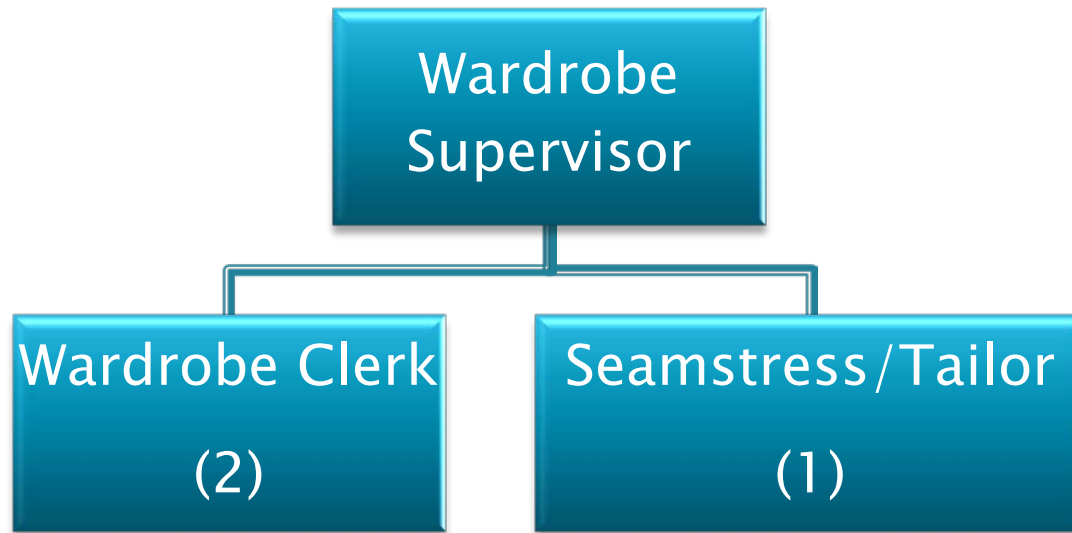
Legend  
(#)= FTE(s)  
K=Key Employee

# Hotel



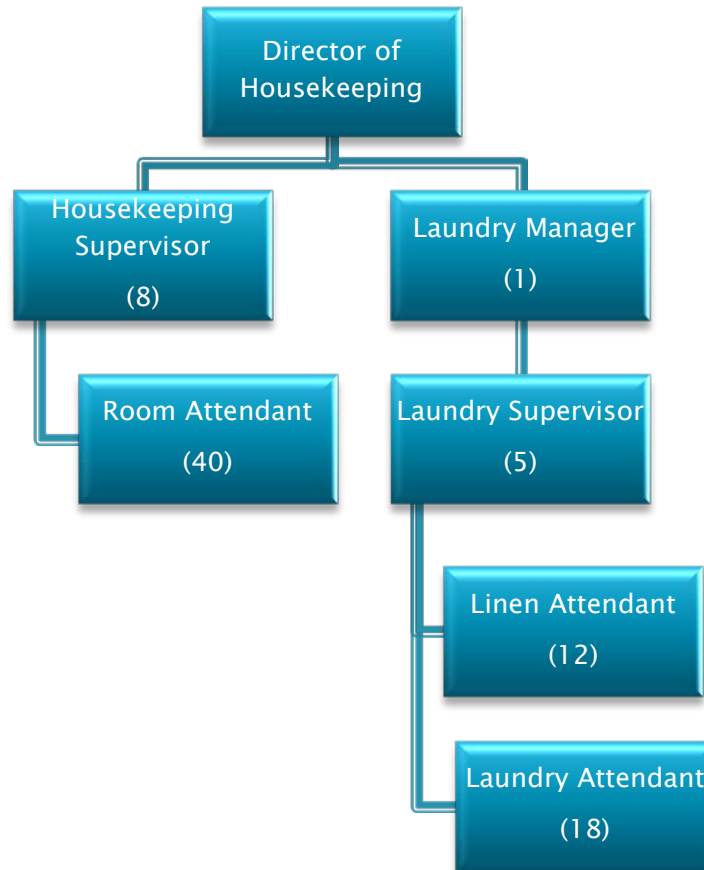
Legend  
(#)= FTE(s)  
K=Key Employee

# Hotel



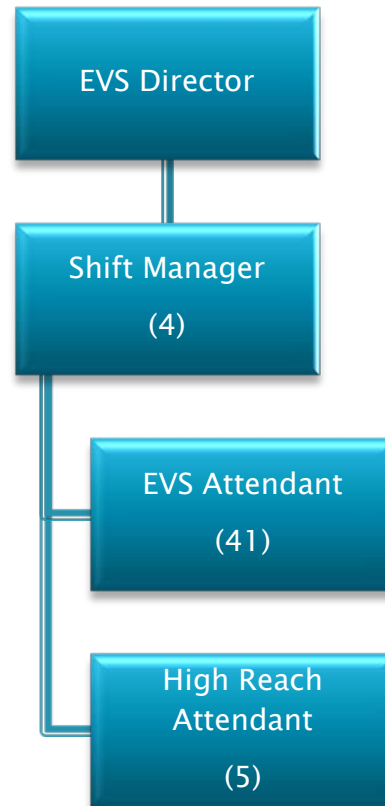
Legend  
(#)= FTE(s)  
K=Key Employee

# Hotel



Legend  
(#)= FTE(s)  
K=Key Employee

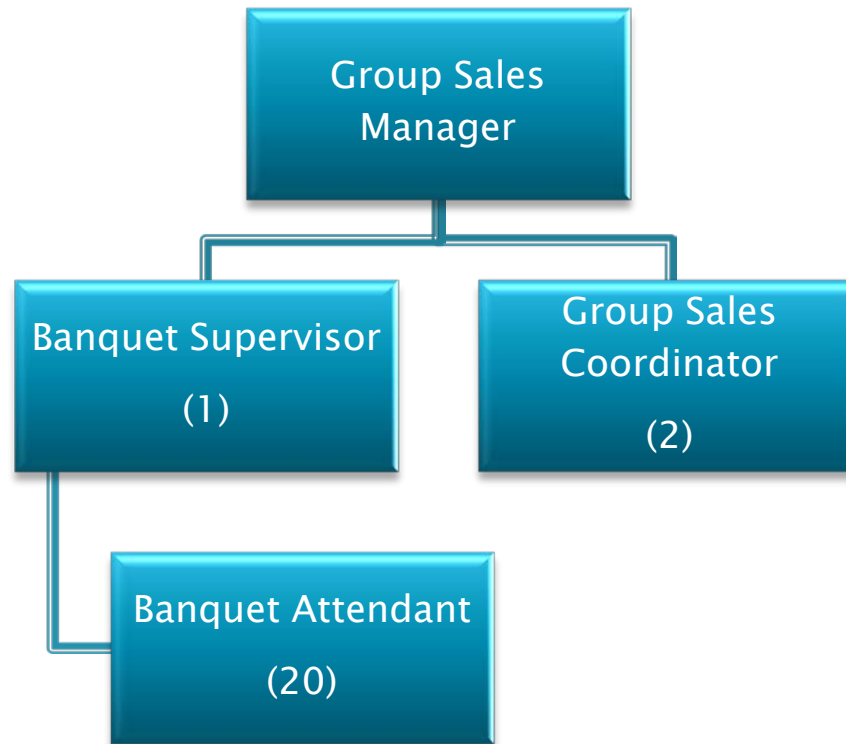
# Hotel



Legend  
(#)= FTE(s)  
K=Key Employee

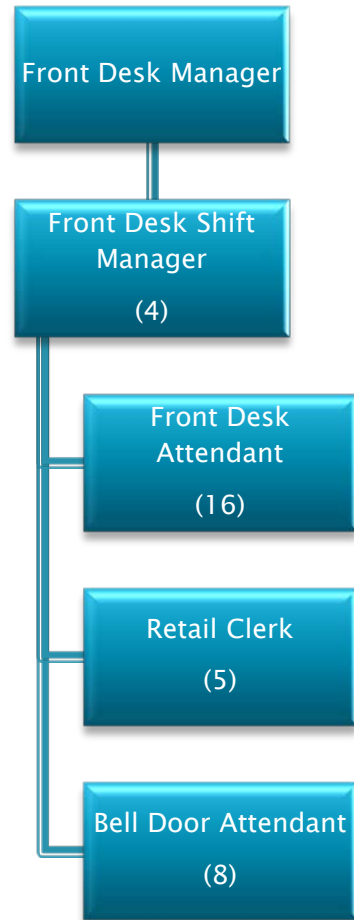


# Hotel



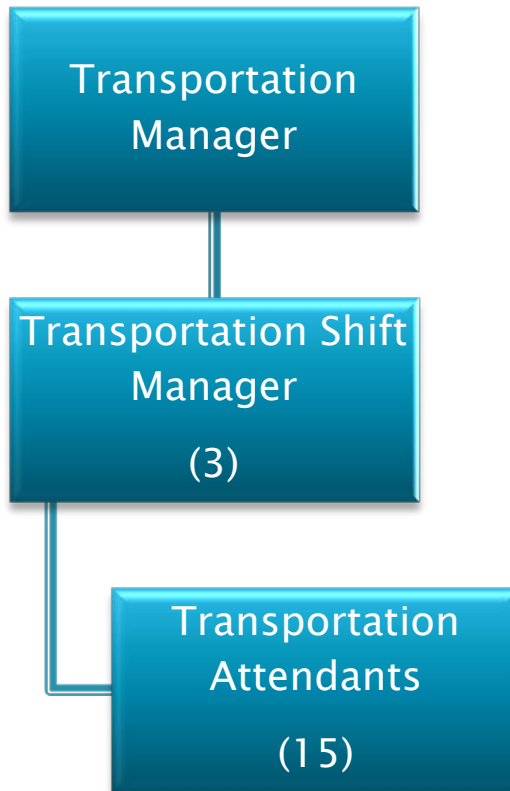
Legend  
(#)= FTE(s)  
K=Key Employee

# Hotel



Legend  
(#)= FTE(s)  
K=Key Employee

# Hotel



Legend  
(#)= FTE(s)  
K=Key Employee

# Hotel



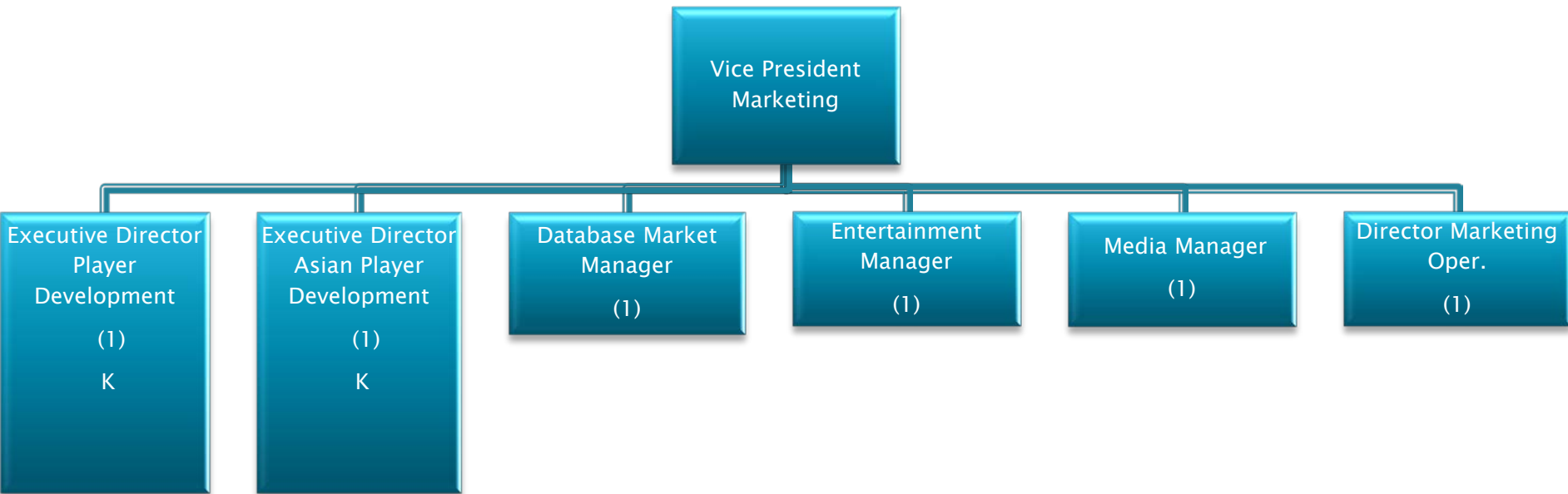
Legend  
(#)= FTE(s)  
K=Key Employee

# Hotel



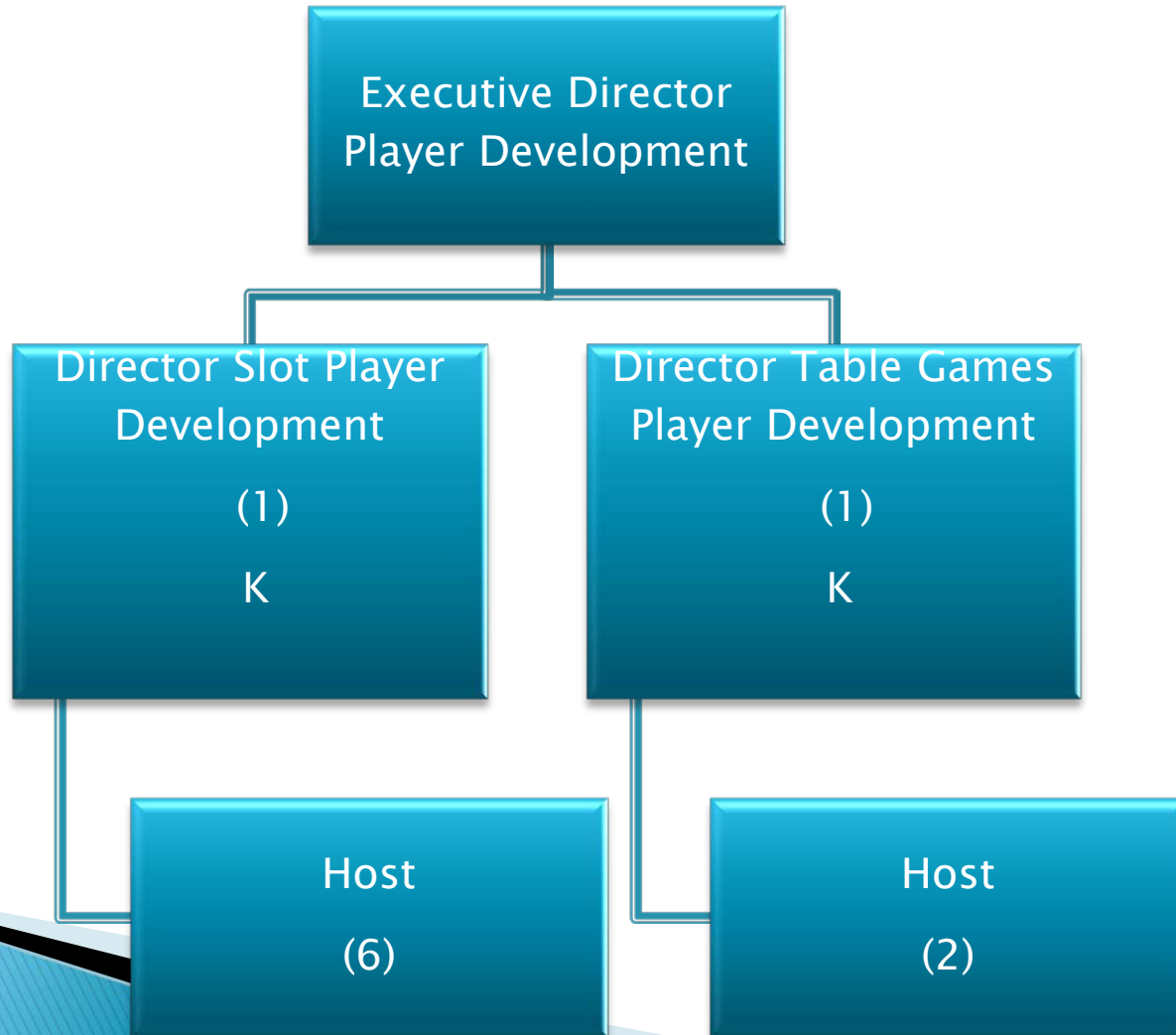
Legend  
(#)= FTE(s)  
K=Key Employee

# Marketing



Legend  
(#)= FTE(s)  
K=Key Employee

# Marketing



Legend  
(#)= FTE(s)  
K=Key Employee

# Marketing

```
graph TD; A[Executive Director Player Asian Player Development] --- B[Asian Player Development (3)];
```

Executive Director Player Asian Player Development

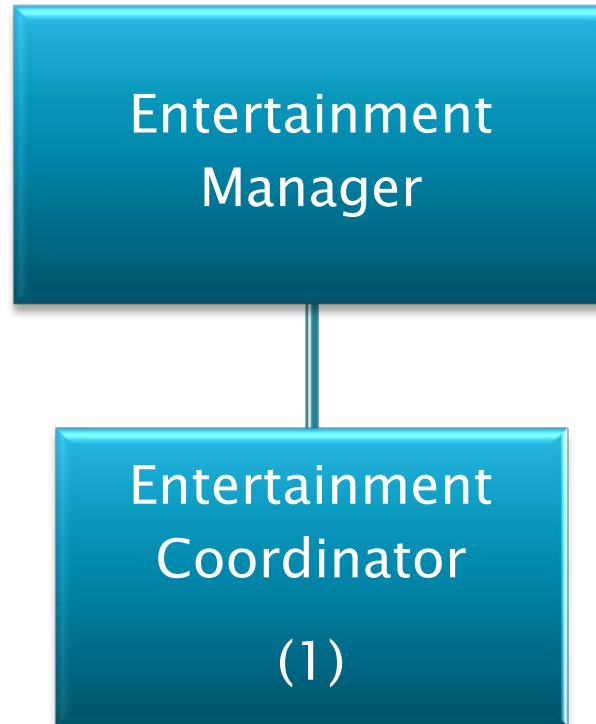
Asian Player Development

(3)

Legend  
(#)= FTE(s)  
K=Key Employee

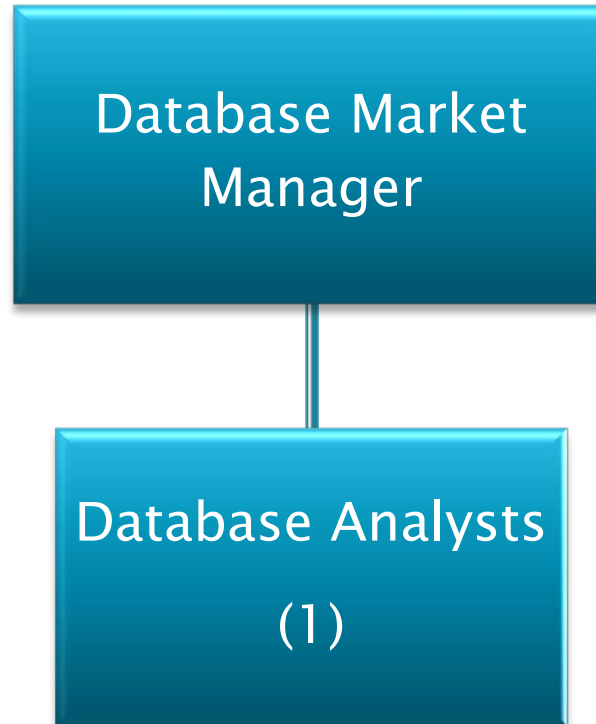


# Marketing



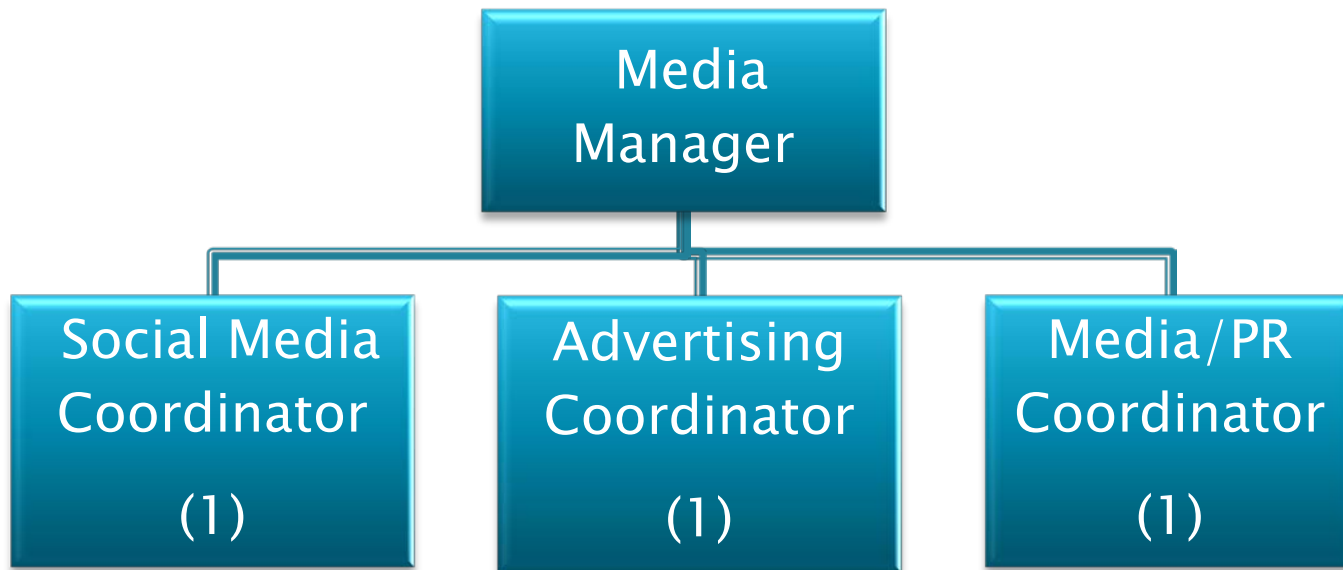
Legend  
(#)= FTE(s)  
K=Key Employee

# Marketing



Legend  
(#)= FTE(s)  
K=Key Employee

# Marketing



Legend  
(#)= FTE(s)  
K=Key Employee

# Marketing



Legend  
(#)= FTE(s)  
K=Key Employee

# Marketing(Player's Club)



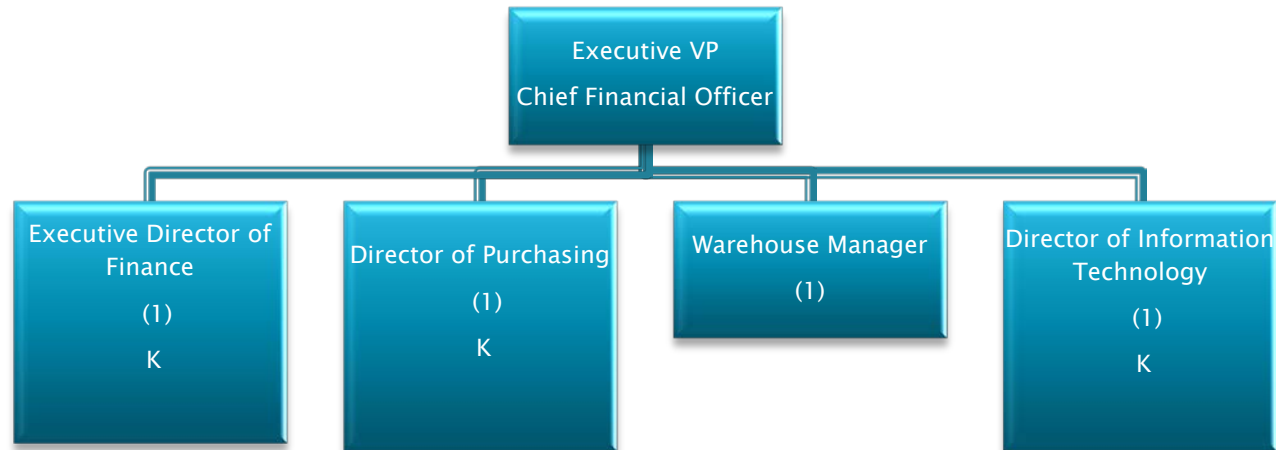
Legend  
(#)= FTE(s)  
K=Key Employee

# Marketing(Bus Marketing)



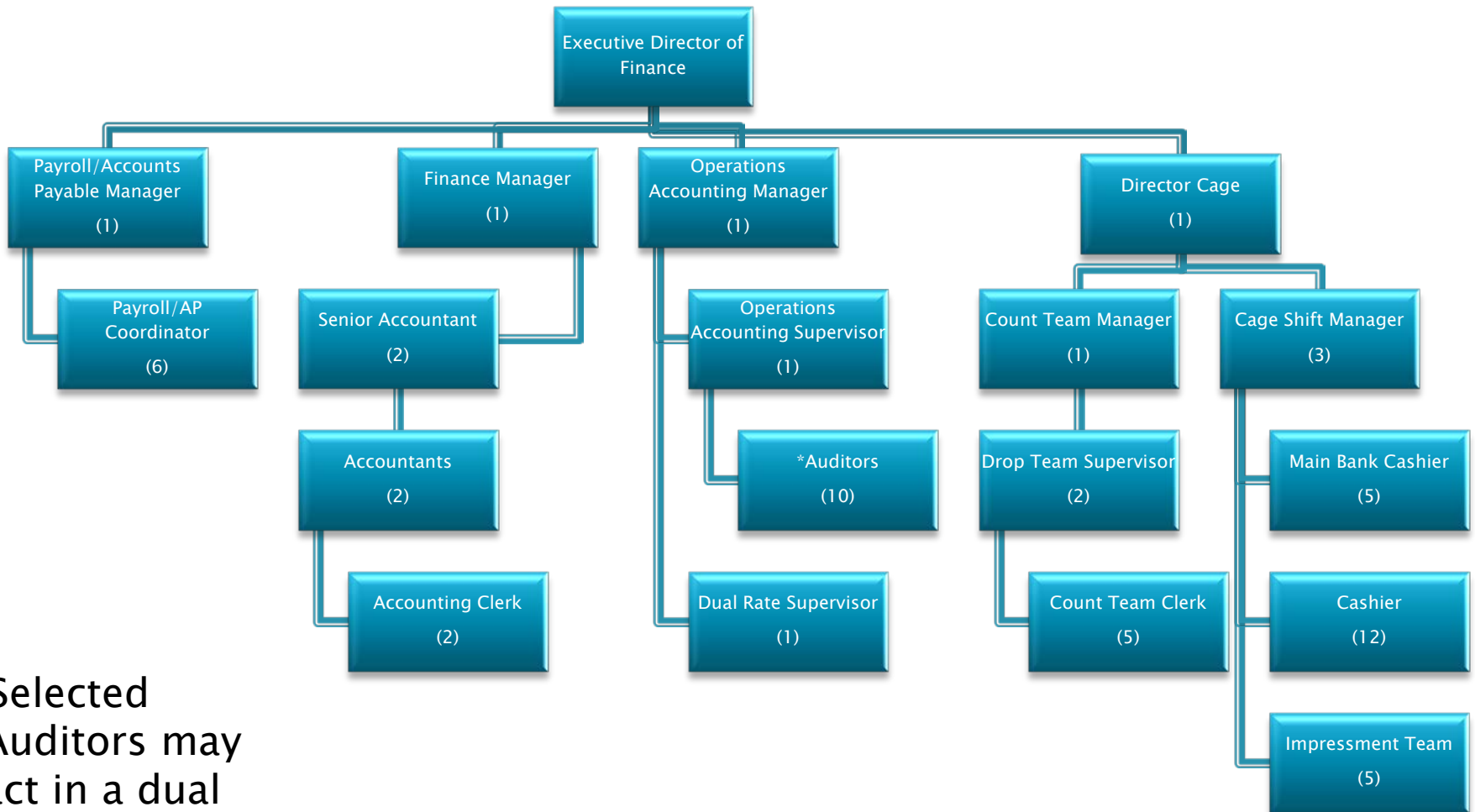
Legend  
(#)= FTE(s)  
K=Key Employee

# Executive VP- CFO



Legend  
(#)= FTE(s)  
K=Key Employee

# Finance



\*Selected Auditors may act in a dual rate capacity

Legend  
 (#) = FTE(s)  
 K = Key Employee

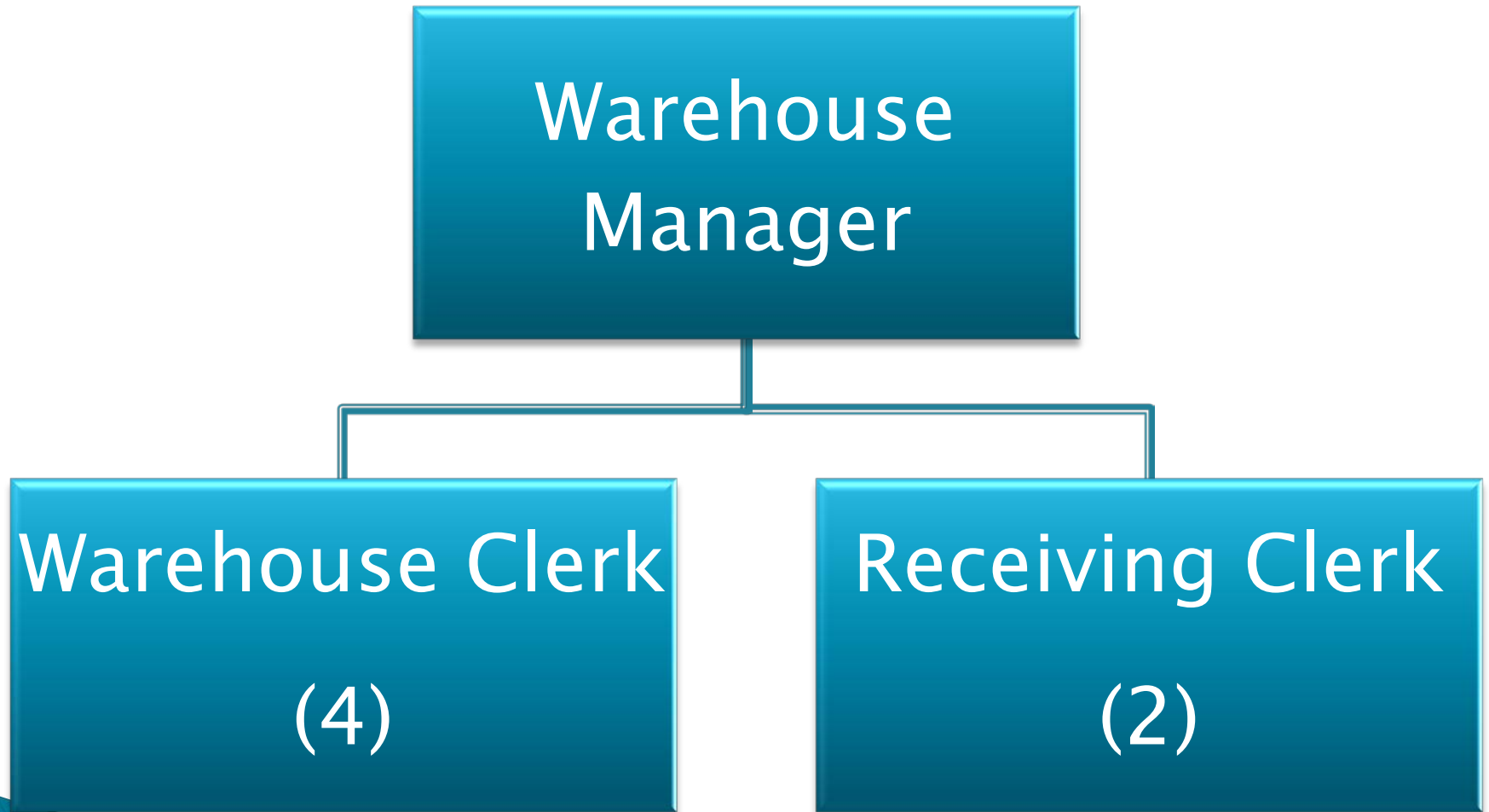


# Purchasing



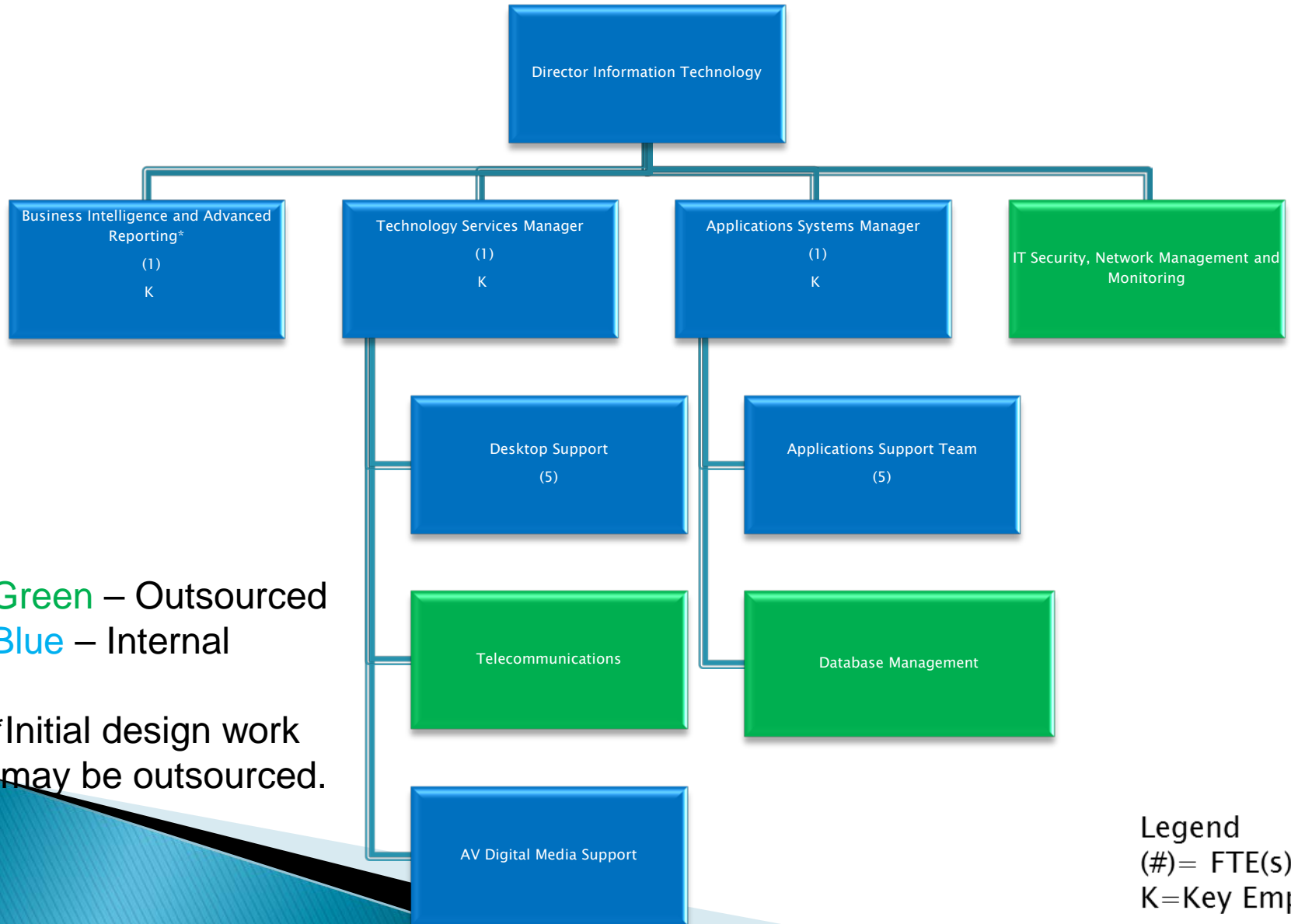
Legend  
(#)= FTE(s)  
K=Key Employee

# Warehouse



Legend  
(#)= FTE(s)  
K=Key Employee

# Information Technology



Green – Outsourced  
Blue – Internal

\*Initial design work may be outsourced.

Legend  
(#)= FTE(s)  
K=Key Employee