

- Unauthorized alteration or addition to a survey map bearing a licensed land surveyor's seal is a violation of Section 7208, Sub-Division 2 of the New York State Education Law.
- The County Route 109 taking note of the county route, it is suggested that the County of Sullivan be consulted for the map determination of highway boundaries.
- The position and utility shown herein are reproduced from actual field locations. Most other features, such as spot corners, ditches and buildings in progress, were taken from photographic drawings compiled by previous surveys and field verified by Contractors Line and Grand South, LLC.
- Refer to Labor 279 page 52. Unpaved utility pole and line operations.
- Refer to Labor 263 page 126, & Labor 120 page 488. Unpaved water main operations.
- Refer to Labor 120 page 488, Labor 162 page 508, & Labor 1704 page 9. Unpaved water main operations.
- Refer to Labor 162 page 448. Unpaved water line right-of-way.
- Refer to Labor 359 page 319 & Labor 158 page 111. Unpaved water main and wetland well operations.
- Refer to Map entitled "County Road No. 109 Sullivan County Easement Map No. E-109-1-A-10" dated February 11, 1953.
- Refer to Map entitled "County Road No. 109 Sullivan County R.O.W. Map No. 109-1-A-9" dated January 28, 1952.
- Refer to Map entitled "County Road No. 109 Sullivan County R.O.W. Map No. 109-1-A-8" dated January 28, 1952.
- Refer to Map entitled "County Road No. 109 Sullivan County R.O.W. Map No. 109-1-A-7" dated January 28, 1952.
- Refer to Map entitled "County Road No. 109 Sullivan County R.O.W. Map No. 109-1-A-6" dated January 28, 1952.
- Refer to Map entitled "County Road No. 109 Sullivan County R.O.W. Map No. 109-1-A-5" dated January 28, 1952.
- Refer to Map entitled "County Road No. 109 Sullivan County R.O.W. Map No. 109-1-A-4" dated January 28, 1952.
- Refer to Map entitled "County Road No. 109 Sullivan County R.O.W. Map No. 109-1-A-3" dated January 28, 1952.
- Refer to Map entitled "County Road No. 109 Sullivan County R.O.W. Map No. 109-1-A-2" dated January 28, 1952.
- Refer to Map entitled "County Road No. 109 Sullivan County R.O.W. Map No. 109-1-A-1" dated January 28, 1952.
- Refer to Labor 359 page 319, 151 Right-of-Way.
- Refer to Labor 359 page 319, 151 Right-of-Way.
- Refer to Labor 1344 page 523, Labor 1218 page 235, & Labor 1955 page 312, 18 Right-of-Way.
- Refer to Labor 624 page 66, 16 Right-of-Way.
- Refer to Labor 474 page 201 & Labor 546 page 278. Unpaved utility pole and the both above and underground operations.
- Refer to Labor 431 page 493. Unpaved easements, right-of-ways, and/or operations that pertain to roadways, sewers, and water pipes.
- Refer to Labor 479 page 185. Unpaved utility easement with rights to run at least 12 feet from the approximate midpoint of Parcel 20 as measured along County Route 109 easterly to Street Road (which is east of the subject parcel), Labor 229 page 48, Labor 341 page 189, Labor 273 page 228, Labor 102 page 124, Labor 688 page 130, Labor 729 page 48, Labor 730 page 48, Labor 731 page 48, Labor 732 page 48, Labor 733 page 48, Labor 734 page 48, Labor 735 page 48, Labor 736 page 48, Labor 737 page 48, Labor 738 page 48, Labor 739 page 48, Labor 740 page 48, Labor 741 page 48, Labor 742 page 48, Labor 743 page 48, Labor 744 page 48, Labor 745 page 48, Labor 746 page 48, Labor 747 page 48, Labor 748 page 48, Labor 749 page 48, Labor 750 page 48, Labor 751 page 48, Labor 752 page 48, Labor 753 page 48, Labor 754 page 48, Labor 755 page 48, Labor 756 page 48, Labor 757 page 48, Labor 758 page 48, Labor 759 page 48, Labor 760 page 48, Labor 761 page 48, Labor 762 page 48, Labor 763 page 48, Labor 764 page 48, Labor 765 page 48, Labor 766 page 48, Labor 767 page 48, Labor 768 page 48, Labor 769 page 48, Labor 770 page 48, Labor 771 page 48, Labor 772 page 48, Labor 773 page 48, Labor 774 page 48, Labor 775 page 48, Labor 776 page 48, Labor 777 page 48, Labor 778 page 48, Labor 779 page 48, Labor 780 page 48, Labor 781 page 48, Labor 782 page 48, Labor 783 page 48, Labor 784 page 48, Labor 785 page 48, Labor 786 page 48, Labor 787 page 48, Labor 788 page 48, Labor 789 page 48, Labor 790 page 48, Labor 791 page 48, Labor 792 page 48, Labor 793 page 48, Labor 794 page 48, Labor 795 page 48, Labor 796 page 48, Labor 797 page 48, Labor 798 page 48, Labor 799 page 48, Labor 800 page 48.

28. The location, extent and area of underground utilities are not guaranteed or certified as complete or accurate. Consult with the appropriate utility companies for current utility maps and records.

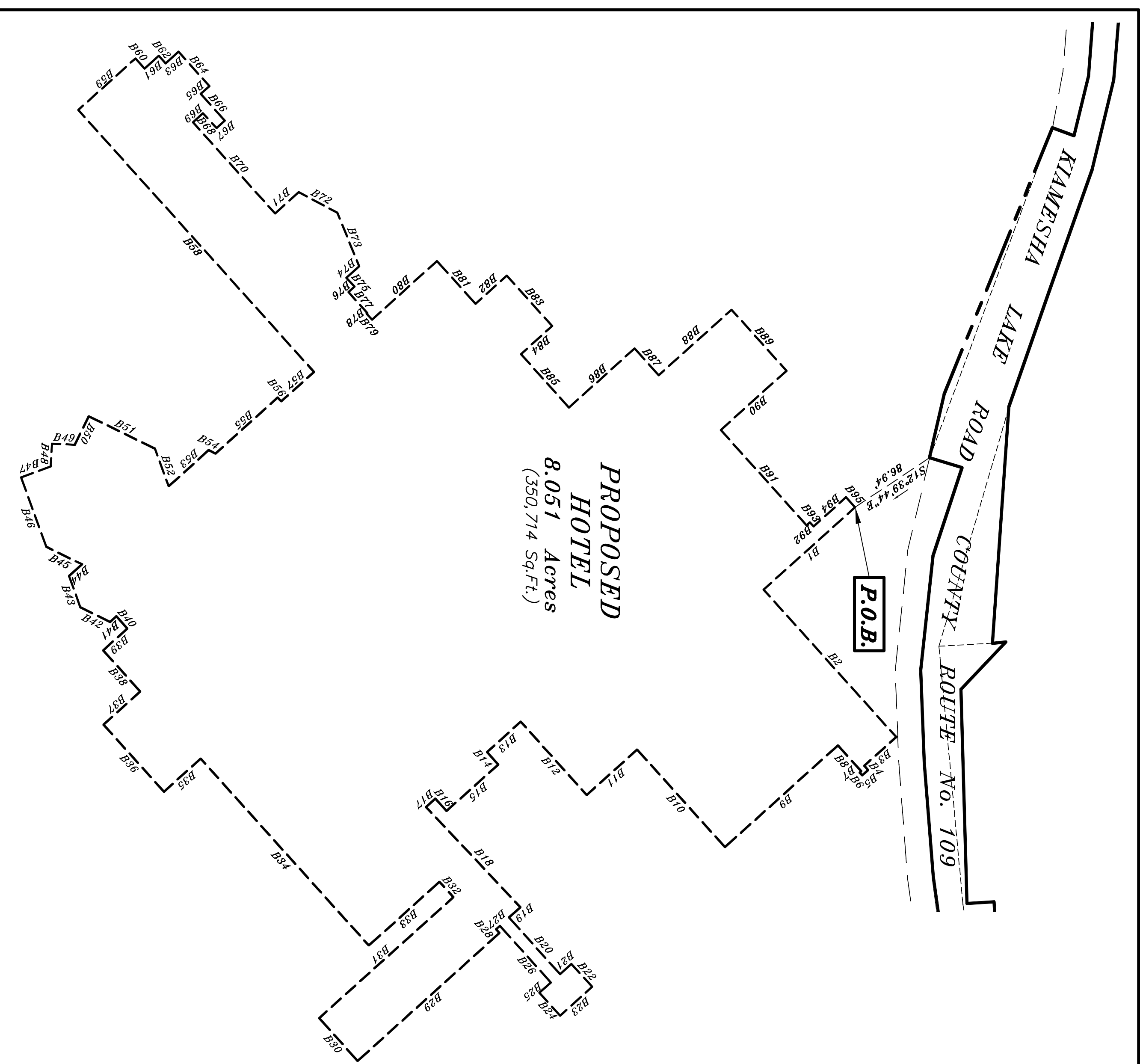
29. The location, extent and area of underground utilities are not guaranteed or certified as complete or accurate. Consult with the appropriate utility companies for current utility maps and records.

30. The location, extent and area of underground utilities are not guaranteed or certified as complete or accurate. Consult with the appropriate utility companies for current utility maps and records.

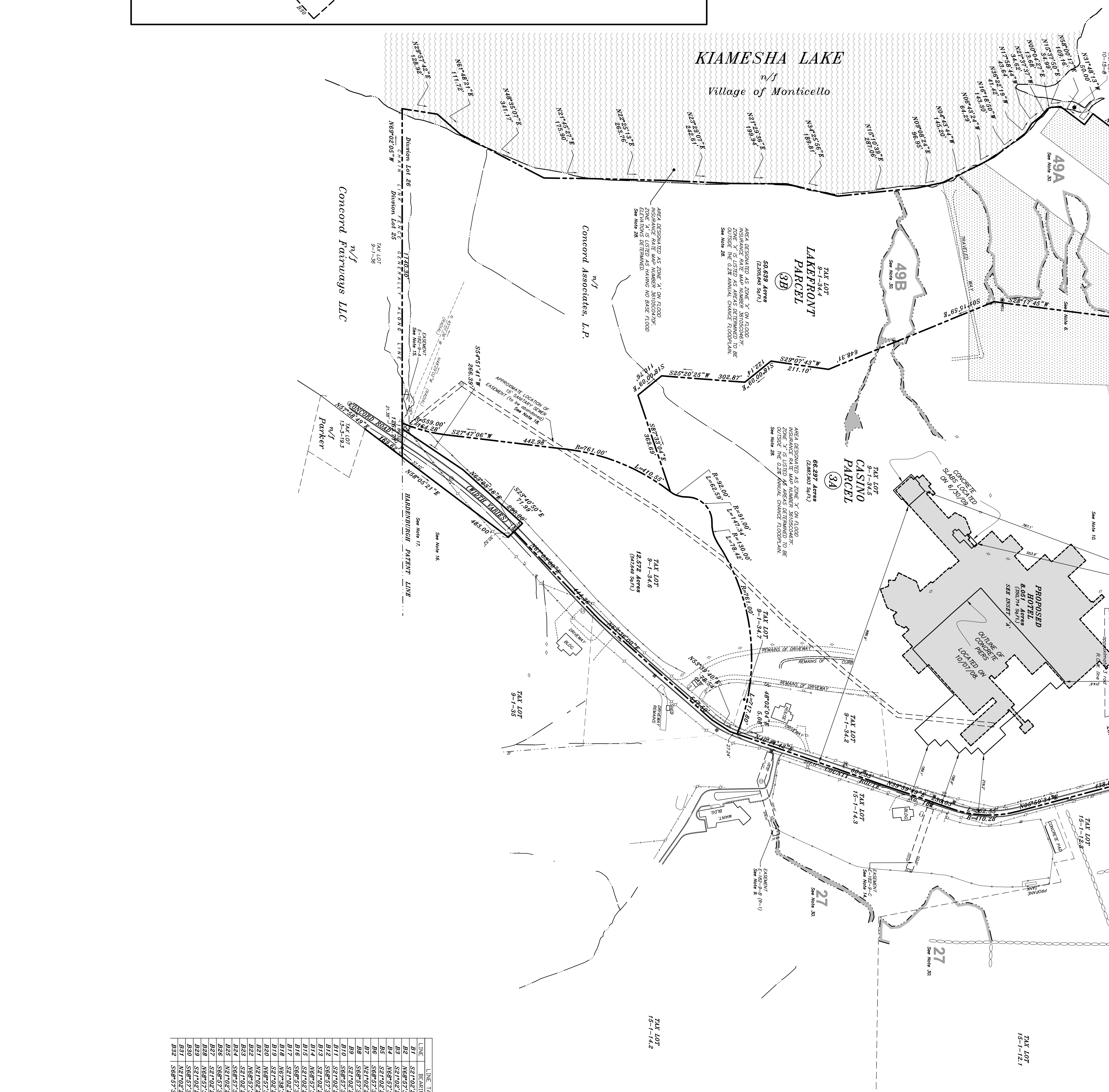
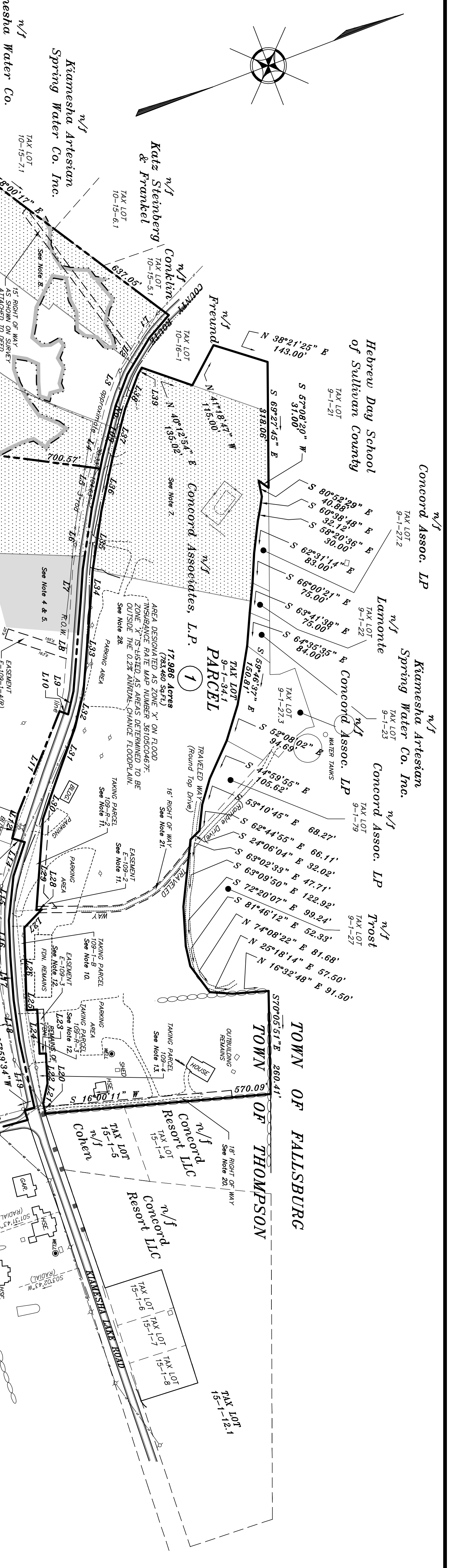
31. There are no front, rear or side yard setback requirements.

32. The property has direct physical access to County Route 109 (Kiamasha Lake Road) and County Route 182 (Concord Road), both dedicated public streets or highways.

33. Only copies of this survey map marked with both the surveyor's original seal and signature shall be considered as valid true copies.



**CONTRACTORS' LINE & GRAND SOUTH LLC**  
 23 Nepperton Avenue  
 Elmford, New York 12523  
 Phone: (914) 347-3141 Fax: (914) 347-3120  
 OHC@neandg.com



LINE	BEARING	LENGTH	LINE	BEARING	LENGTH
B1	S 89°52'38"E	7.82	B19	S 21°02'52"W	11.86
B2	S 89°52'38"E	7.82	B20	S 21°02'52"W	11.86
B3	S 89°52'38"E	7.82	B21	S 21°02'52"W	11.86
B4	S 89°52'38"E	7.82	B22	S 21°02'52"W	11.86
B5	S 89°52'38"E	7.82	B23	S 21°02'52"W	11.86
B6	S 89°52'38"E	7.82	B24	S 21°02'52"W	11.86
B7	S 89°52'38"E	7.82	B25	S 21°02'52"W	11.86
B8	S 89°52'38"E	7.82	B26	S 21°02'52"W	11.86
B9	S 89°52'38"E	7.82	B27	S 21°02'52"W	11.86
B10	S 89°52'38"E	7.82	B28	S 21°02'52"W	11.86
B11	S 89°52'38"E	7.82	B29	S 21°02'52"W	11.86
B12	S 89°52'38"E	7.82	B30	S 21°02'52"W	11.86
B13	S 89°52'38"E	7.82	B31	S 21°02'52"W	11.86
B14	S 89°52'38"E	7.82	B32	S 21°02'52"W	11.86
B15	S 89°52'38"E	7.82	B33	S 21°02'52"W	11.86
B16	S 89°52'38"E	7.82	B34	S 21°02'52"W	11.86
B17	S 89°52'38"E	7.82	B35	S 21°02'52"W	11.86
B18	S 89°52'38"E	7.82	B36	S 21°02'52"W	11.86
B19	S 89°52'38"E	7.82	B37	S 21°02'52"W	11.86
B20	S 89°52'38"E	7.82	B38	S 21°02'52"W	11.86
B21	S 89°52'38"E	7.82	B39	S 21°02'52"W	11.86
B22	S 89°52'38"E	7.82	B40	S 21°02'52"W	11.86
B23	S 89°52'38"E	7.82	B41	S 21°02'52"W	11.86
B24	S 89°52'38"E	7.82	B42	S 21°02'52"W	11.86
B25	S 89°52'38"E	7.82	B43	S 21°02'52"W	11.86
B26	S 89°52'38"E	7.82	B44	S 21°02'52"W	11.86
B27	S 89°52'38"E	7.82	B45	S 21°02'52"W	11.86
B28	S 89°52'38"E	7.82	B46	S 21°02'52"W	11.86
B29	S 89°52'38"E	7.82	B47	S 21°02'52"W	11.86
B30	S 89°52'38"E	7.82	B48	S 21°02'52"W	11.86
B31	S 89°52'38"E	7.82	B49	S 21°02'52"W	11.86
B32	S 89°52'38"E	7.82	B50	S 21°02'52"W	11.86
B33	S 89°52'38"E	7.82	B51	S 21°02'52"W	11.86
B34	S 89°52'38"E	7.82	B52	S 21°02'52"W	11.86
B35	S 89°52'38"E	7.82	B53	S 21°02'52"W	11.86
B36	S 89°52'38"E	7.82	B54	S 21°02'52"W	11.86
B37	S 89°52'38"E	7.82	B55	S 21°02'52"W	11.86
B38	S 89°52'38"E	7.82	B56	S 21°02'52"W	11.86
B39	S 89°52'38"E	7.82	B57	S 21°02'52"W	11.86
B40	S 89°52'38"E	7.82	B58	S 21°02'52"W	11.86
B41	S 89°52'38"E	7.82	B59	S 21°02'52"W	11.86
B42	S 89°52'38"E	7.82	B60	S 21°02'52"W	11.86
B43	S 89°52'38"E	7.82	B61	S 21°02'52"W	11.86
B44	S 89°52'38"E	7.82	B62	S 21°02'52"W	11.86
B45	S 89°52'38"E	7.82	B63	S 21°02'52"W	11.86
B46	S 89°52'38"E	7.82	B64	S 21°02'52"W	11.86
B47	S 89°52'38"E	7.82	B65	S 21°02'52"W	11.86
B48	S 89°52'38"E	7.82	B66	S 21°02'52"W	11.86
B49	S 89°52'38"E	7.82	B67	S 21°02'52"W	11.86
B50	S 89°52'38"E	7.82	B68	S 21°02'52"W	11.86
B51	S 89°52'38"E	7.82	B69	S 21°02'52"W	11.86
B52	S 89°52'38"E	7.82	B70	S 21°02'52"W	11.86
B53	S 89°52'38"E	7.82	B71	S 21°02'52"W	11.86
B54	S 89°52'38"E	7.82	B72	S 21°02'52"W	11.86
B55	S 89°52'38"E	7.82	B73	S 21°02'52"W	11.86
B56	S 89°52'38"E	7.82	B74	S 21°02'52"W	11.86
B57	S 89°52'38"E	7.82	B75	S 21°02'52"W	11.86
B58	S 89°52'38"E	7.82	B76	S 21°02'52"W	11.86
B59	S 89°52'38"E	7.82	B77	S 21°02'52"W	11.86
B60	S 89°52'38"E	7.82	B78	S 21°02'52"W	11.86
B61	S 89°52'38"E	7.82	B79	S 21°02'52"W	11.86
B62	S 89°52'38"E	7.82	B80	S 21°02'52"W	11.86
B63	S 89°52'38"E	7.82	B81	S 21°02'52"W	11.86
B64	S 89°52'38"E	7.82	B82	S 21°02'52"W	11.86
B65	S 89°52'38"E	7.82	B83	S 21°02'52"W	11.86
B66	S 89°52'38"E	7.82	B84	S 21°02'52"W	11.86
B67	S 89°52'38"E	7.82	B85	S 21°02'52"W	11.86
B68	S 89°52'38"E	7.82	B86	S 21°02'52"W	11.86
B69	S 89°52'38"E	7.82	B87	S 21°02'52"W	11.86
B70	S 89°52'38"E	7.82	B88	S 21°02'52"W	11.86
B71	S 89°52'38"E	7.82	B89	S 21°02'52"W	11.86
B72	S 89°52'38"E	7.82	B90	S 21°02'52"W	11.86
B73	S 89°52'38"E	7.82	B91	S 21°02'52"W	11.86
B74	S 89°52'38"E	7.82	B92	S 21°02'52"W	11.86
B75	S 89°52'38"E	7.82	B93	S 21°02'52"W	11.86
B76	S 89°52'38"E	7.82	B94	S 21°02'52"W	11.86
B77	S 89°52'38"E	7.82	B95	S 21°02'52"W	11.86
B78	S 89°52'38"E	7.82	B96	S 21°02'52"W	11.86
B79	S 89°52'38"E	7.82	B97	S 21°02'52"W	11.86
B80	S 89°52'38"E	7.82	B98	S 21°02'52"W	11.86
B81	S 89°52'38"E	7.82	B99	S 21°02'52"W	11.86
B82	S 89°52'38"E	7.82	B100	S 21°02'52"W	11.86

**CONCORD KIAMESHA LLC**  
 PROPERTY SITUATE IN THE  
**TOWN OF THOMPSON**  
**COUNTY OF SULLIVAN**  
**STATE OF NEW YORK**  
 SURVEY OF PROPERTY  
 PREPARED FOR  
**CONCORD KIAMESHA LLC**