

## Exhibit VIII.D.1.a – Proposed Internal Controls

---

*Submit as Exhibit VIII.D.1.a a full description of the proposed internal controls, electronic surveillance systems, and security systems for the proposed Gaming Facility and any related facilities, including, for example, any contemplated internal audits, independent external audits, separation of accounting and cage processes for independent verifications, cage and count room supervision, gaming floor drop processes, and other asset preservation and secure cash handling systems and processes. Where third-parties are to be engaged (e.g., external audit and law enforcement/safety entities), so indicate. Indicate how these efforts will achieve risk management/control goals at the enterprise/Licensee level as well as regulatory, law enforcement, and other local, regional, State, and Federal levels as applicable.*

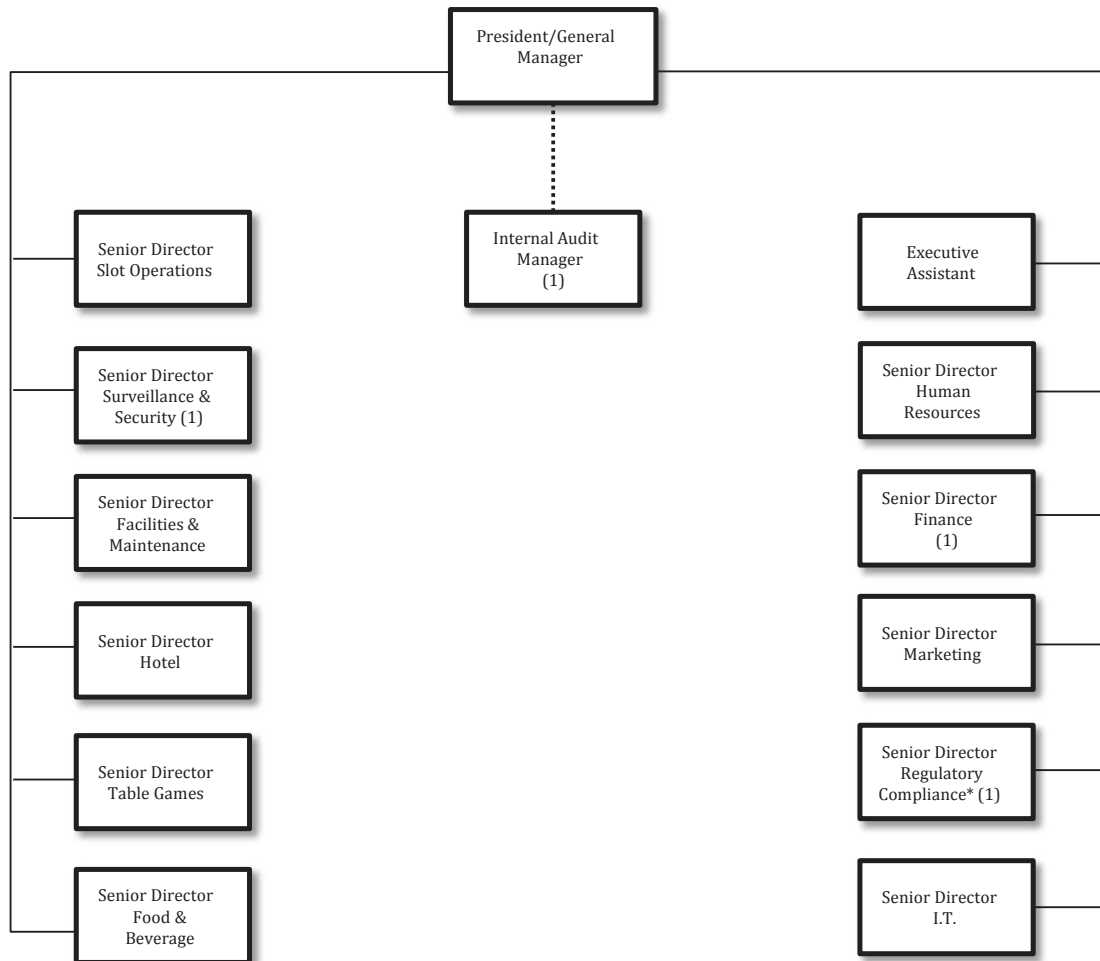
CONFIDENTIAL



## Exhibit VIII.D.1.b – Proposed Internal Controls

Submit as Exhibit VIII.D.1.b. a projected table of organization for the entire project. For compliance, accounting, audit (both financial and internal control), security, and surveillance show additional detail that includes staffing levels and identifies the critical departments of detailed organization charts for each control/risk management related activity (e.g., positions in compliance, accounting, cage, cashiering, count room(s), credit issuance, credit collection, asset management, and income control), data processing, internal audit, compliance and security, and surveillance. Show staffing levels for each position. If risk management/control is vested in other departments, functions or activities, identify them and describe their role. Indicate which staff position(s) would be responsible for communications with the Commission.

### Capital View Casino & Resort Administration



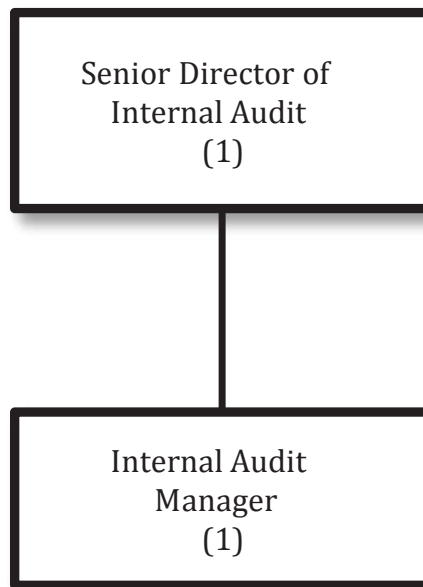
\* Responsible for communications with the New York State Gaming Commission

## Exhibit VIII.D.1.a – Proposed Internal Controls

---

Submit as Exhibit VIII.D.1.b. a projected table of organization for the entire project. For compliance, accounting, audit (both financial and internal control), security, and surveillance show additional detail that includes staffing levels and identifies the critical departments of detailed organization charts for each control/risk management related activity (e.g., positions in compliance, accounting, cage, cashiering, count room(s), credit issuance, credit collection, asset management, and income control), data processing, internal audit, compliance and security, and surveillance. Show staffing levels for each position. If risk management/control is vested in other departments, functions or activities, identify them and describe their role. Indicate which staff position(s) would be responsible for communications with the Commission

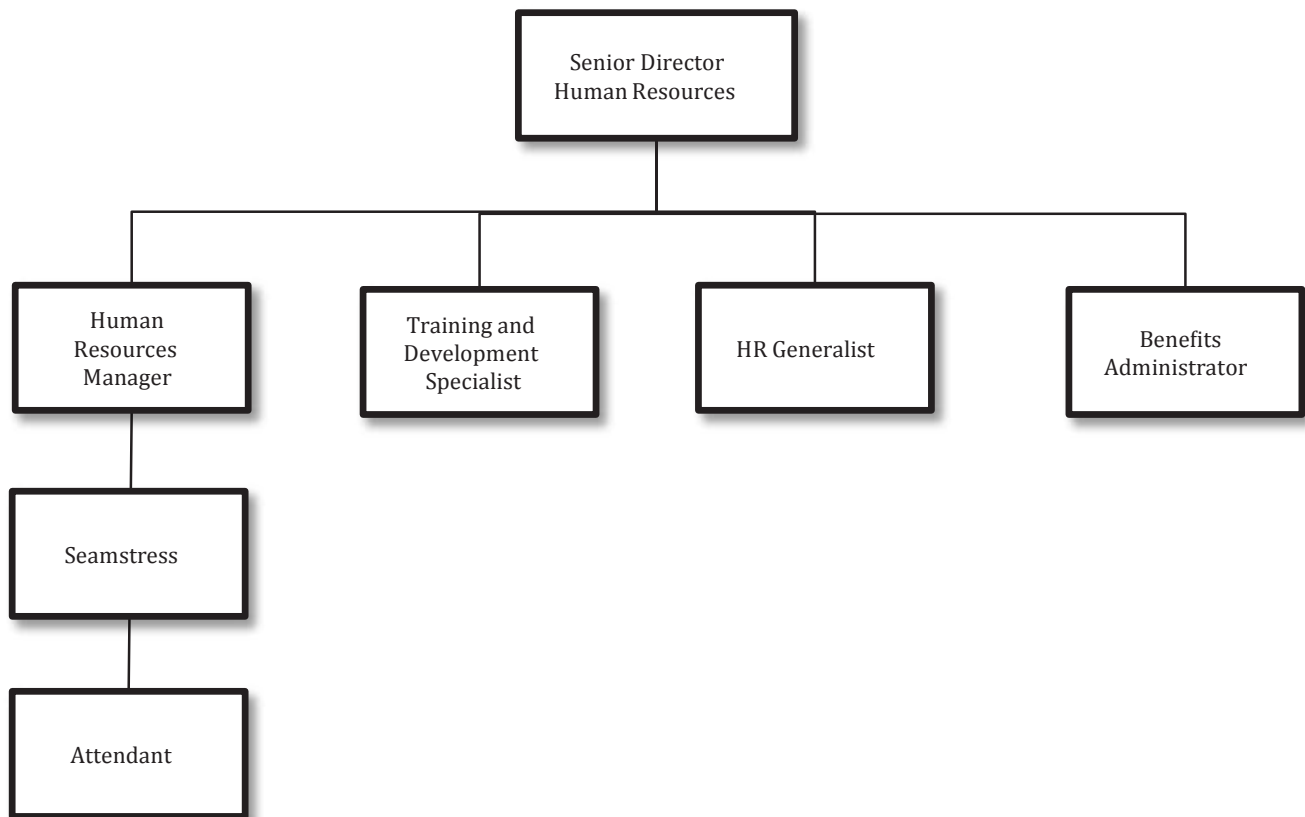
# Capital View Casino & Resort Internal Audit



## Exhibit VIII.D.1.b – Proposed Internal Controls

Submit as Exhibit VIII.D.1.b. a projected table of organization for the entire project. For compliance, accounting, audit (both financial and internal control), security, and surveillance show additional detail that includes staffing levels and identifies the critical departments of detailed organization charts for each control/risk management related activity (e.g., positions in compliance, accounting, cage, cashiering, count room(s), credit issuance, credit collection, asset management, and income control), data processing, internal audit, compliance and security, and surveillance. Show staffing levels for each position. If risk management/control is vested in other departments, functions or activities, identify them and describe their role. Indicate which staff position(s) would be responsible for communications with the Commission.

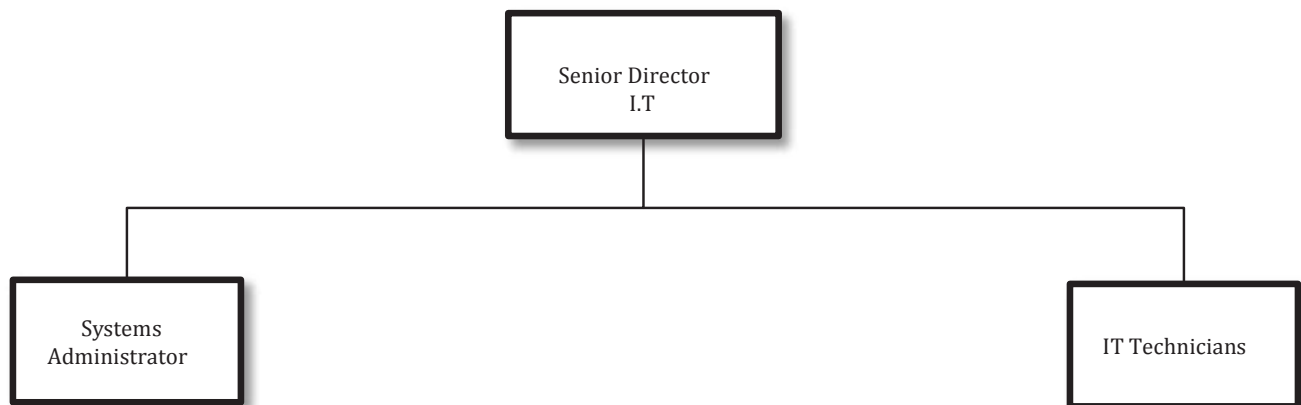
# Capital View Casino & Resort Human Resources



## Exhibit VIII.D.1.b – Proposed Internal Controls

Submit as Exhibit VIII.D.1.b. a projected table of organization for the entire project. For compliance, accounting, audit (both financial and internal control), security, and surveillance show additional detail that includes staffing levels and identifies the critical departments of detailed organization charts for each control/risk management related activity (e.g., positions in compliance, accounting, cage, cashiering, count room(s), credit issuance, credit collection, asset management, and income control), data processing, internal audit, compliance and security, and surveillance. Show staffing levels for each position. If risk management/control is vested in other departments, functions or activities, identify them and describe their role. Indicate which staff position(s) would be responsible for communications with the Commission.

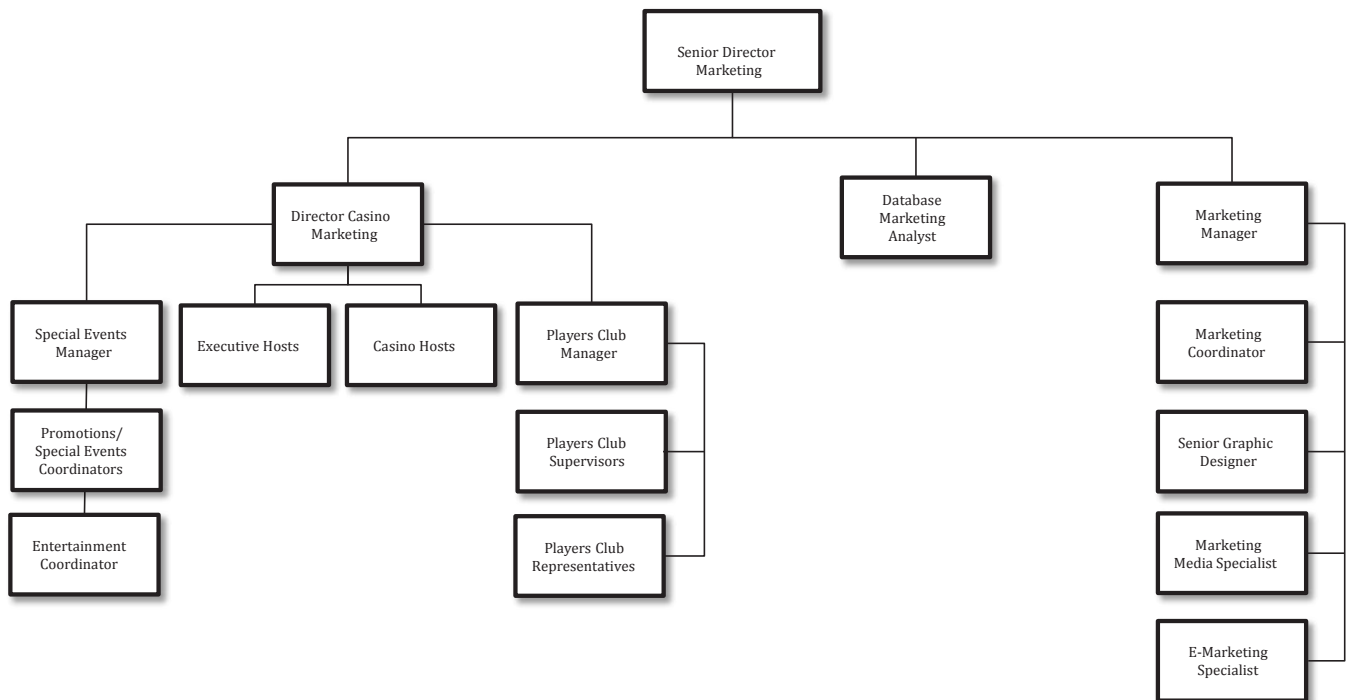
# Capital View Casino & Resort Information Technology



## Exhibit VIII.D.1.b – Proposed Internal Controls

Submit as Exhibit VIII.D.1.b. a projected table of organization for the entire project. For compliance, accounting, audit (both financial and internal control), security, and surveillance show additional detail that includes staffing levels and identifies the critical departments of detailed organization charts for each control/risk management related activity (e.g., positions in compliance, accounting, cage, cashiering, count room(s), credit issuance, credit collection, asset management, and income control), data processing, internal audit, compliance and security, and surveillance. Show staffing levels for each position. If risk management/control is vested in other departments, functions or activities, identify them and describe their role. Indicate which staff position(s) would be responsible for communications with the Commission.

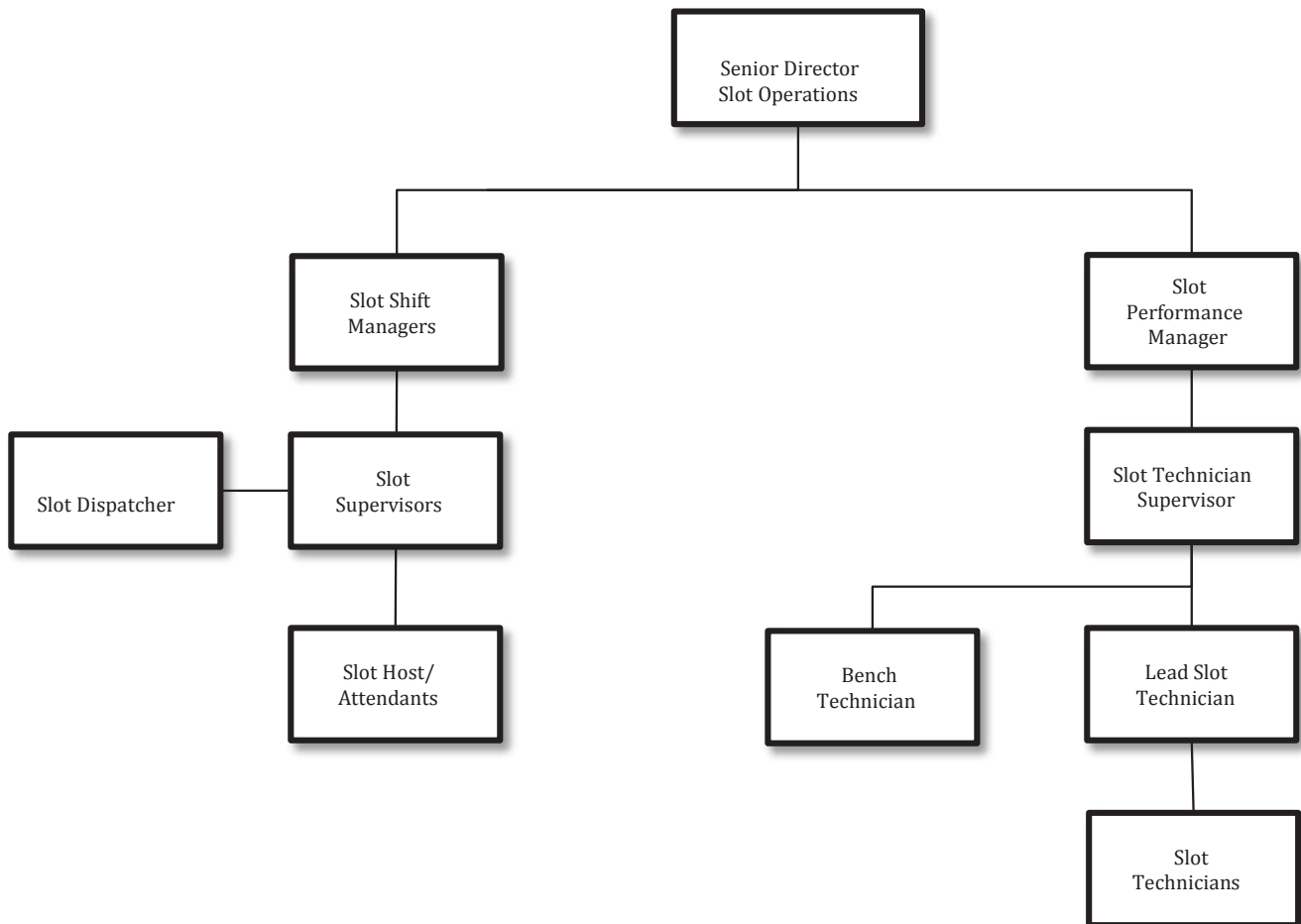
### Capital View Casino & Resort Marketing



## Exhibit VIII.D.1.b – Proposed Internal Controls

Submit as Exhibit VIII.D.1.b. a projected table of organization for the entire project. For compliance, accounting, audit (both financial and internal control), security, and surveillance show additional detail that includes staffing levels and identifies the critical departments of detailed organization charts for each control/risk management related activity (e.g., positions in compliance, accounting, cage, cashiering, count room(s), credit issuance, credit collection, asset management, and income control), data processing, internal audit, compliance and security, and surveillance. Show staffing levels for each position. If risk management/control is vested in other departments, functions or activities, identify them and describe their role. Indicate which staff position(s) would be responsible for communications with the Commission.

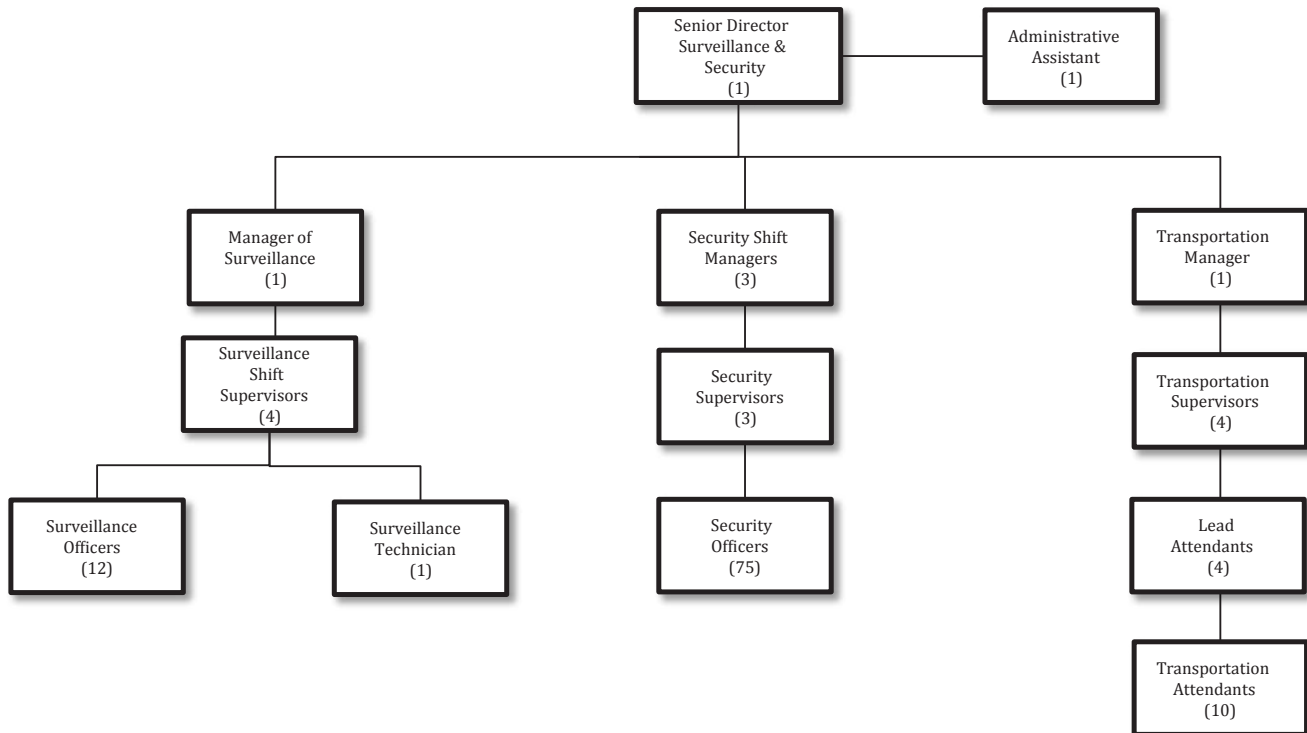
### Capital View Casino & Resort Slot Operations



## Exhibit VIII.D.1.b – Proposed Internal Controls

Submit as Exhibit VIII.D.1.b. a projected table of organization for the entire project. For compliance, accounting, audit (both financial and internal control), security, and surveillance show additional detail that includes staffing levels and identifies the critical departments of detailed organization charts for each control/risk management related activity (e.g., positions in compliance, accounting, cage, cashiering, count room(s), credit issuance, credit collection, asset management, and income control), data processing, internal audit, compliance and security, and surveillance. Show staffing levels for each position. If risk management/control is vested in other departments, functions or activities, identify them and describe their role. Indicate which staff position(s) would be responsible for communications with the Commission.

### Capital View Casino & Resort Security & Surveillance

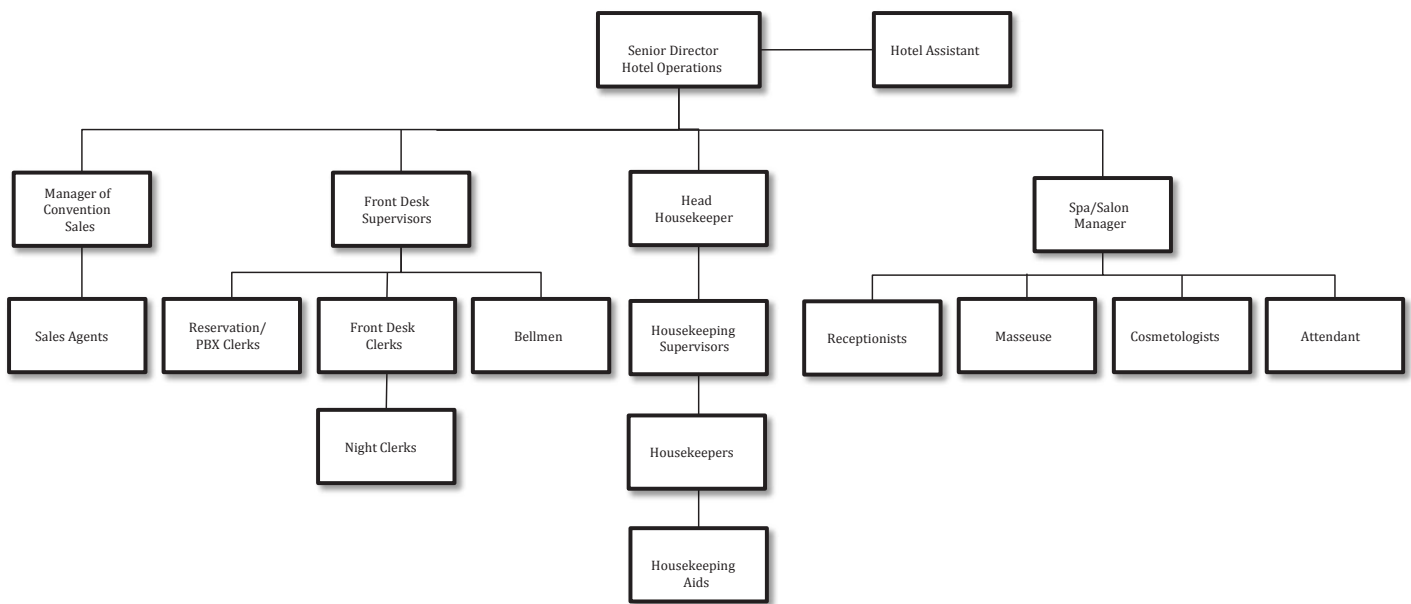




## Exhibit VIII.D.1.b – Proposed Internal Controls

Submit as Exhibit VIII.D.1.b. a projected table of organization for the entire project. For compliance, accounting, audit (both financial and internal control), security, and surveillance show additional detail that includes staffing levels and identifies the critical departments of detailed organization charts for each control/risk management related activity (e.g., positions in compliance, accounting, cage, cashiering, count room(s), credit issuance, credit collection, asset management, and income control), data processing, internal audit, compliance and security, and surveillance. Show staffing levels for each position. If risk management/control is vested in other departments, functions or activities, identify them and describe their role. Indicate which staff position(s) would be responsible for communications with the Commission.

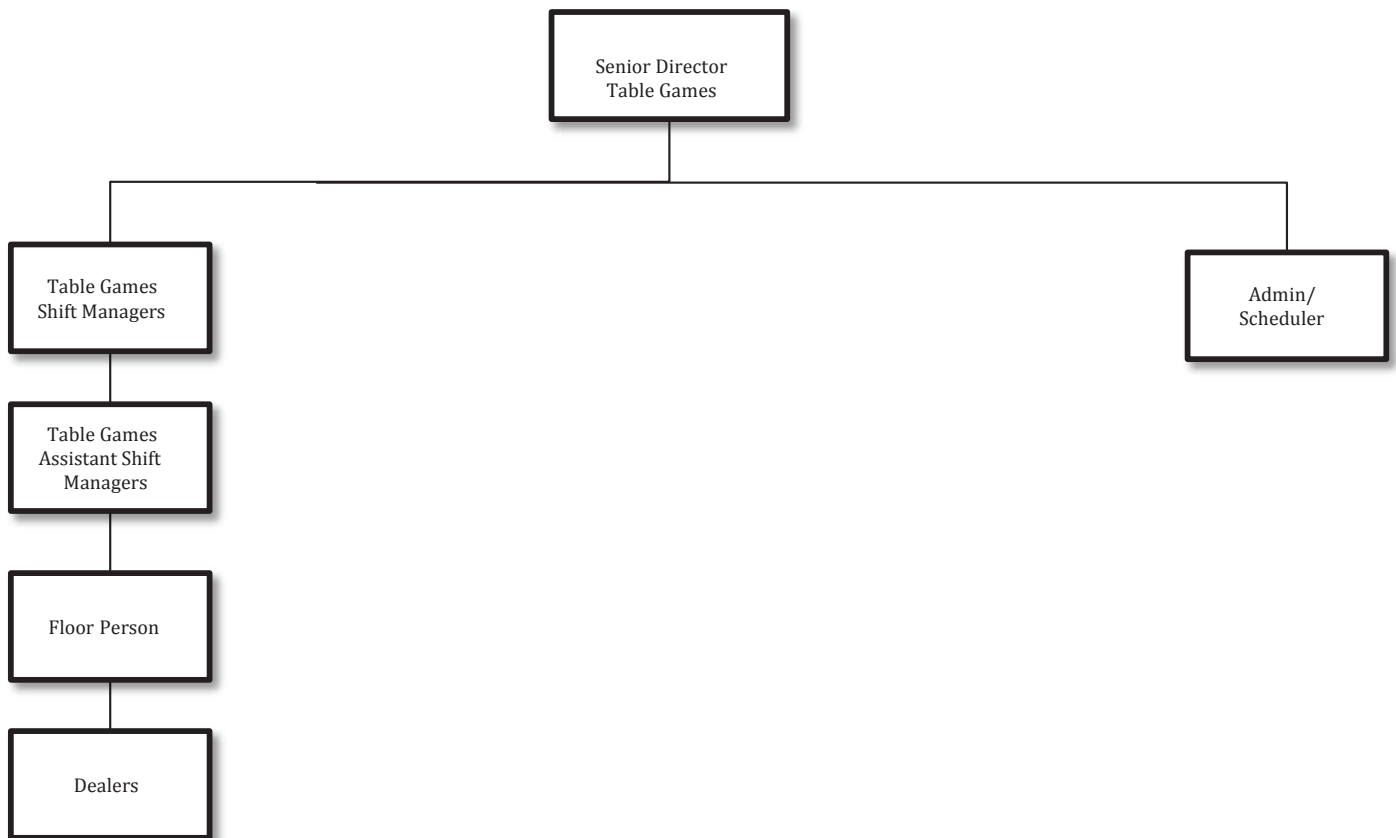
### Capital View Casino & Resort Hotel Operations



## Exhibit VIII.D.1.b – Proposed Internal Controls

Submit as Exhibit VIII.D.1.b. a projected table of organization for the entire project. For compliance, accounting, audit (both financial and internal control), security, and surveillance show additional detail that includes staffing levels and identifies the critical departments of detailed organization charts for each control/risk management related activity (e.g., positions in compliance, accounting, cage, cashiering, count room(s), credit issuance, credit collection, asset management, and income control), data processing, internal audit, compliance and security, and surveillance. Show staffing levels for each position. If risk management/control is vested in other departments, functions or activities, identify them and describe their role. Indicate which staff position(s) would be responsible for communications with the Commission.

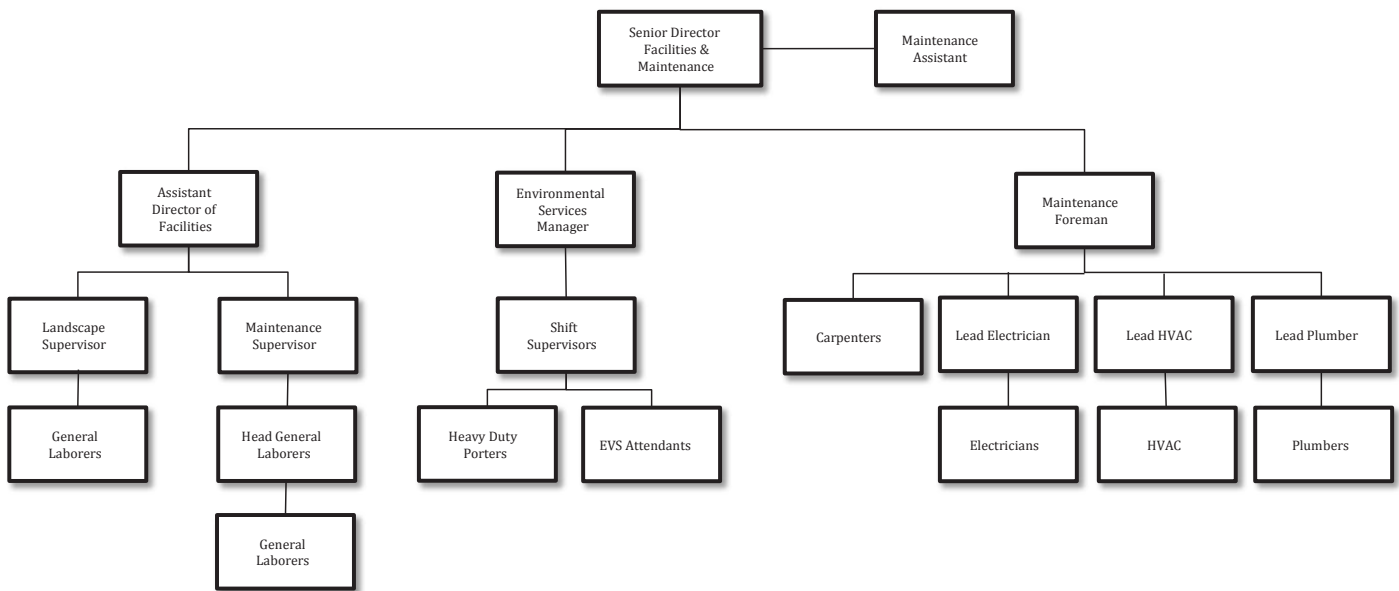
### Capital View Casino & Resort Table Games



## Exhibit VIII.D.1.b – Proposed Internal Controls

Submit as Exhibit VIII.D.1.b. a projected table of organization for the entire project. For compliance, accounting, audit (both financial and internal control), security, and surveillance show additional detail that includes staffing levels and identifies the critical departments of detailed organization charts for each control/risk management related activity (e.g., positions in compliance, accounting, cage, cashiering, count room(s), credit issuance, credit collection, asset management, and income control), data processing, internal audit, compliance and security, and surveillance. Show staffing levels for each position. If risk management/control is vested in other departments, functions or activities, identify them and describe their role. Indicate which staff position(s) would be responsible for communications with the Commission.

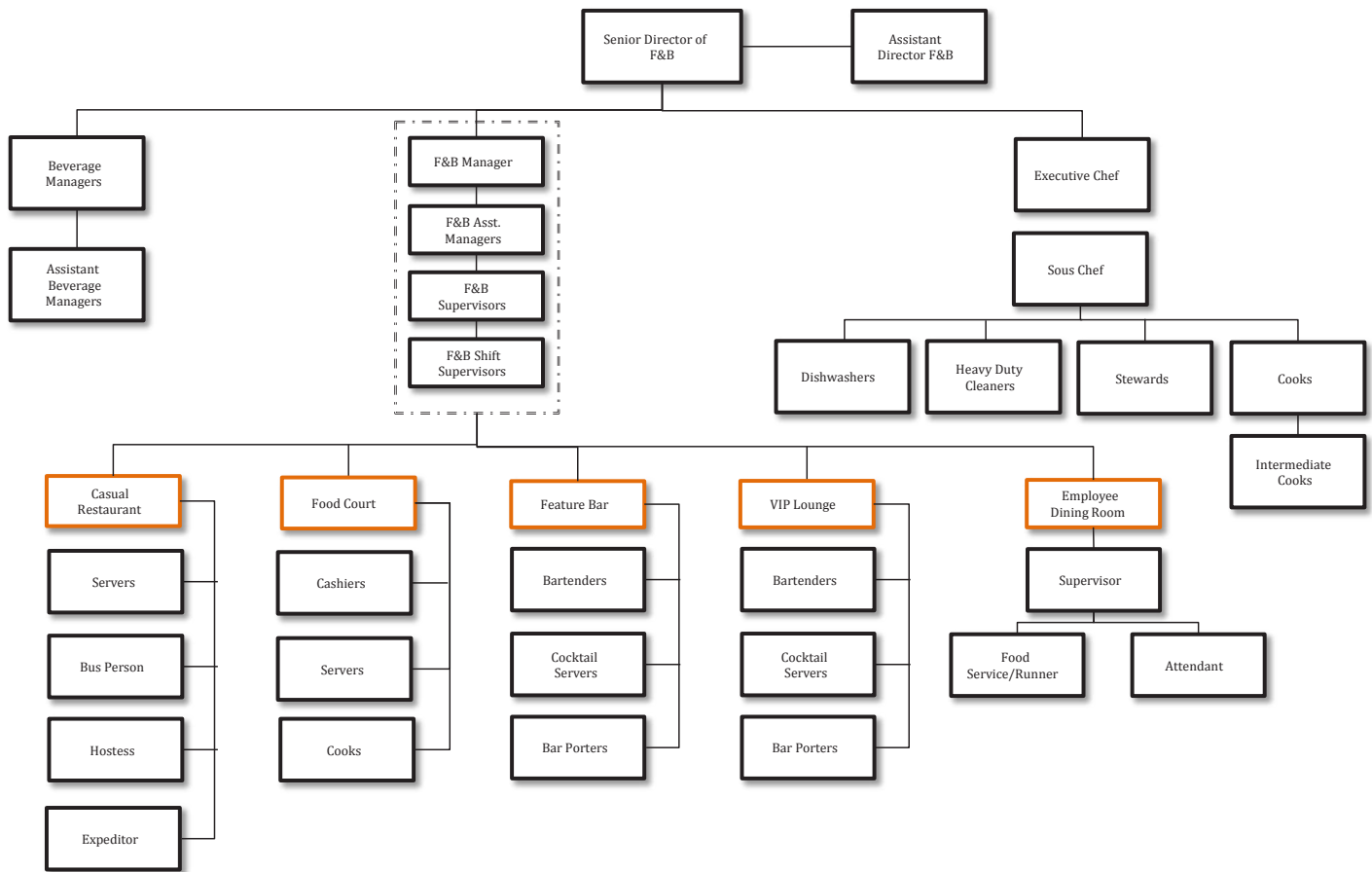
### Capital View Casino & Resort Facilities & Maintenance



## Exhibit VIII.D.1.b – Proposed Internal Controls

Submit as Exhibit VIII.D.1.b. a projected table of organization for the entire project. For compliance, accounting, audit (both financial and internal control), security, and surveillance show additional detail that includes staffing levels and identifies the critical departments of detailed organization charts for each control/risk management related activity (e.g., positions in compliance, accounting, cage, cashiering, count room(s), credit issuance, credit collection, asset management, and income control), data processing, internal audit, compliance and security, and surveillance. Show staffing levels for each position. If risk management/control is vested in other departments, functions or activities, identify them and describe their role. Indicate which staff position(s) would be responsible for communications with the Commission.

### Capital View Casino & Resort Food & Beverage (“F&B”)



## Exhibit VIII.D.1.b – Proposed Internal Controls

Submit as Exhibit VIII.D.1.b. a projected table of organization for the entire project. For compliance, accounting, audit (both financial and internal control), security, and surveillance show additional detail that includes staffing levels and identifies the critical departments of detailed organization charts for each control/risk management related activity (e.g., positions in compliance, accounting, cage, cashiering, count room(s), credit issuance, credit collection, asset management, and income control), data processing, internal audit, compliance and security, and surveillance. Show staffing levels for each position. If risk management/control is vested in other departments, functions or activities, identify them and describe their role. Indicate which staff position(s) would be responsible for communications with the Commission.

### Capital View Casino & Resort Finance

