



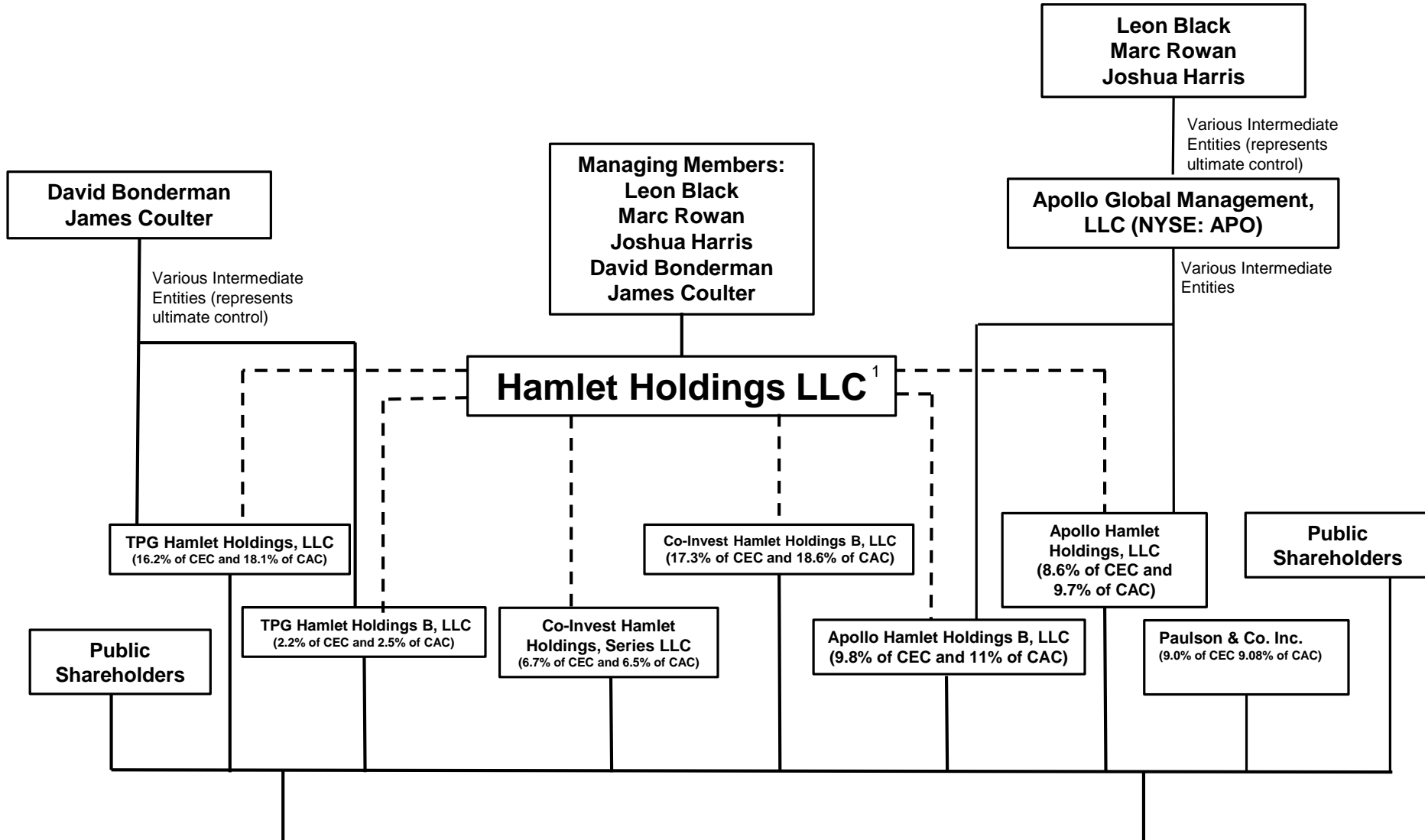
## Table of Ownership

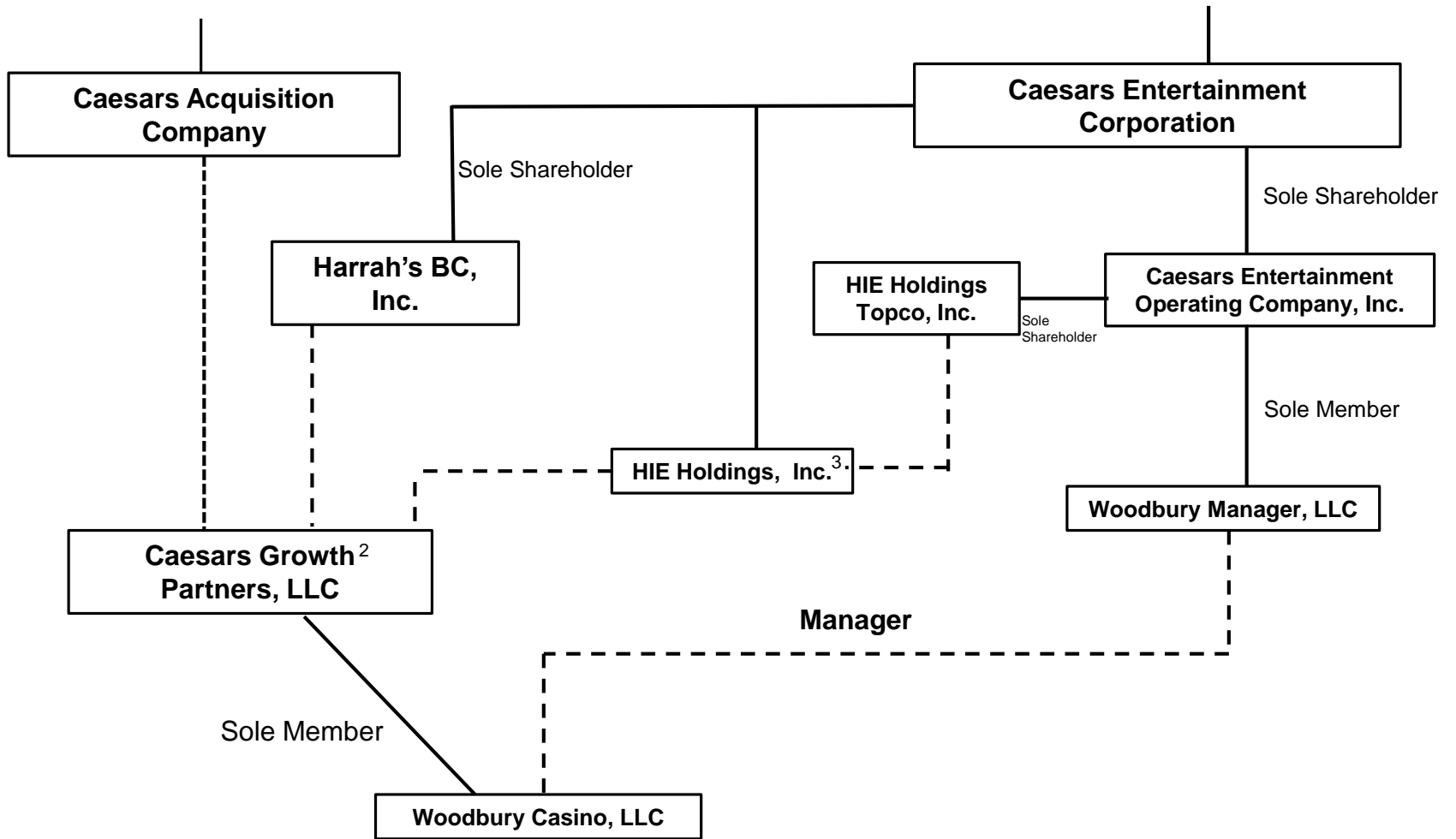
Please see the table of ownership attached as VI.E\_A1.

**Attachment VI.E\_A1**

# RFA Exhibit VI.E – Applicant Control Chart

## 6/30/2014





**Note 1:** Entities with a dotted line leading to Hamlet Holdings LLC have granted Hamlet Holdings LLC an irrevocable proxy to control the vote of their common stock.

Hamlet Holdings LLC currently controls 63.9% of the vote in CEC and 66.3% of the vote in CAC.

**Note 2:** Economic Interest of CGP: Caesars Acquisition Company 42.4%, Harrah's BC, Inc. 34.4%, HIE Holdings, Inc. 23.2%

Harrah's BC, Inc. holds 59.7% of non-voting units and HIE Holdings, Inc. holds 40.3% of the non-voting units of CGP  
CAC holds 100% of the voting units of CGP

**Note 3:** CEC owns 100% of the common stock and 37.5% of the preferred stock of HIE Holdings, Inc.

**Note 3 cont'd:** HIE Holdings Topco, Inc. owns 62.5% of the preferred stock of HIE Holdings, Inc.